

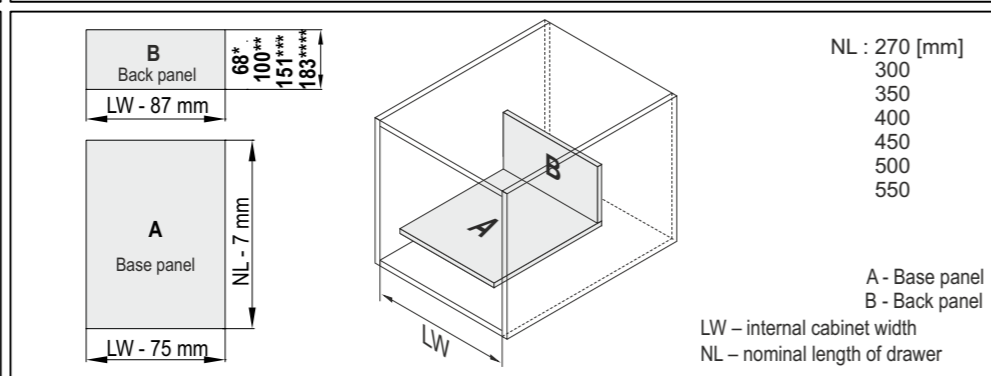
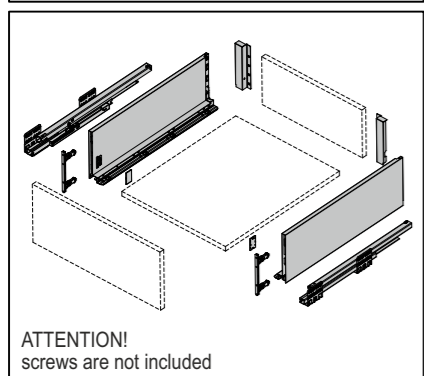
Height 84* / 116** / 167*** / 199**** mm

Sevrollbox Slim drawer system – assembly instructions

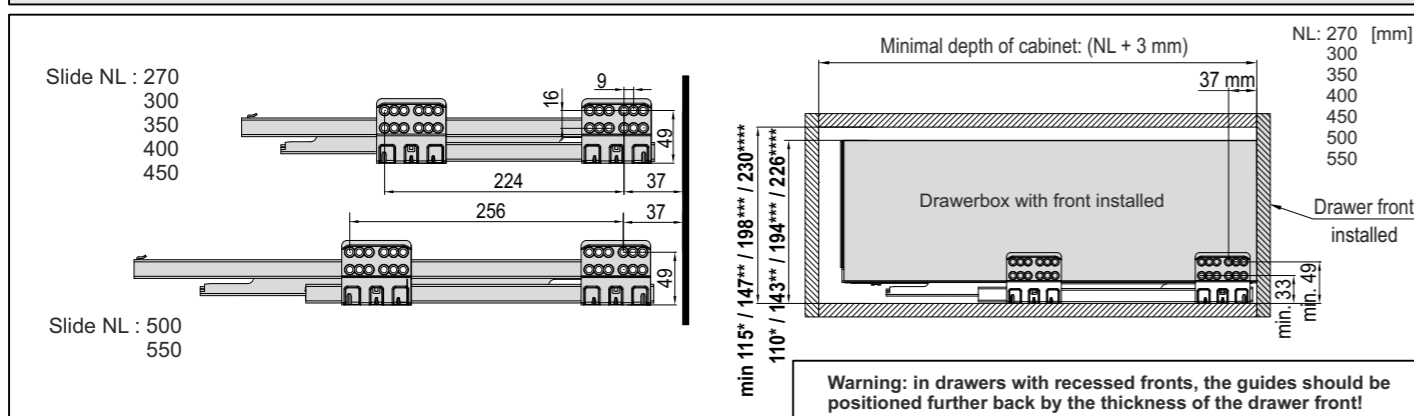


ATTENTION: * dimensions for drawers 84 mm / ** dimensions for drawers 116 mm / *** dimensions for drawers 167 mm / **** dimensions for drawers 199 mm

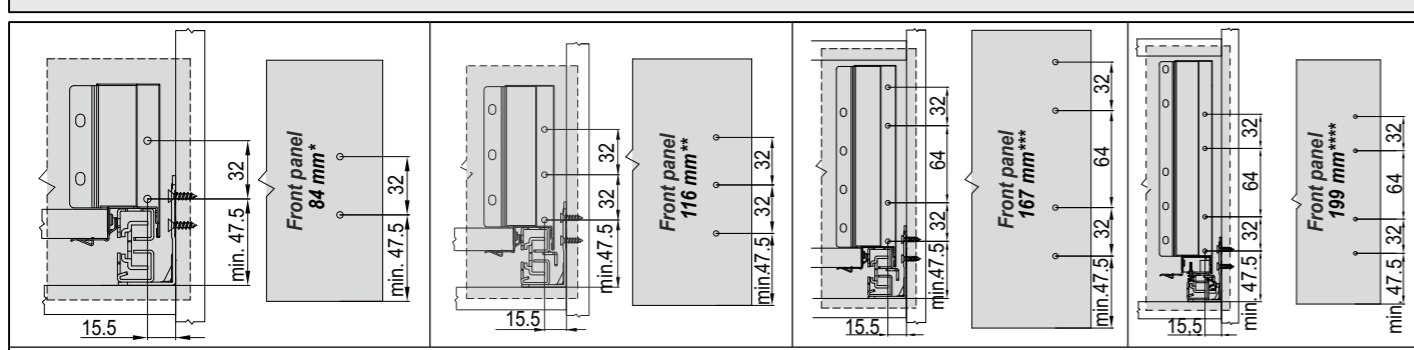
Components Cutting dimensions of 16 mm MDF Drawer assembly



Drawer runner positioning and required space between drawers

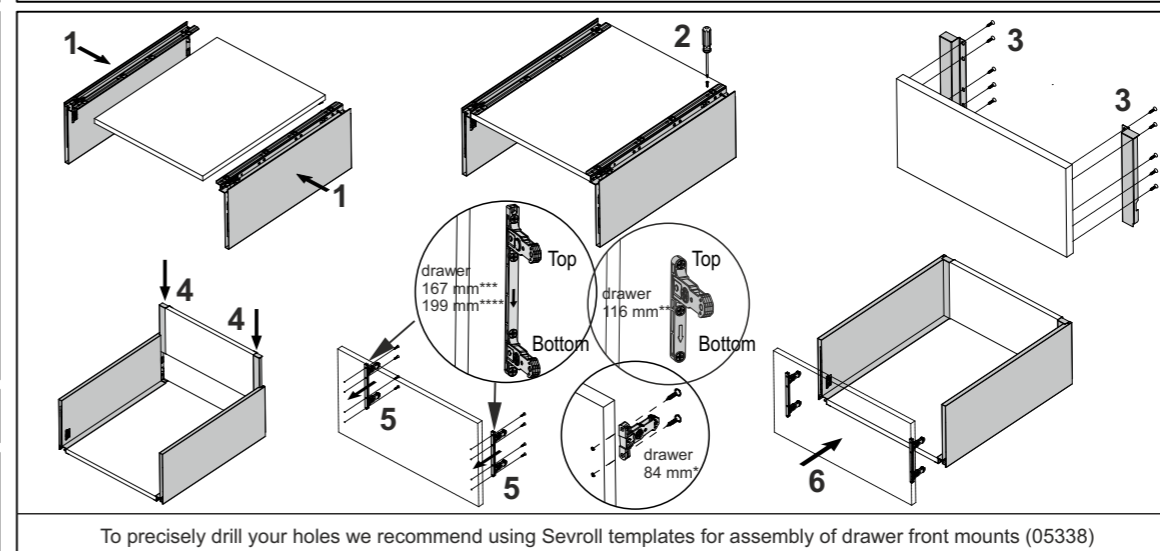
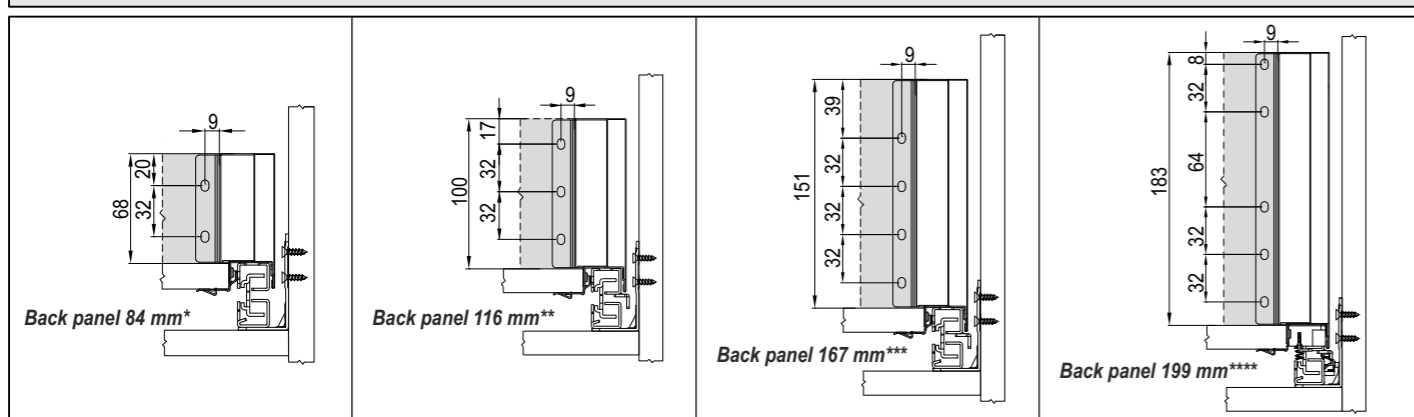


Mounting dimensions for drawer front panel



To precisely drill your holes we recommend using Sevroll templates: for assembly of drawer front mounts (05338) / for assembly of drawer guides (05337)

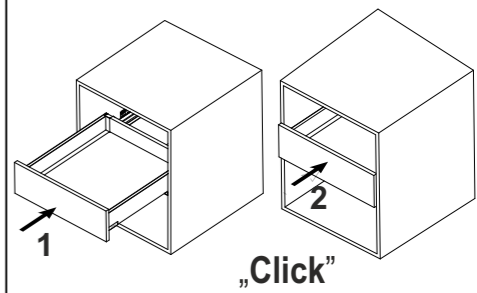
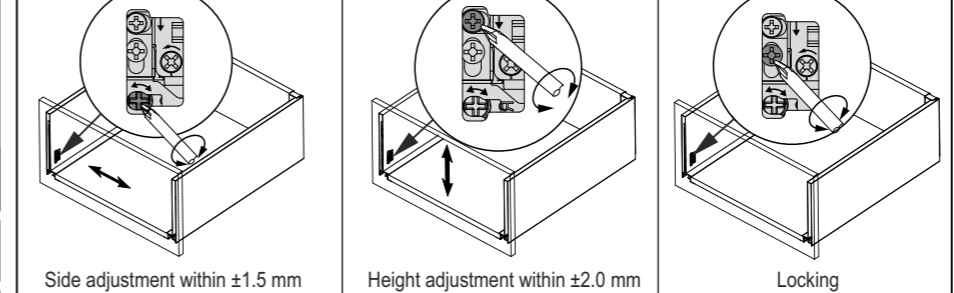
Mounting dimensions of back panel



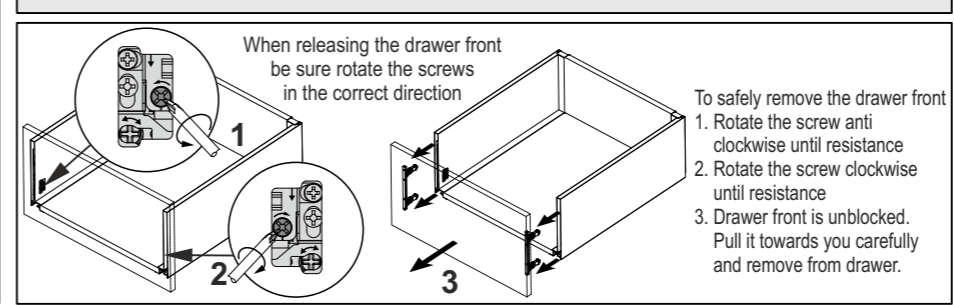
If you find the drawer base panel is loose when fitted to the drawer sides, you can pack the fixing points with washers

To precisely drill your holes we recommend using Sevroll templates for assembly of drawer front mounts (05338)

Drawer front regulation Drawer insertion



Drawer front panel removal



Additionally: For ease of assembly (especially with full overlay fronts) you can withdraw the slides. Hold in the highlighted position and use the release catches.

Click

Drawer removal Drawer strengthening

