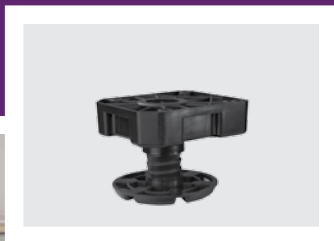


FURNITURE FEET



Adjustable furniture feet for heavy loads:

- Easy height regulation with wide scope
- Heavy load capability, up to 450 kg, spread on a wide foot
- Made of a resistant material that does not damage the floor

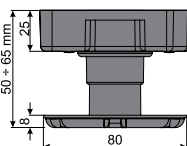


Adjustable furniture feet for heavy loads



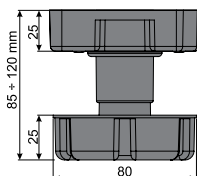
Adjustable furniture feet h 50-65 mm

Index	Load	Colour	Material
222934-SV	450 kg	Black	Plastic



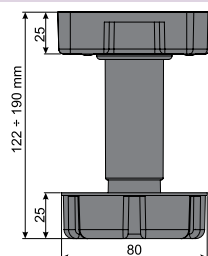
Adjustable furniture feet h 85-120 mm

Index	Load	Colour	Material
222935-SV	450 kg	Black	Plastic



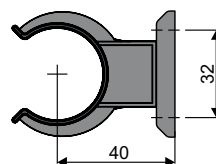
Adjustable furniture feet h 122-190 mm

Index	Load	Colour	Material
222936-SV	450 kg	Black	Plastic

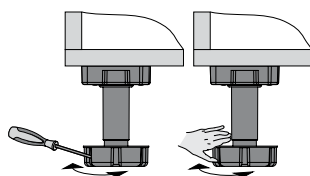


Universal plinth II clip

Index	Load	Colour	Material
222938	-	Black	Plastic



Foot height regulation



Adjusting with screwdriver
from front

Manual adjusting