

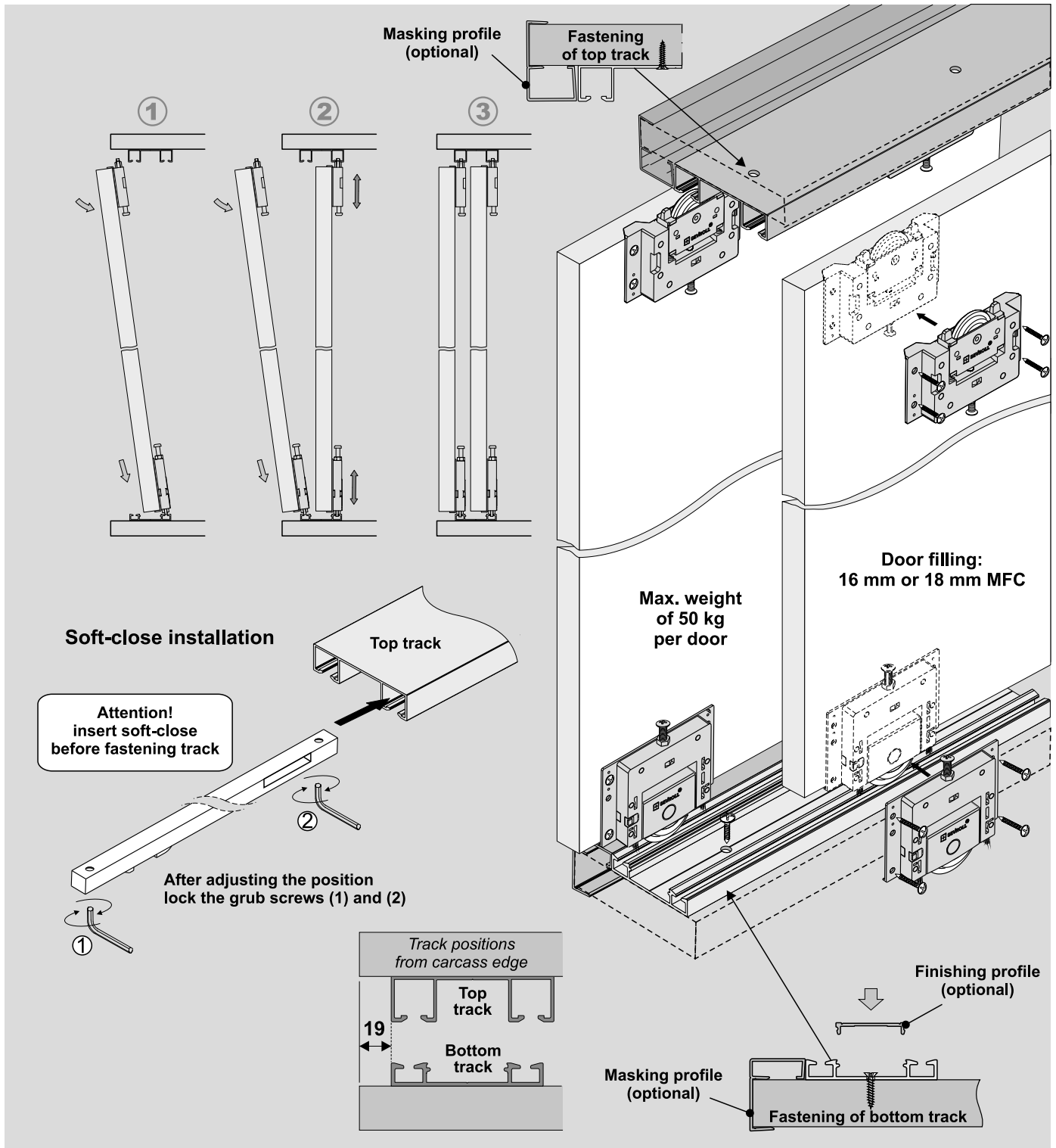


SYSTEM

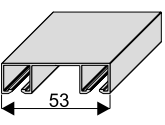
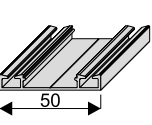
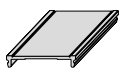
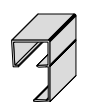
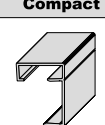
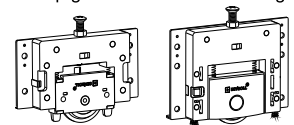
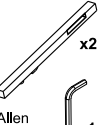
# COMPACT

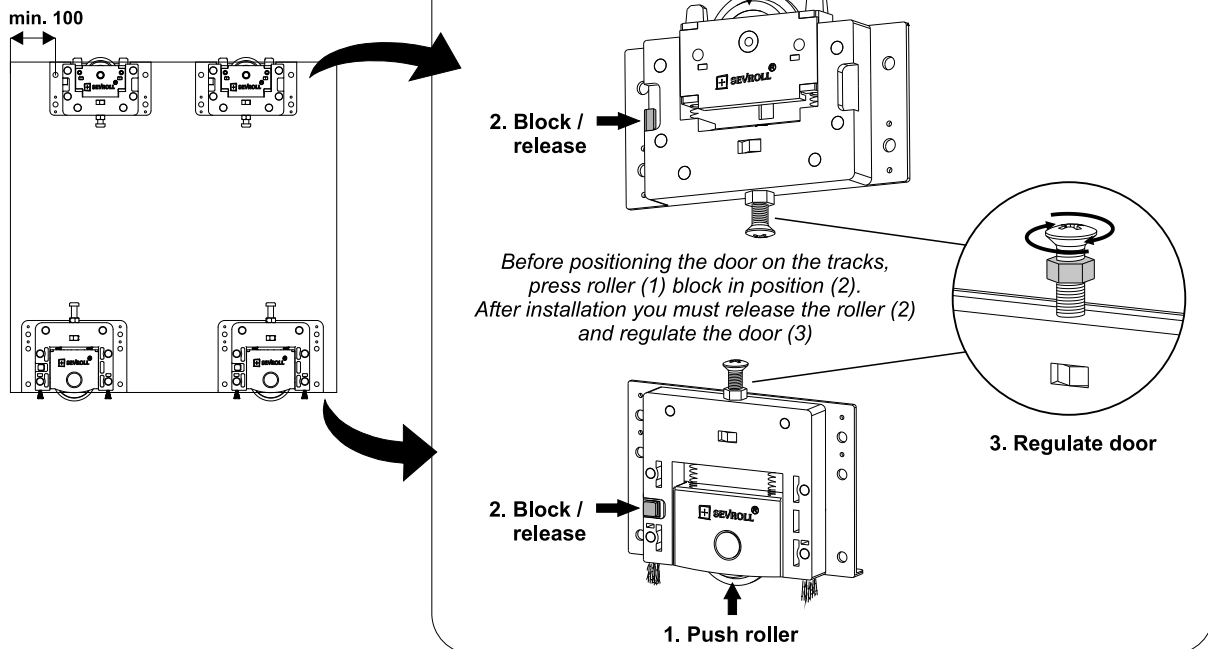
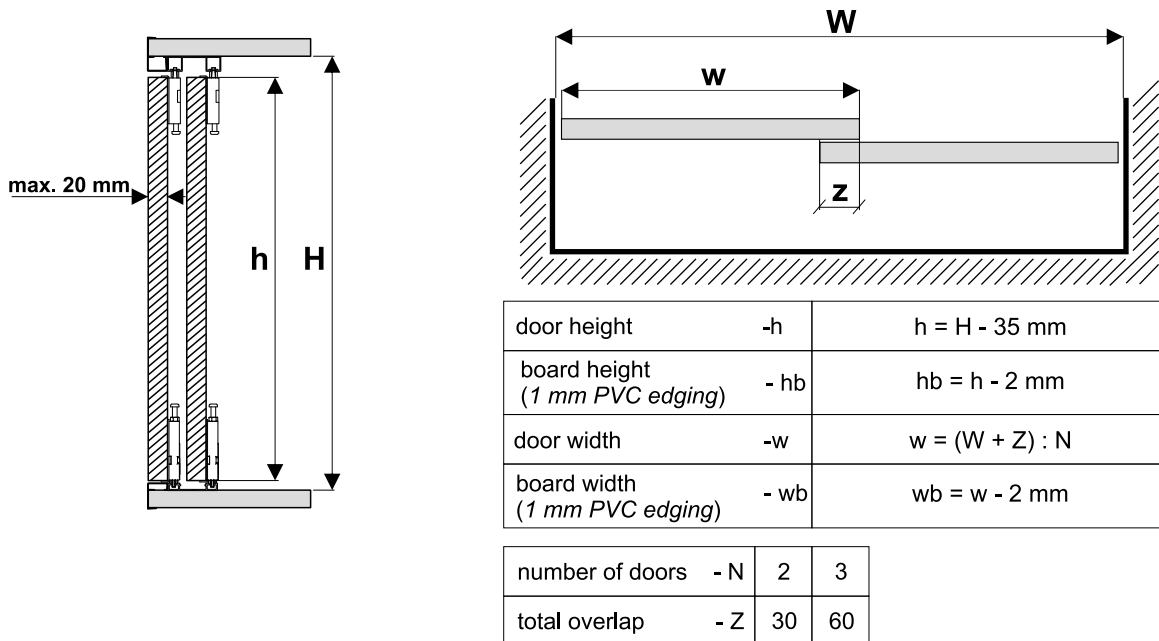


# SEVROLL®

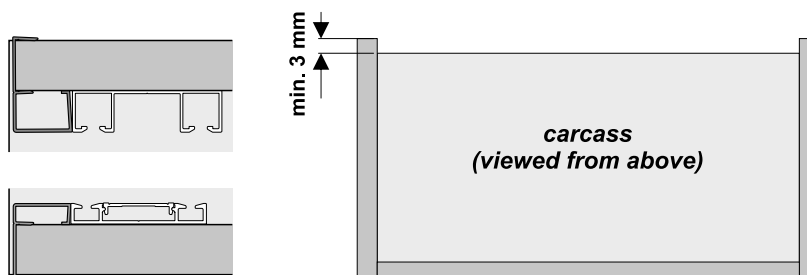


## COMPONENTS

<p><b>Top track Compact</b></p>  <p>53</p>	<p><b>Bottom track Compact II</b></p>  <p>50</p>	<p><b>Finishing profile for bottom track Elegant II</b></p> 	<p><b>Top track masking profile Compact</b></p> 	<p><b>Bottom track masking profile Compact</b></p> 	<p><b>Set Compact (1 door)</b></p> <p>Top guide</p> <p>Bottom carriage</p>  <p>∅ 4x14 x 16</p> <p>x2 x2</p>	<p><b>Soft-close Compact</b></p>  <p>x2 Allen key 2 mm x1</p>
---	---	---	---	--	---	--

**1. Door installation****Dimensions of opening**

**Warning!** When using masking profiles carcass sides should protrude a min. of 3 mm



**ATTENTION!** Remove protective film from aluminium elements (handles, tracks, connectors, etc.) prior to cutting them to the desired size. Film removal will reveal quality issues (eg. scratches)