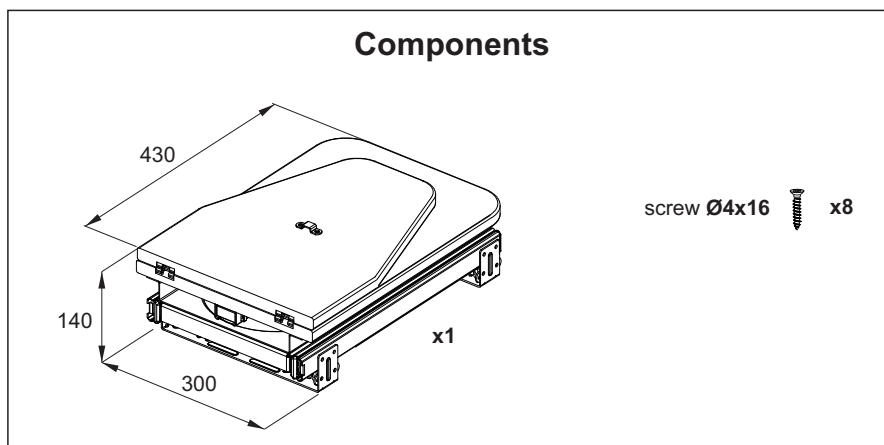
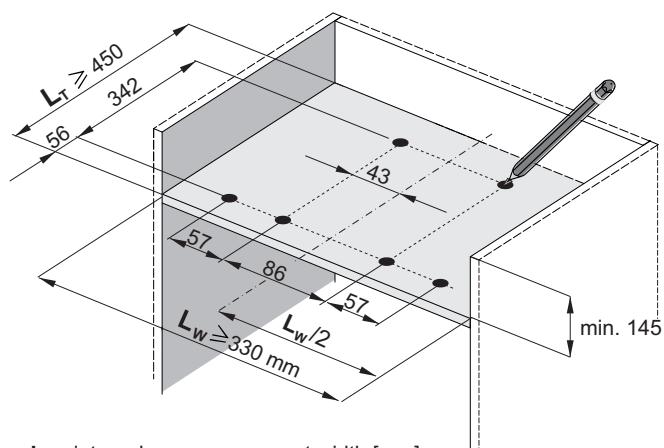




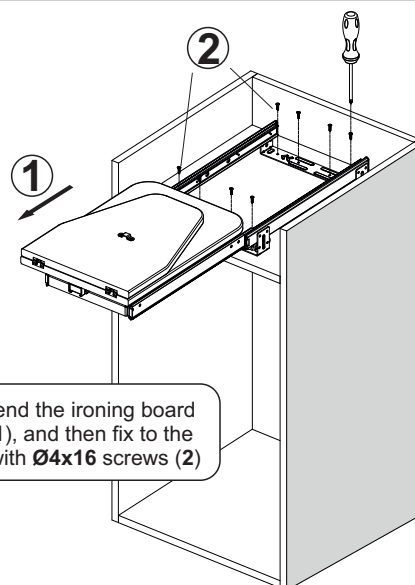
Components



1. Ironing board installation



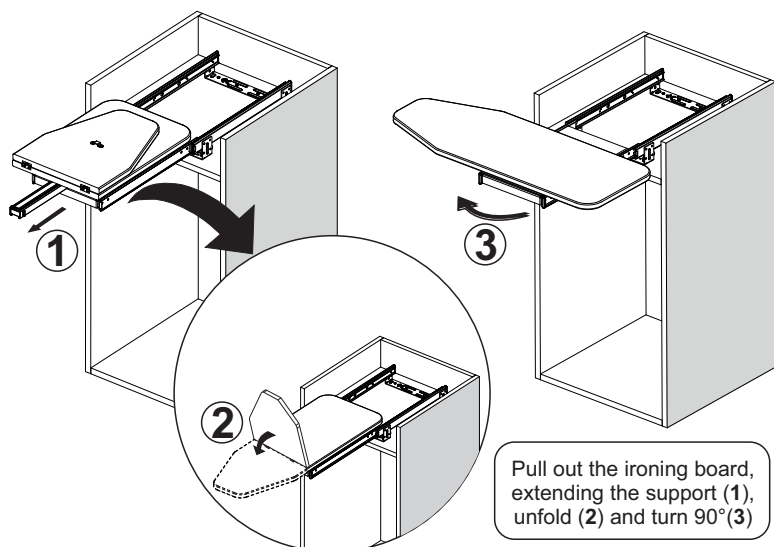
L_W - internal carcass segment width [mm]
 L_T - internal carcass segment depth [mm]



Fully extend the ironing board guides (1), and then fix to the carcass with Ø4x16 screws (2)

Note: The set includes screws Ø4x16

2. Extending the ironing board



Pull out the ironing board, extending the support (1), unfold (2) and turn 90° (3)

3. Folding away the ironing board

