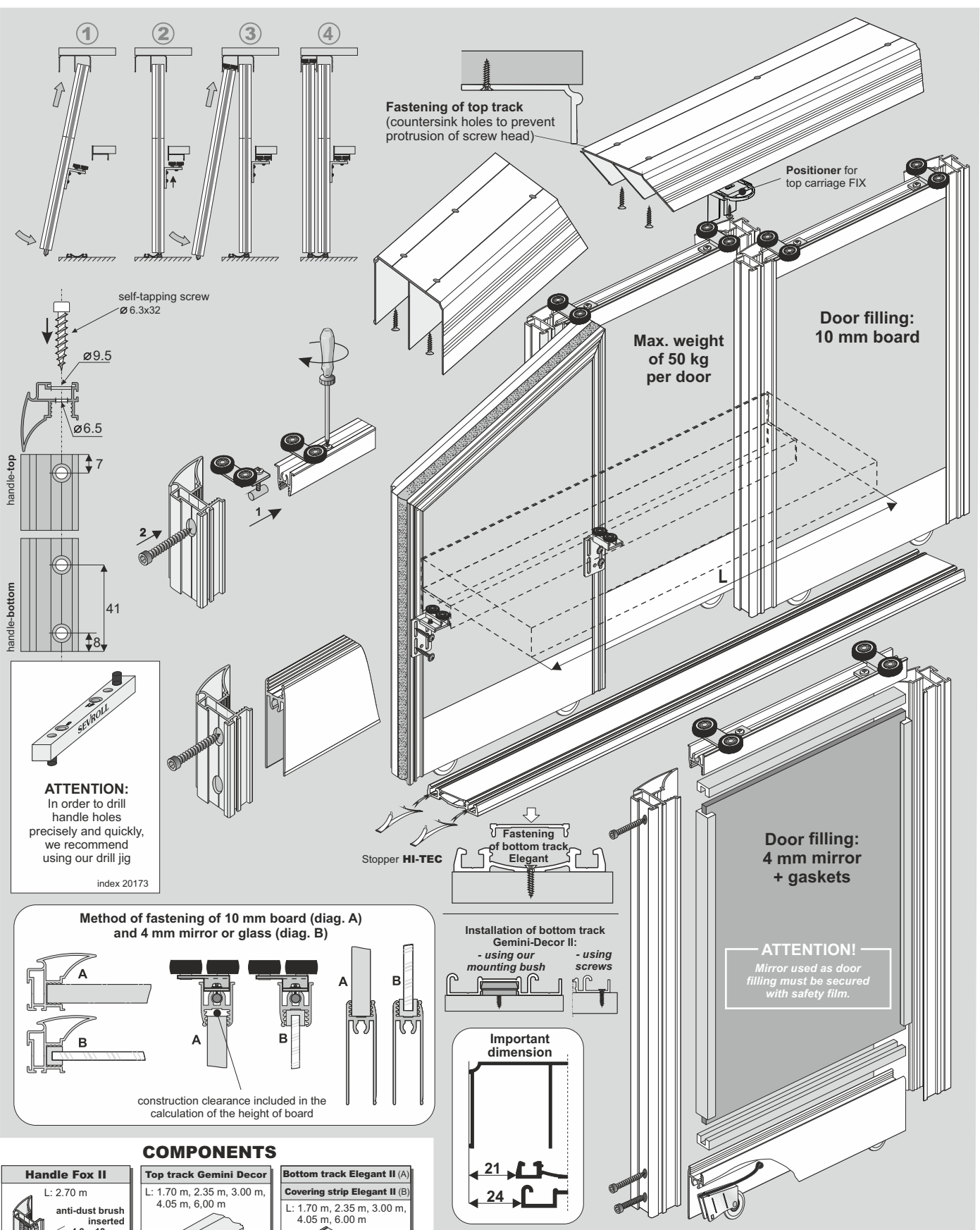




LINE

SYSTEM

Fox / GEMINI 10 EVEREST



COMPONENTS

Handle Fox II L: 2.70 m anti-dust brush inserted 4.8 x 13 mm Textile brush stop inserted 14 x 4 mm	Top track Gemini Decor L: 1.70 m, 2.35 m, 3.00 m, 4.05 m, 6.00 m 	Bottom track Elegant II (A) Covering strip Elegant II (B) L: 1.70 m, 2.35 m, 3.00 m, 4.05 m, 6.00 m
--	--	---

You must remember to purchase self-tapping screws to construct each door (4 screws per door)
When using mirror you must also remember to purchase gaskets

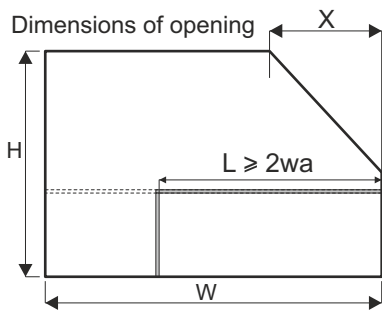
Set Everest-Fox II Carriage Everest left / right Joiner Everest Fox handle-horizontal profile Joiner Everest Fox handle-handle M6 x 6 - 8 pcs M3x10 - 2 pcs fastening - 2 pcs pin Ø5 3.5 x 9.5 - 4 pcs	Track for angle doors Everest L: 3.00 m 	Bottom horizontal profile Decor 10 (A) Top horizontal profile Decor 10 (B) L: 1.70 m, 2.35 m, 4.05 m L: 1.70 m, 2.35 m, 4.05 m 	Bottom carriage WD10V HI-TEC 	Guiding carriage 10-ka L R
--	---	---	---	--



LINE

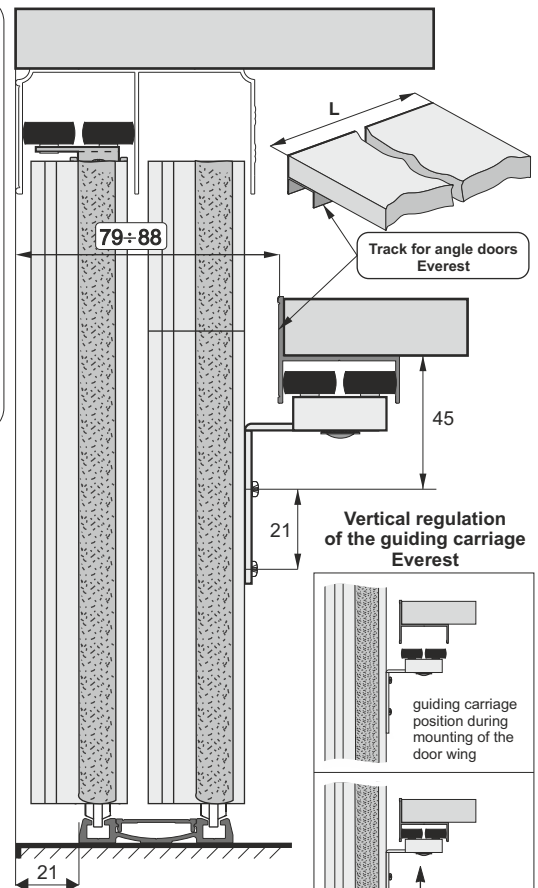
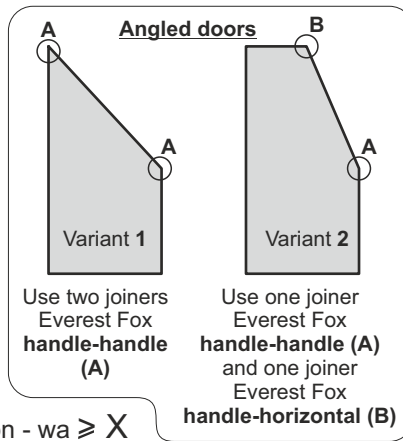
SYSTEM

Fox / GEMINI 10 EVEREST



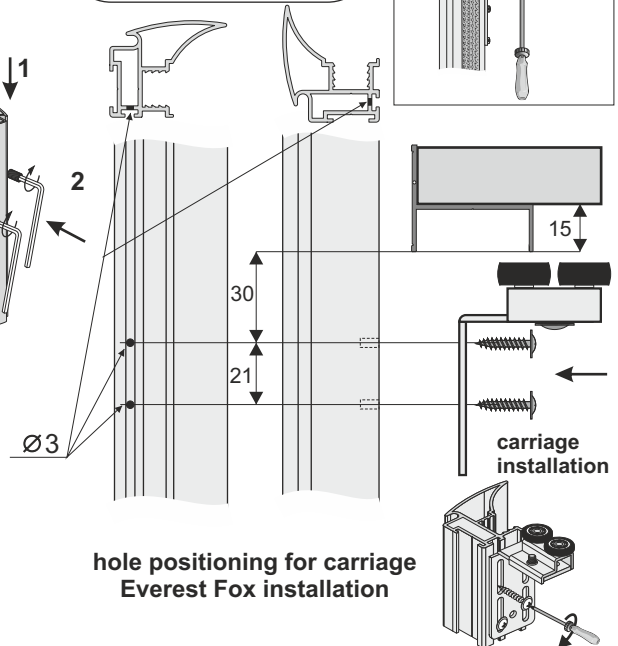
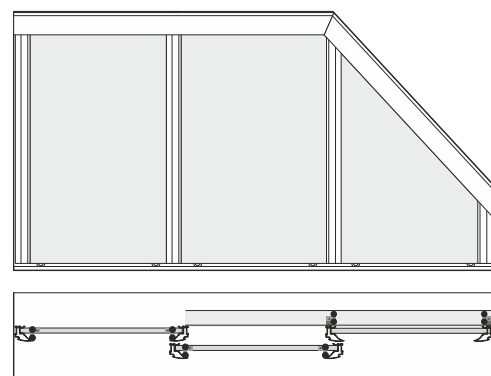
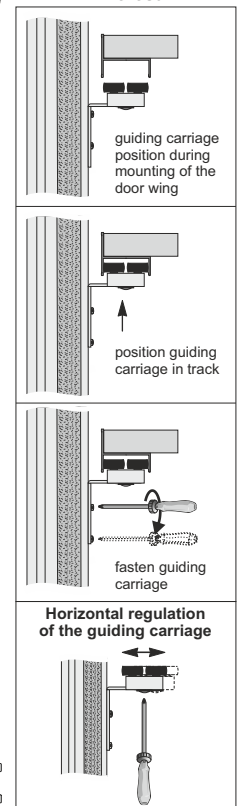
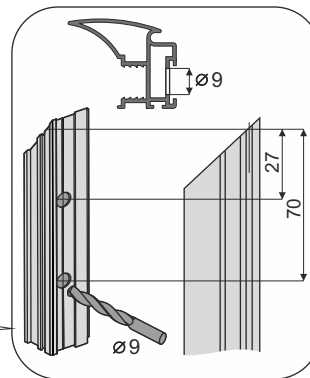
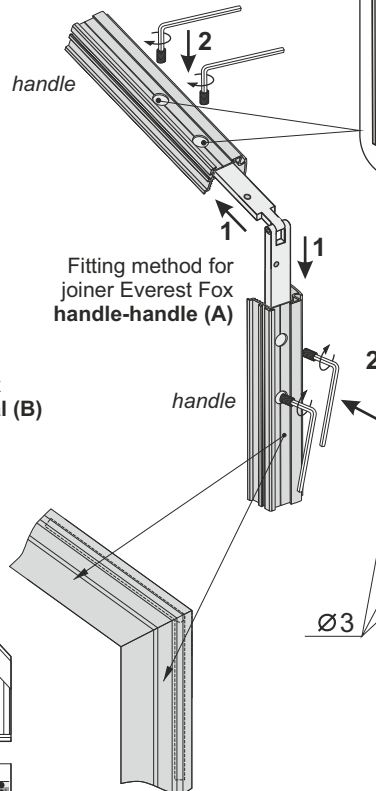
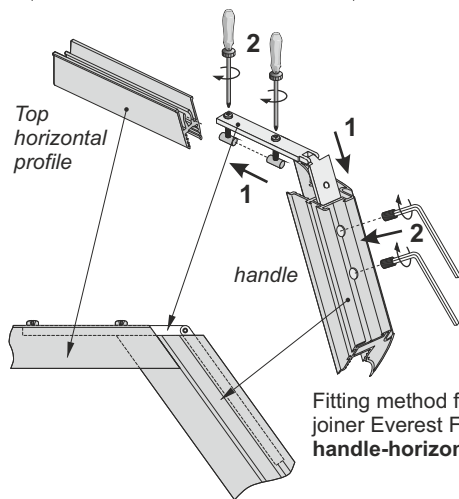
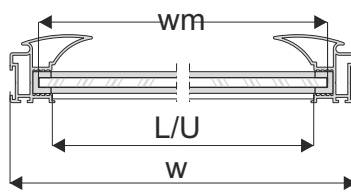
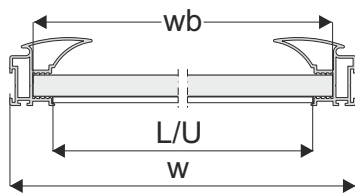
L - length of track Everest

X - angle width

wa - width of the wing with angle section - $wa \geq X$ **door filling – # 10 mm board, 4 mm mirror**

door height	- h	$h = H - 40 \text{ mm}$
board height	- hb	$hb = h - 64 \text{ mm}$
door width	- w (wa)	$w = (W - 3 \text{ mm} + Z) : N$
board width	- wb	$wb = w - 20 \text{ mm}$
lower horizontal profile length - L		$L = U = w - 37 \text{ mm}$
upper horizontal profile length - U		
mirror height	- hm	$hm = hb$
mirror width	- wm	$wm = wb - 4 \text{ mm}$

number of doors	- N	3	4
total door overlap	- Z	72 mm	108 mm

**ATTENTION!**

Remove protective film from aluminium elements (handles, tracks, connectors, etc.) prior to cutting them to the desired size. Film removal will reveal quality issues (eg. scratches)