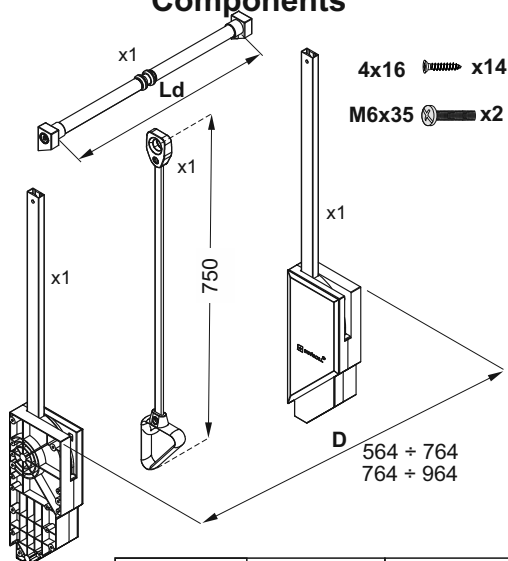
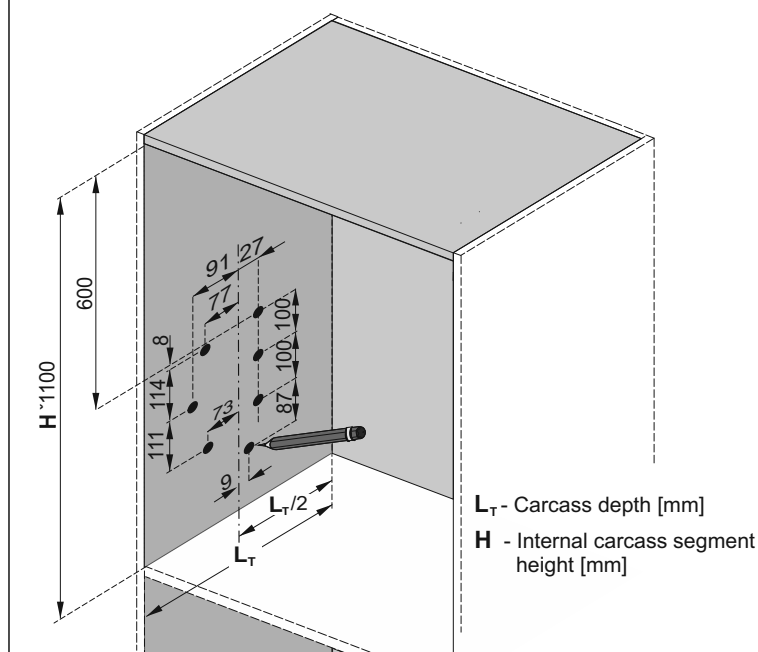
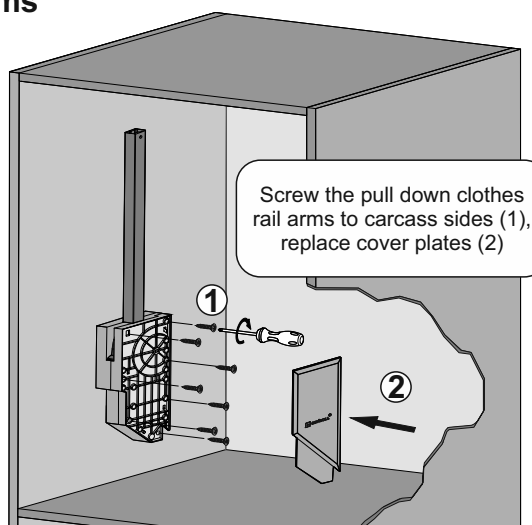
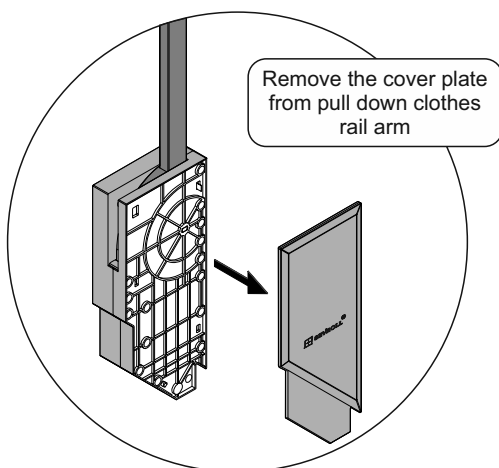
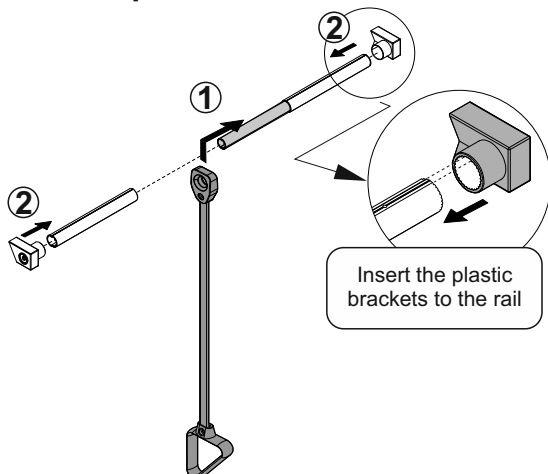


**Components**

Pull down clothes rail	Opening width D	length of the hanging rail Ld
600 ÷ 800	564 ÷ 764	480 ÷ 680
800 ÷ 1000	764 ÷ 964	680 ÷ 880

**Pull down clothes rail fixing positions****1. Installation of pull down clothes rail arms****2. Mounting the handle on the pull down clothes rail****3. Pull down clothes rail adjustment**