



SOFT-CLOSE

Sevromatic MINI sv-25, SV-40 and SV-60



Assembly of soft-close mechanism with systems:

GEMINI 4, GEMINI 10, COMFORT 10, MAXIM 18, SINGLE 10, TOP 10, TOP 18

GEMINI 4, GEMINI 10, COMFORT 10,
SINGLE 10, TOP 10

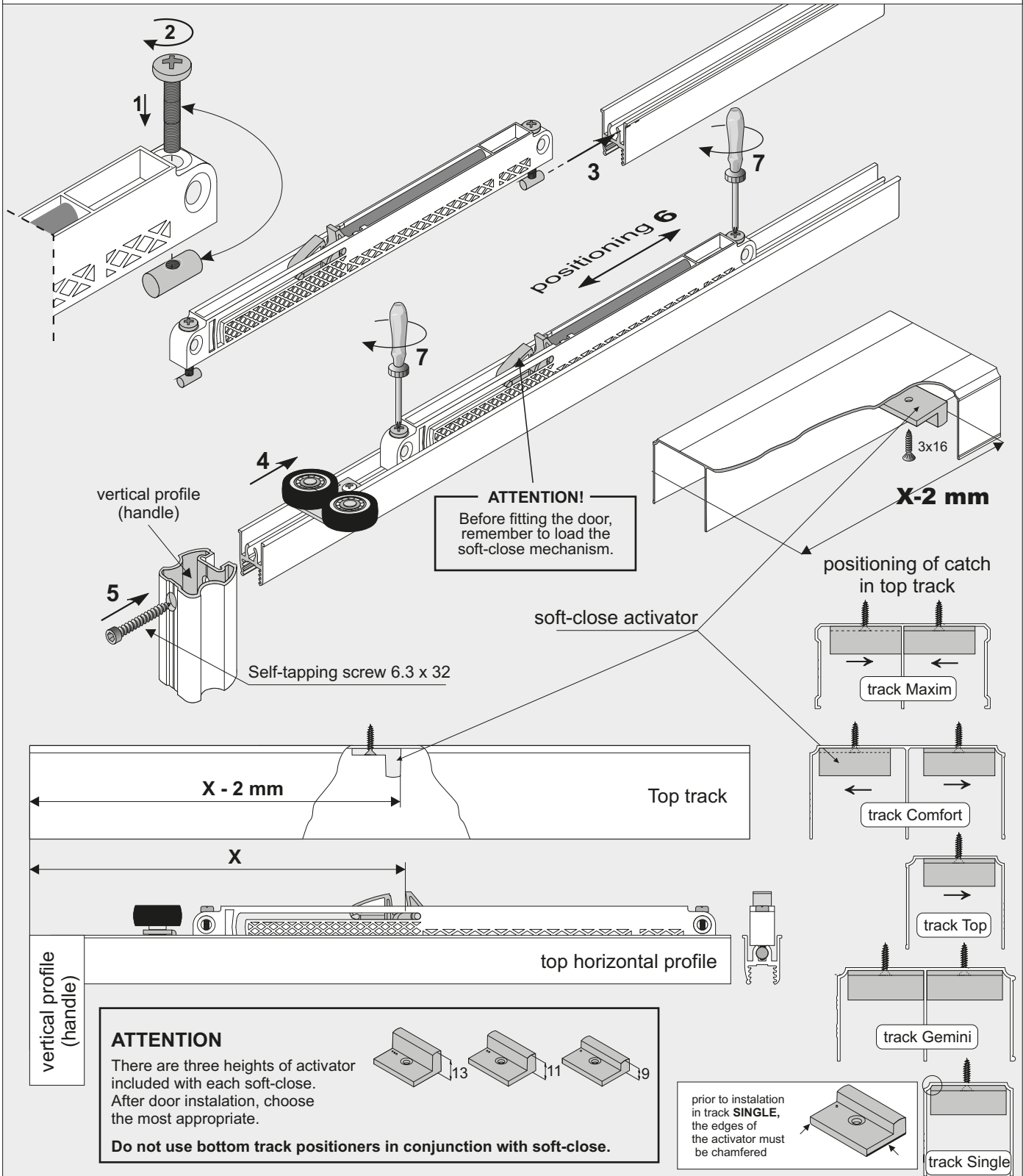
door height

$$h = H - 40 \text{ mm}$$

MAXIM 18, TOP 18

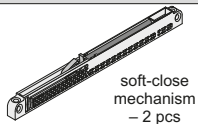
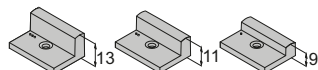
door height

$$h = H - 38 \text{ mm}$$



COMPONENTS

Soft-close set for sliding doors Sevromatic MINI SV-25 (25 kg), SV-40 (40 kg) and SV-60 (60 kg)

soft-close mechanism
- 2 pcs

soft-close activator (different sizes) - 2 sets

fastening pin - 4 pcs

screws M3x20 - 4 pcs

screws 3x16 - 2 pcs

screws 3.5x40 - 4 pcs





SOFT-CLOSE

Sevromatic MINI sv-25, SV-40 and SV-60



GEMINI 18, COMFORT 18,

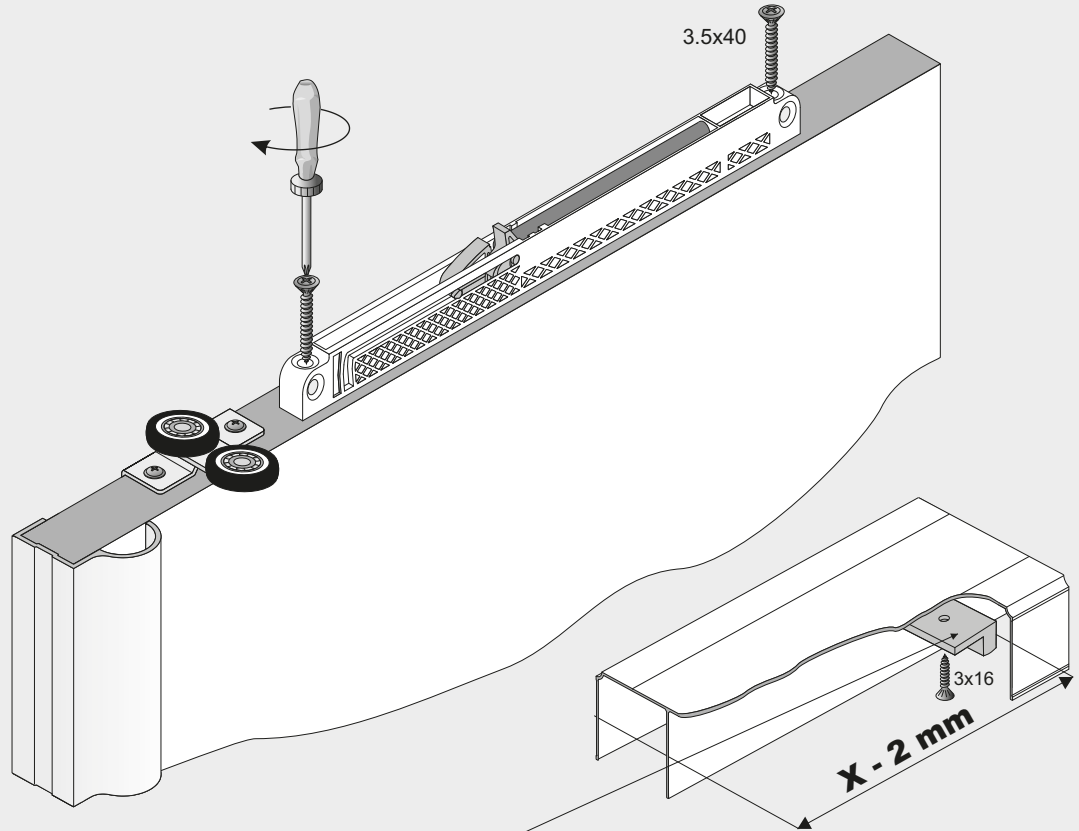
door height

$$h = H - 42 \text{ mm}$$

MAXIM 18 Board

door height

$$h = H - 40 \text{ mm}$$



Soft-close activator

