

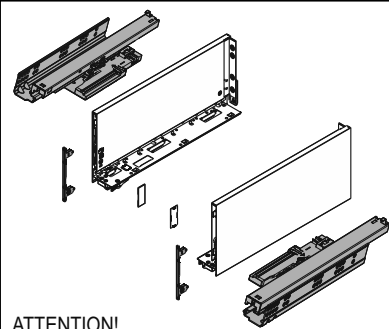
Height 96\* / 134\*\* / 181\*\*\* mm

# Drawer PLATINIUM-18 4D Slim PUSH

SEVROLL

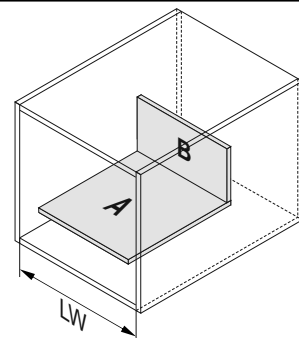
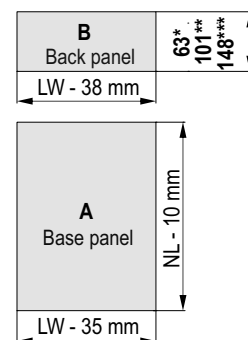
Attention! \* Dimensions for 96 mm drawer / \*\* Dimensions for 134 mm drawer / \*\*\* Dimensions for 181 mm

## Components



ATTENTION!  
screws are **not** included

## Cutting dimensions of 18 mm MDF

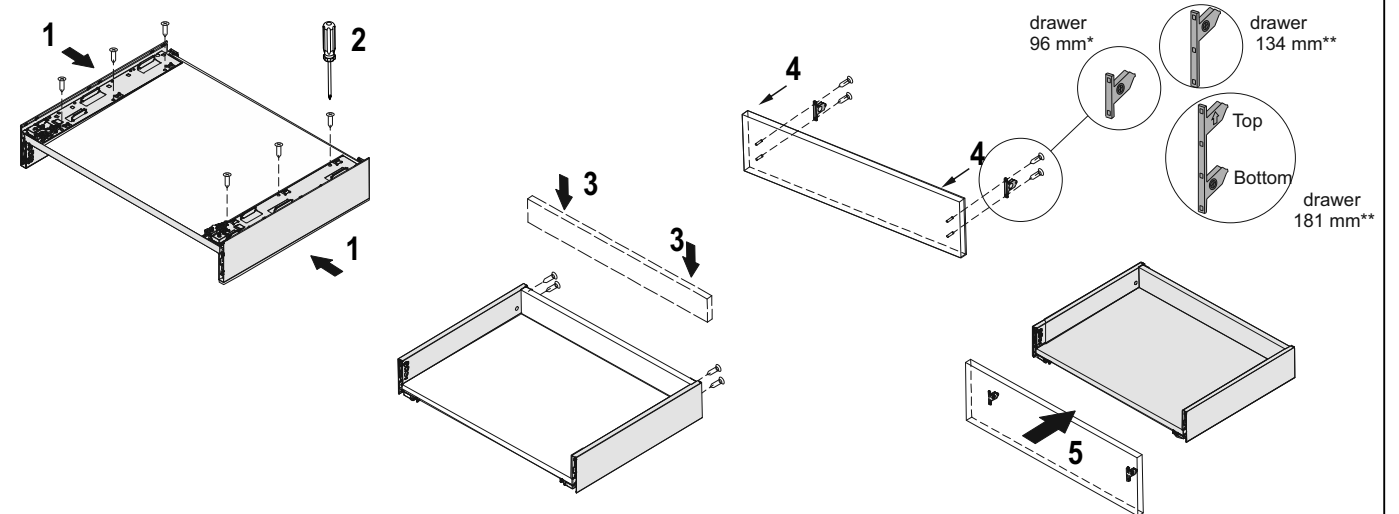


NL : 250 [mm]  
270  
300  
350  
400  
450  
500  
550  
600

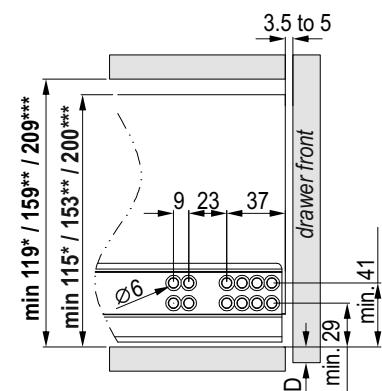
A – Base panel  
B – Back panel

LW – internal cabin width  
NL – nominal length of drawer

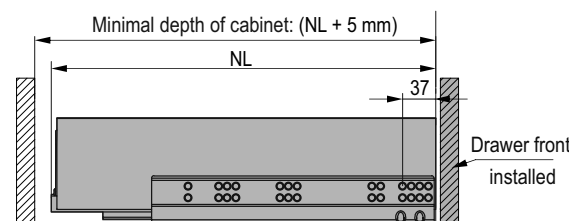
## Drawer assembly



## Drawer runner positioning

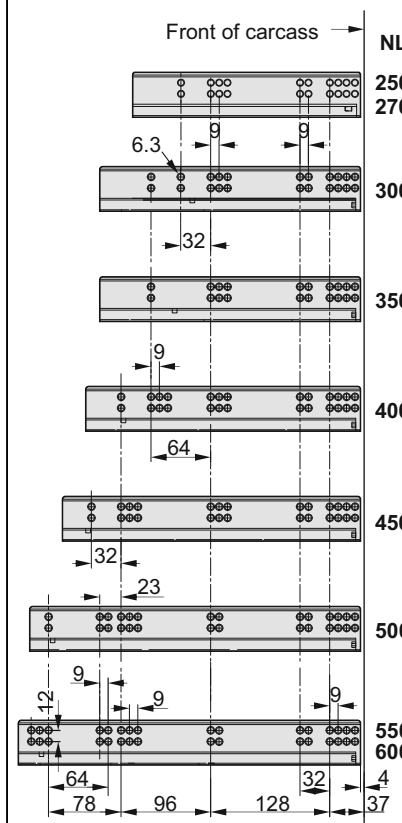


D - Positioning of drawer front

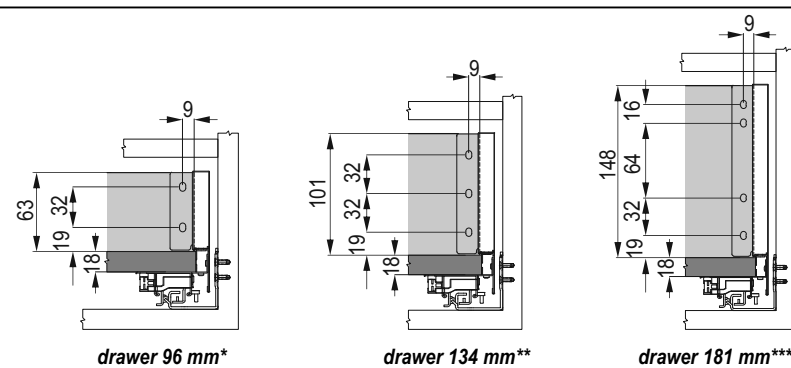


**Warning:**  
in drawers with recessed  
fronts, the guides should be  
positioned further back by the  
thickness of the drawer front!

## Installation measurement



## Mounting dimensions of back panel

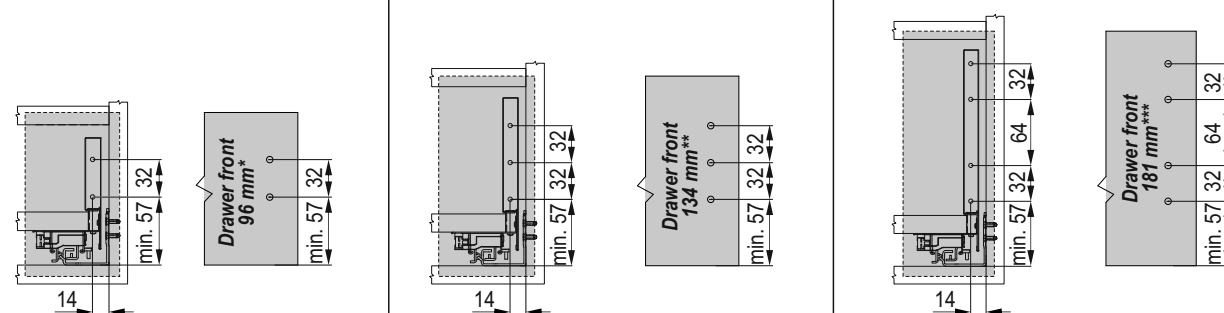


drawer 96 mm\*

drawer 134 mm\*\*

drawer 181 mm\*\*\*

## Mounting dimensions for drawer front panel

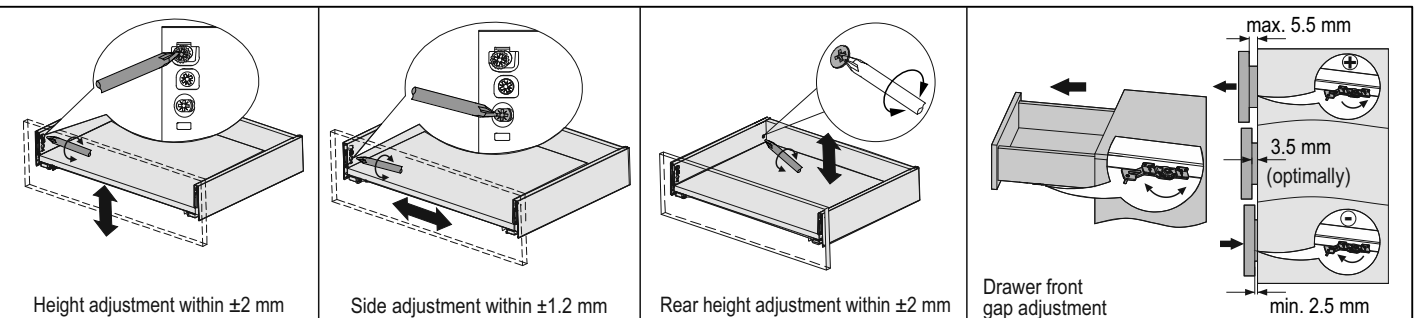


Drawer front  
96 mm\*

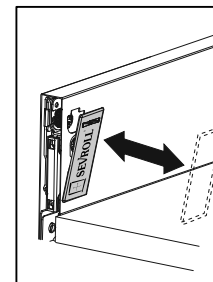
Drawer front  
134 mm\*\*

Drawer front  
181 mm\*\*\*

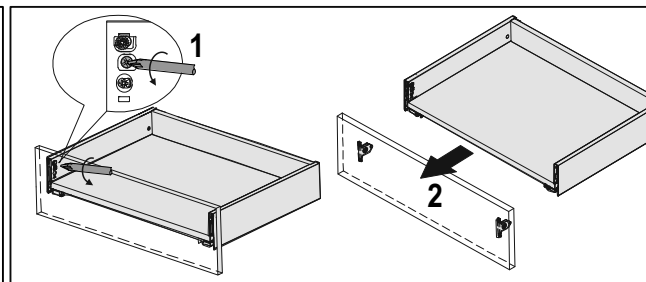
## Drawer front regulation



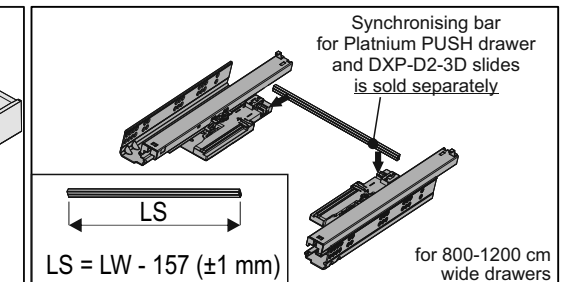
## Cover insertion / removal



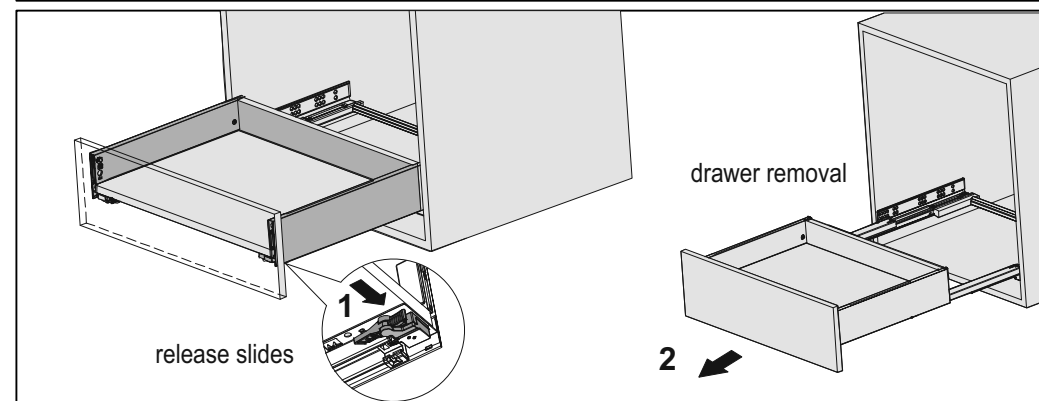
## Drawer front panel removal



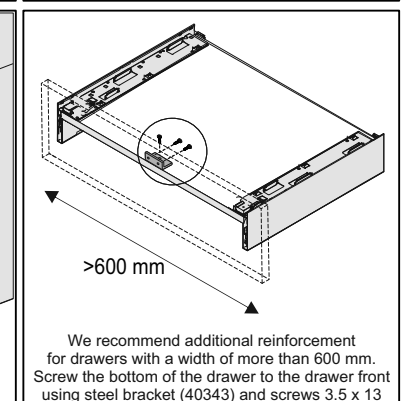
## Installation of synchronizing bar Platinum 4D



## Drawer removal



## Drawer strengthening



We recommend additional reinforcement  
for drawers with a width of more than 600 mm.  
Screw the bottom of the drawer to the drawer front  
using steel bracket (40343) and screws 3.5 x 13