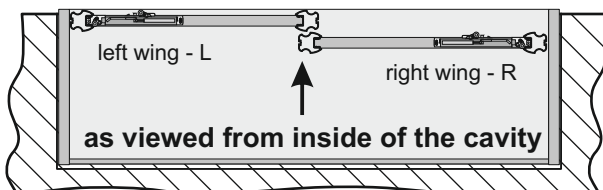




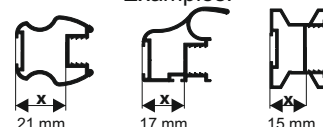
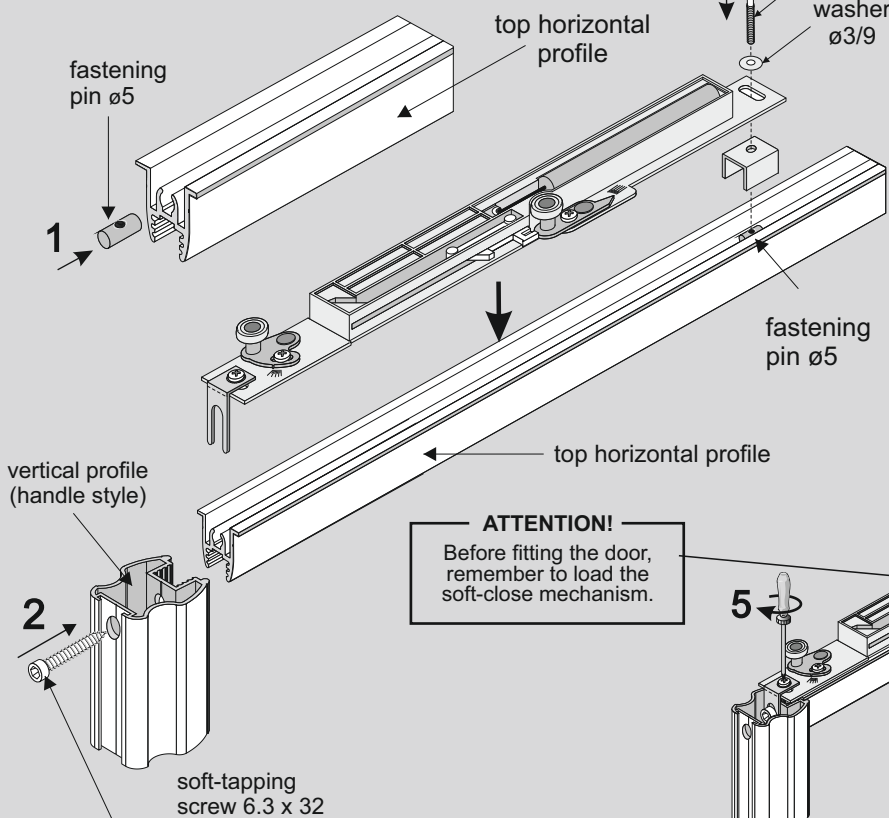
Soft-close

SEVROMATIC SV-25, SV-50**Assembly of soft-close mechanism with systems:
GEMINI 4, GEMINI 10, GEMINI 18 Frame, COMFORT 10,
SINGLE 10, SINGLE 18 Frame, TOP 10****GEMINI 4, GEMINI 10, GEMINI 18 Frame,
COMFORT 10, SINGLE 10, SINGLE 18 Frame, TOP 10****door height** **$h = H - 40 \text{ mm}$** **ATTENTION!**Soft-close mechanisms are specific to left or right door wings.
The symbols L-left, R- right are marked on the underside of the mechanism.Calculating distance mounting
gripper from the wardrobe side

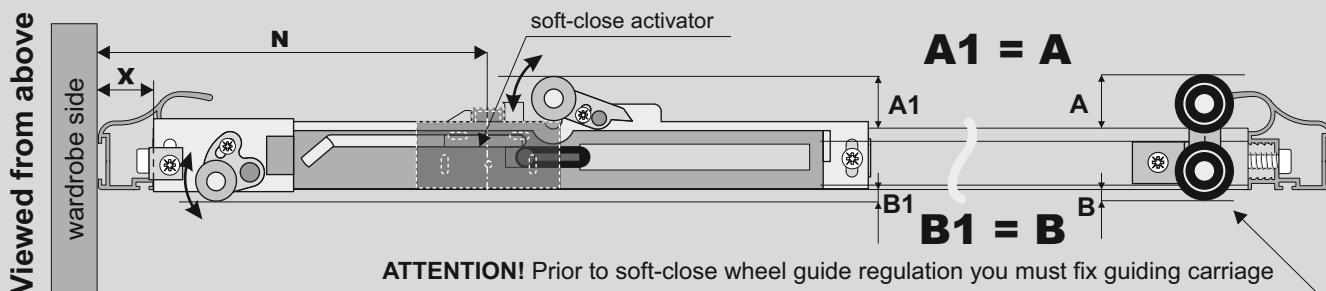
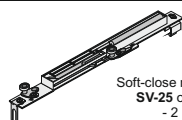
$N = 110 \text{ mm} + X$

X dimension is variable and depends
on the type of handle.

Examples:

**Sevromatic SV-25** - for doors with
carriages 14-25 kg**Sevromatic SV-50** - for doors with
carriages 25-50 kgOptimal operational effect
of soft-close will be obtained
when the ratio of door height
to door width h/w is between
1/1 and 3/1**Lateral adjustment**Depending on handle style used:
ROMEO, GEMINI, 10-ka II... etc.

- regulate first - 4,
- fasten screws - 5.

**COMPONENTS**Soft-close set for sliding doors **Sevromatic SV-25, SV-50**Soft-close mechanism
SV-25 or SV-50
- 2 pcsSoft-close
activator
- 2 pcsSpacer
- 2 pcs

fastening pin - 2 pcs
fastening washer - 4 pcs
washer - 2 pcs
bolt M3 x 12 - 2 pcs



screw 4x20 - 6 pcs
screw 4x20 - 2 pcs
screw 3.5x30 - 4 pcs





Soft-close

SEVROMATIC SV-25, SV-50

Assembly of soft-close mechanism with systems: GEMINI 18, COMFORT 18

GEMINI 18, COMFORT 18

door height

$$h = H - 42 \text{ mm}$$

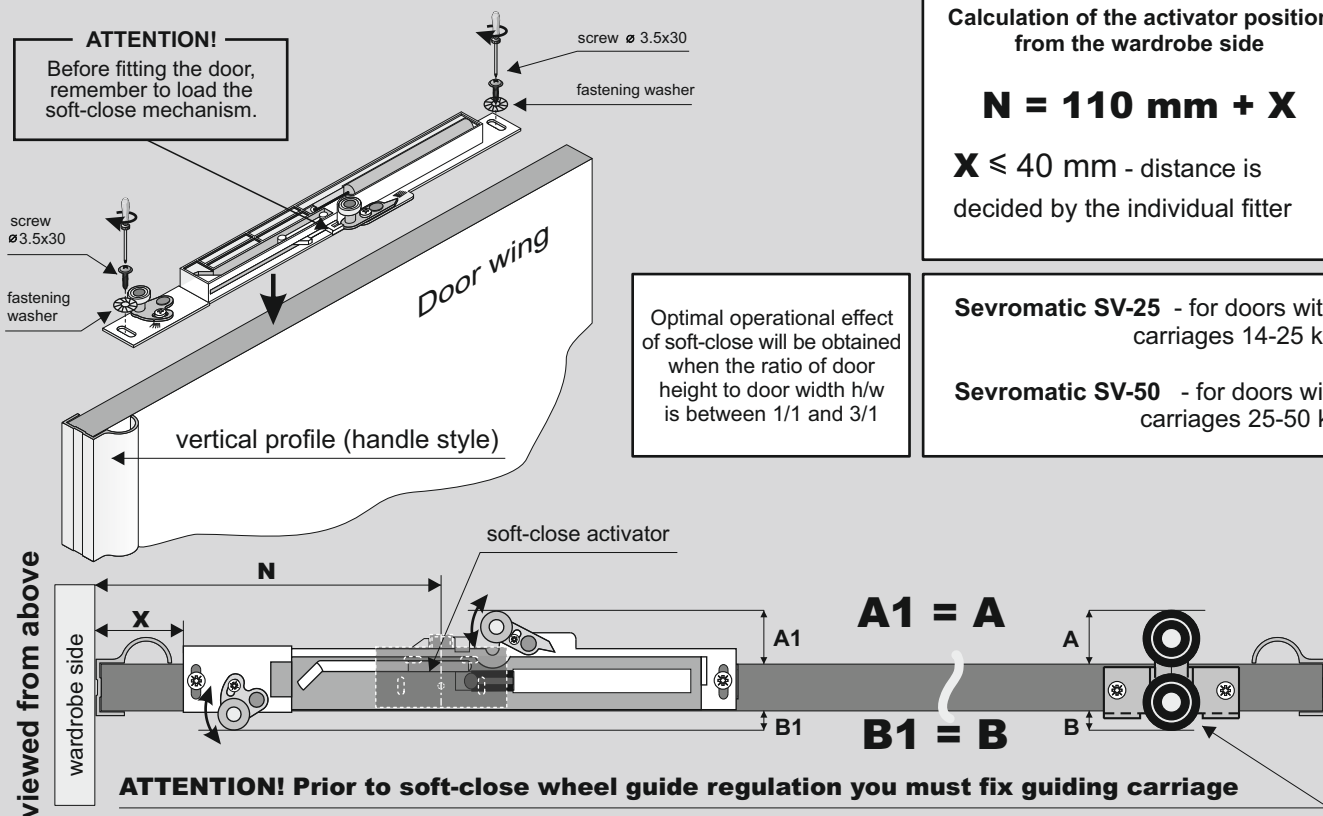
Calculation of the activator position
from the wardrobe side

$$N = 110 \text{ mm} + X$$

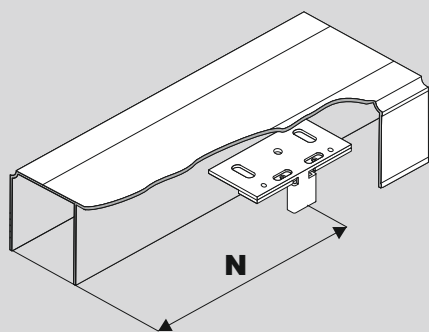
$X \leq 40 \text{ mm}$ - distance is
decided by the individual fitter

Sevromatic SV-25 - for doors with
carriages 14-25 kg

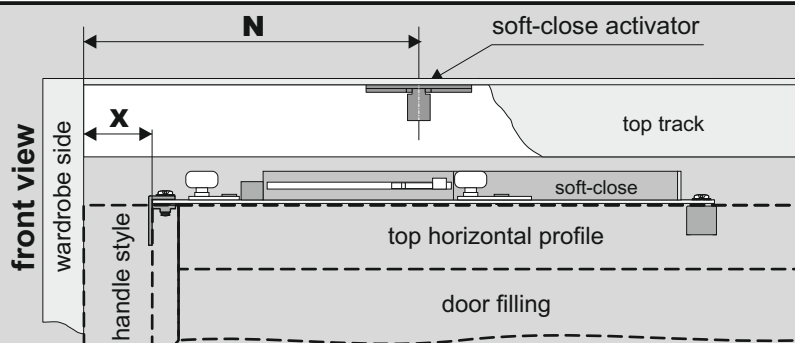
Sevromatic SV-50 - for doors with
carriages 25-50 kg



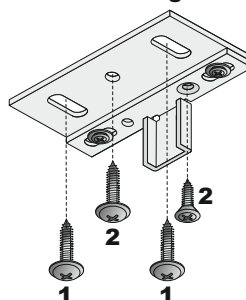
Assembly of soft-close catch with systems: GEMINI 4, GEMINI 10, GEMINI 18, GEMINI 18 Frame, COMFORT 10, COMFORT 18, SINGLE 10, SINGLE 18 Frame, TOP 10



$$N = 110 \text{ mm} + X$$



Fastening method of soft-close activator



1. fix soft-close activator
with screws 4x20.
2. regulate (regulation
on two levels), and
then block with
screws 4x20.