



LINE

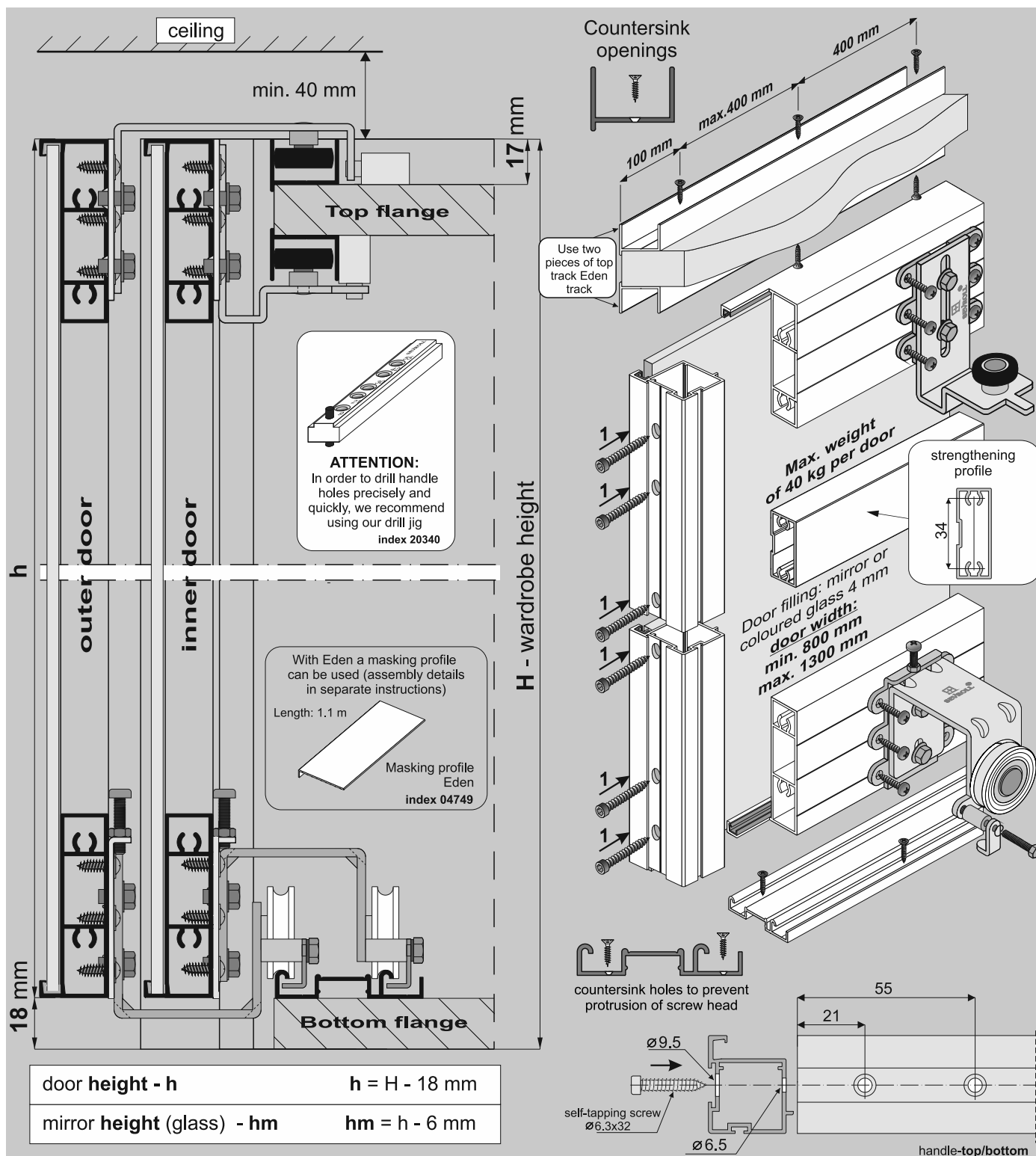
Pax XL

SYSTEM

EDEN 4 – 3 door wings



SEVROLL®



COMPONENTS

Handle Pax XL L: 2.70 m, 3.00 m Anti-dust brush (inserted) 4.8 x 6 mm Textile door stop (inserted) 14 x 4 mm	Gasket for frame Type II (index - 20167)	Horizontal profile Eden XL L: 1.70 m, 2.35 m, 3.00 m	Set for sliding door Eden – 2 door wings (inner and outer) x4 x4 x4 x2	Set for third door Eden – 1 inner door x2 x2 x1 x2 x2 x2
Bottom track Gemini-Decor II L: 1.70 m, 2.35 m, 3.00 m, 4.05 m, 6.00 m 53	Top track Eden L: 1.70 m, 2.35 m, 3.00 m, 6.00 m 24	Strengthening profile L: 3.00 m	screw 3.5x20 x 4 screw M4x20 x 4 self-tapping screw 3.9x13 x 48 spring washer 4 x 4	Soft-close MINI SV-25 (index: 20359-SV) or MINI SV-40 (index: 20260-SV) x4 Central SV-25 (20360-BL) or Central SV-40 (20297-BL) x1

You must remember to purchase self-tapping screws to construct each door (min. 8 screws per door).



LINE

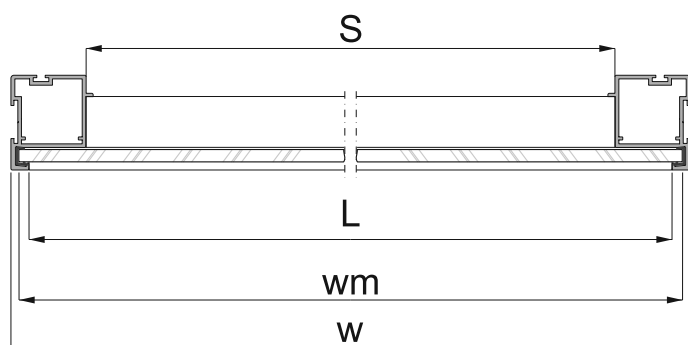
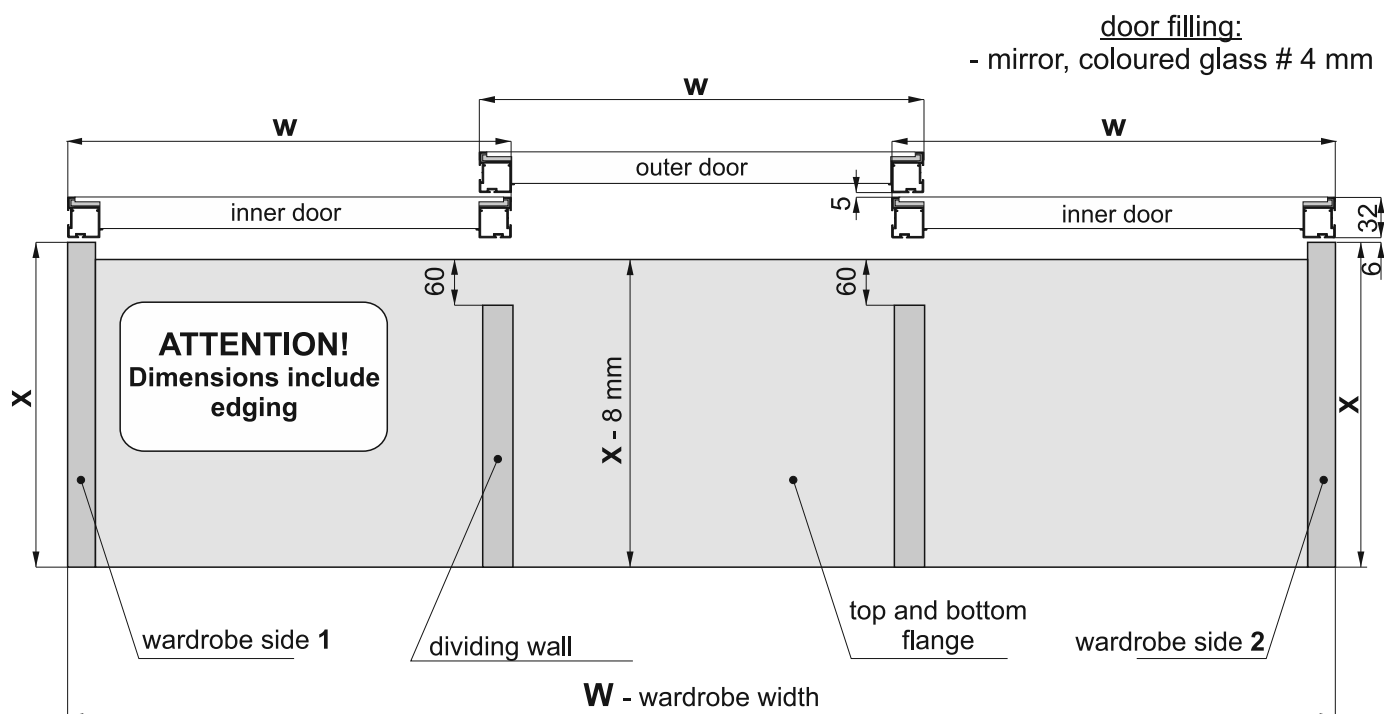
Pax XL

SYSTEM

EDEN 4 – 3 door wings



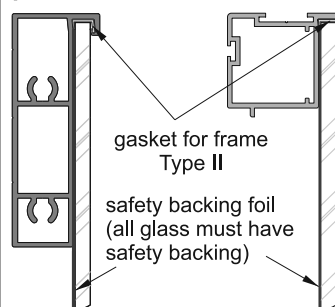
SEVROLL®



Installation method for fitting mirror or coloured glass 4 mm

- with
horizontal
profile

- with
handle



ATTENTION!

Due to the fact that no plinth is needed in system Eden, attention must be paid to the bottom flange being positioned level to the floor. Additionally, when using furniture slides, they should be placed along the whole length so that the bottom flange and bottom track does not bend.

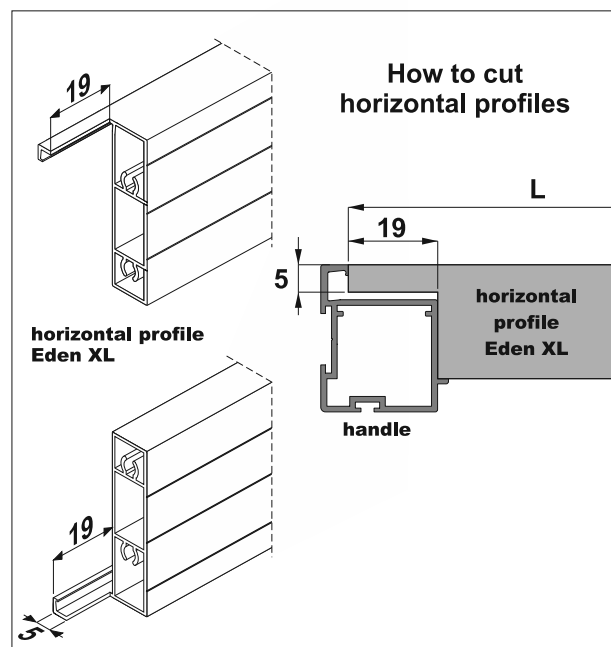
Door width	$w = (W + 50 \text{ mm}) : 3$
Mirror width (glass)	$w_m = w - 6 \text{ mm}$
Horizontal profile length Eden XL	$L = w - 12 \text{ mm}$
Strengthening profile length	$S = w - 50 \text{ mm}$

ATTENTION!

Rear mirror / coloured glass surface must be secured with safety backing foil (excluding glass surface glued with mirror adhesive).
The edges of glass must be polished.

ATTENTION

In Eden system with doors taller than 2 m it is possible for the door wing to bow +/- 5 mm





LINE

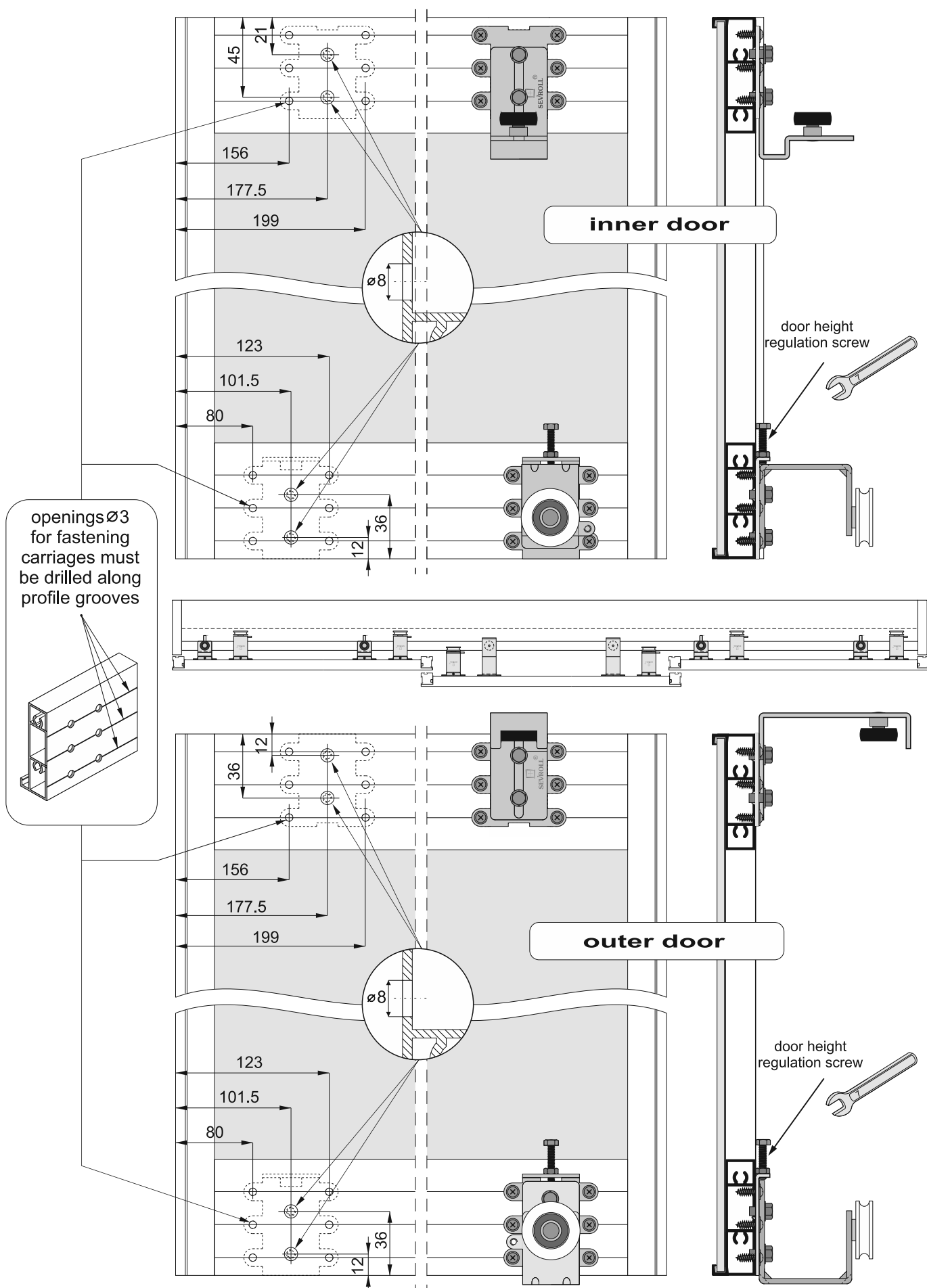
Pax XL

SYSTEM

EDEN 4 – 3 door wings



SEVROLL®





LINE

Pax XL

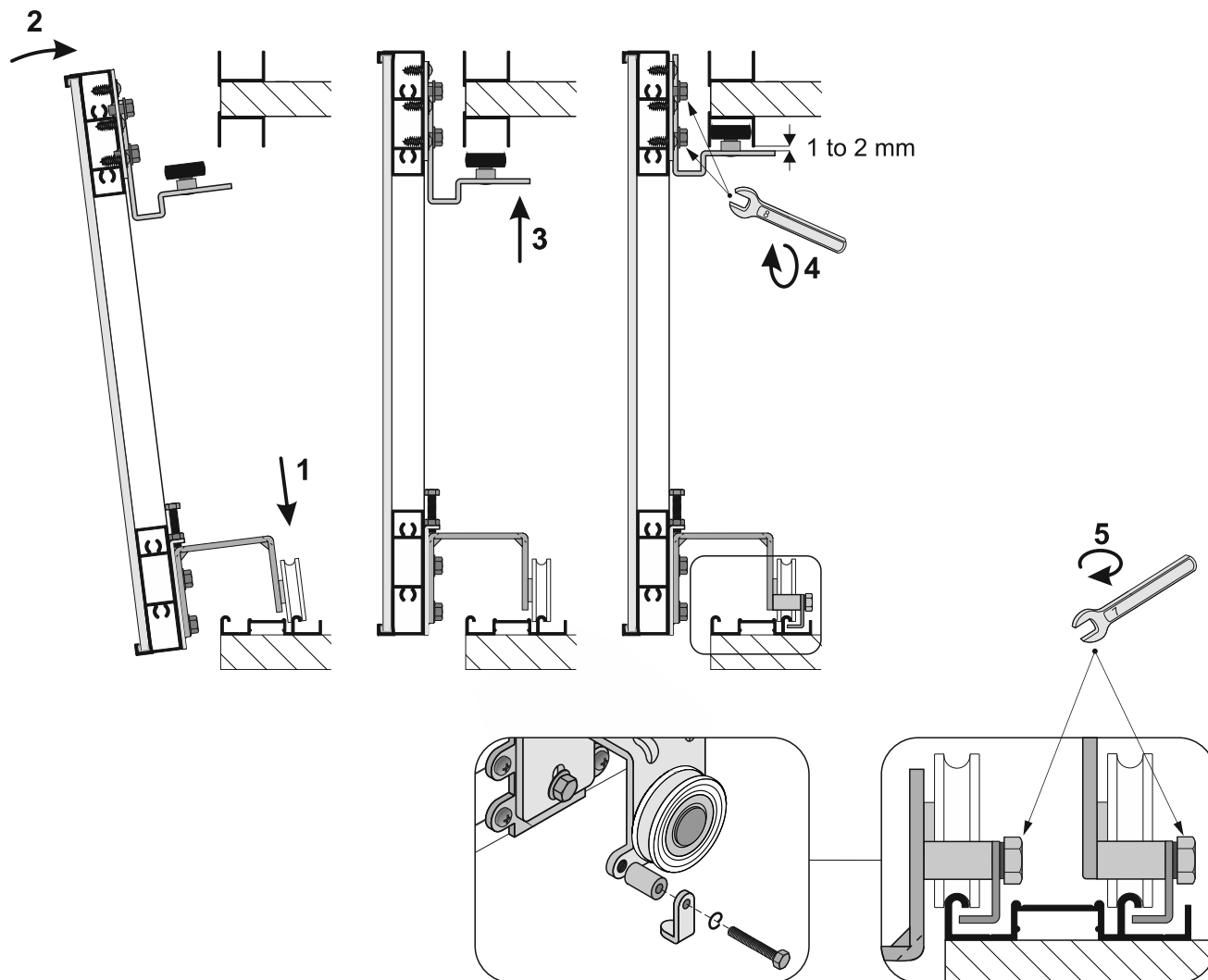
SYSTEM

EDEN 4 – 3 door wings



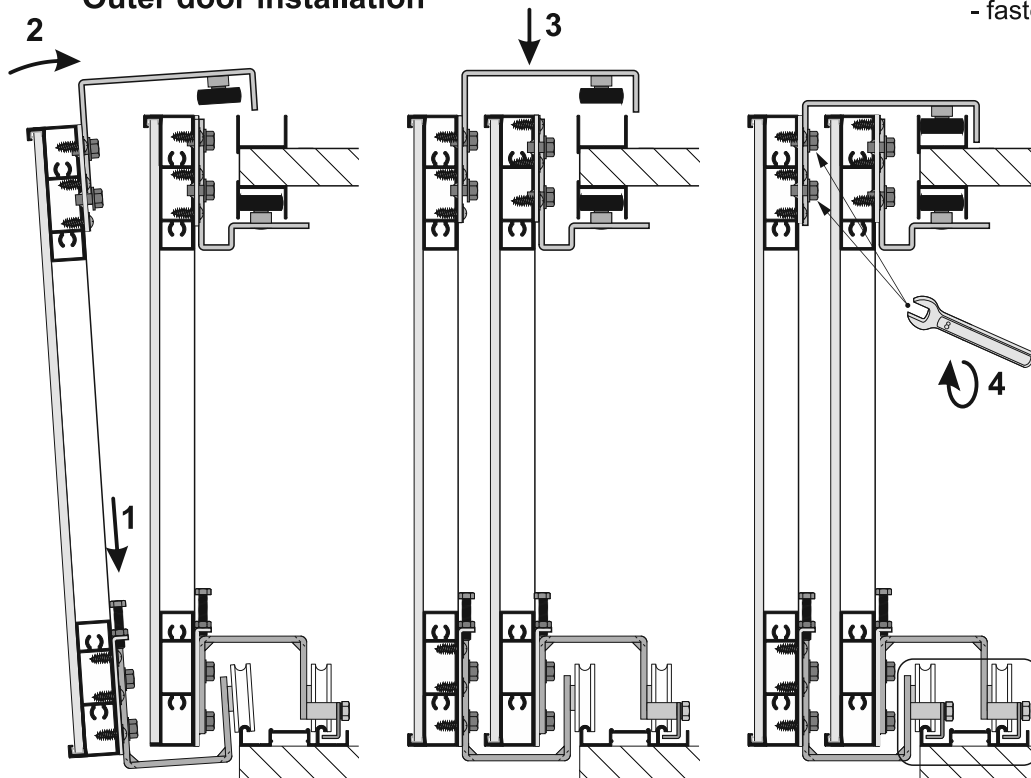
SEVROLL®

Inner door installation



securing catch
- fasten after door assembly

Outer door installation





LINE

Pax XL /

SYSTEM

EDEN 4 – 3 door wings



SEVROLL®

Soft-close installation

