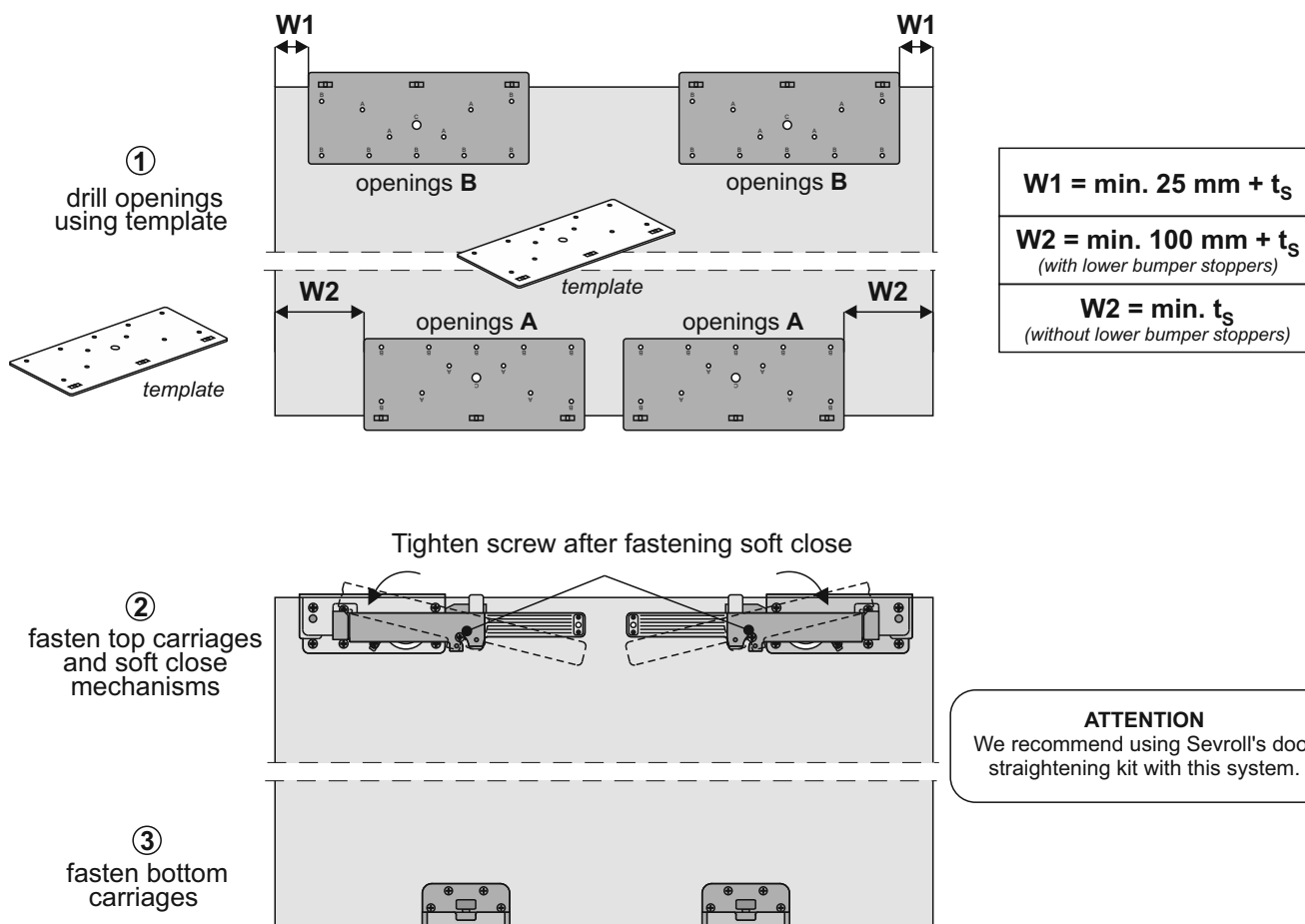
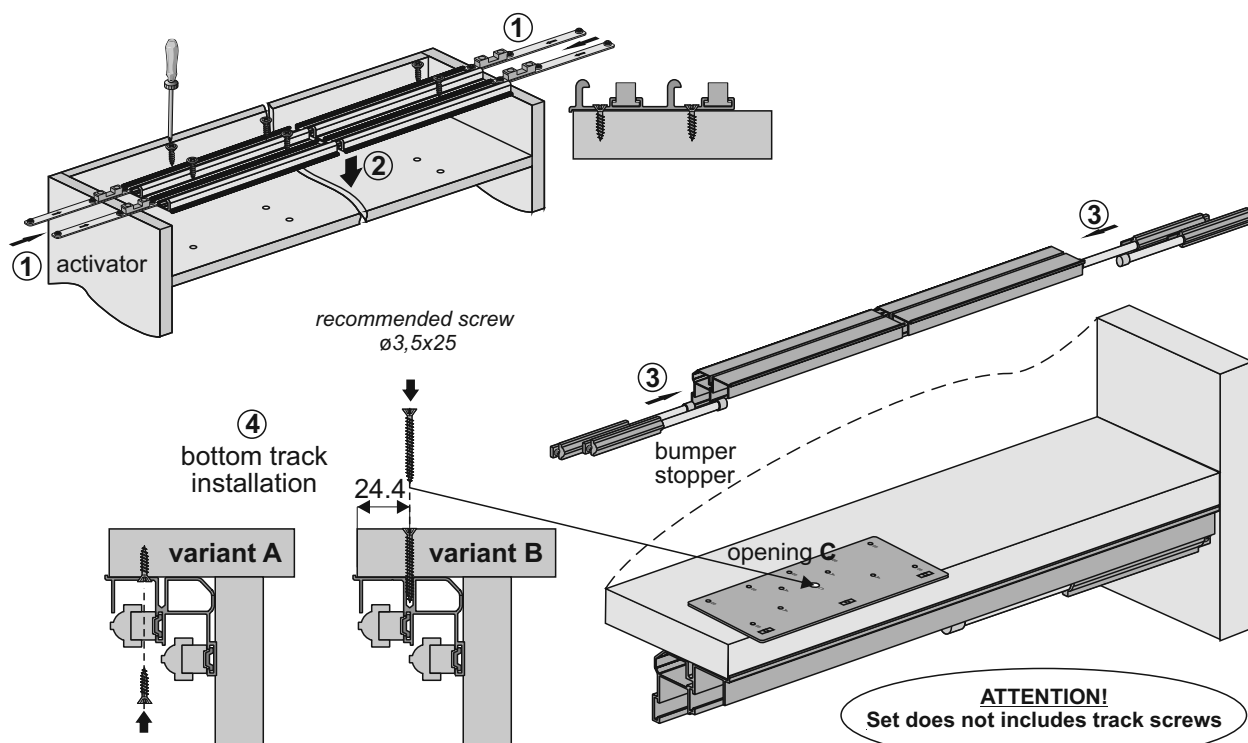




Carriage fastening



Track installation





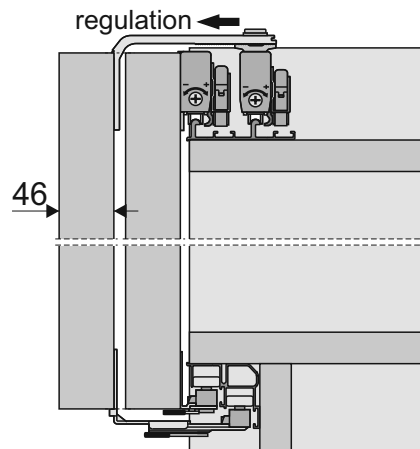
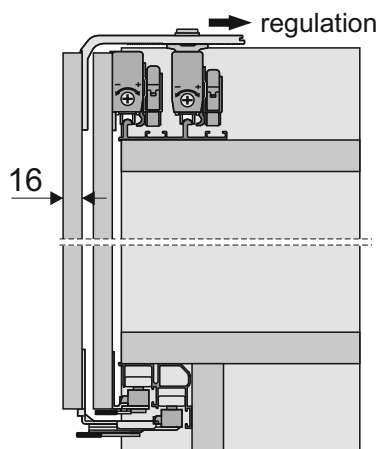
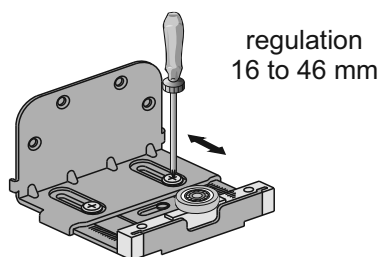
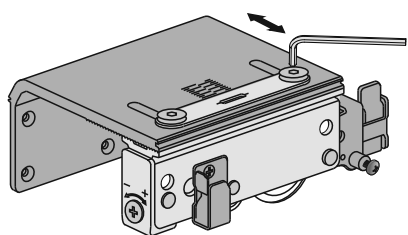
SYSTEM

CAPITOL

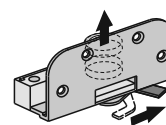
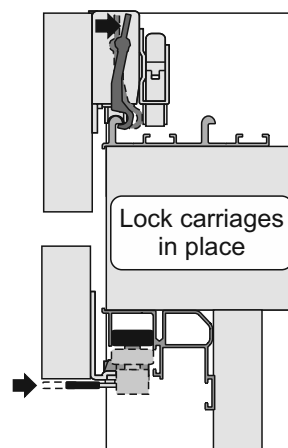
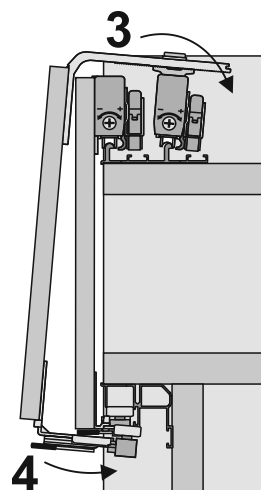
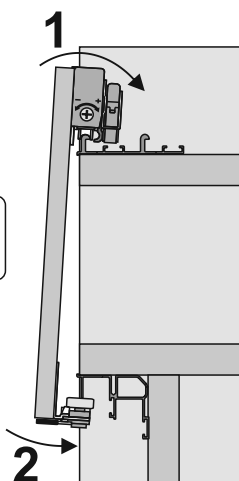
SEVROLL

Door installation

Depending on door thickness used, **prior to assembly**, the external guides need to be adjusted correctly

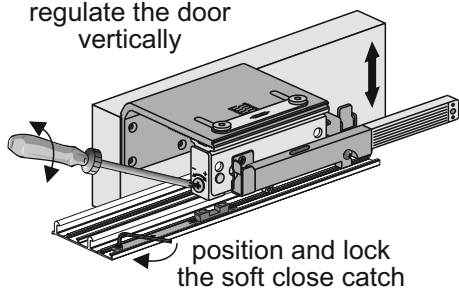


door assembly
order

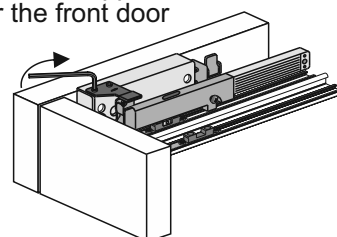


Adjustment

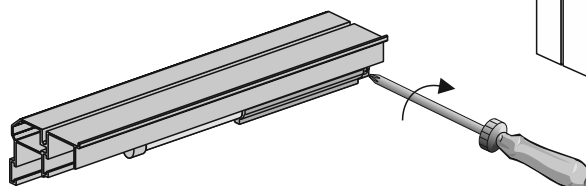
regulate the door
vertically



fasten stopper
for the front door

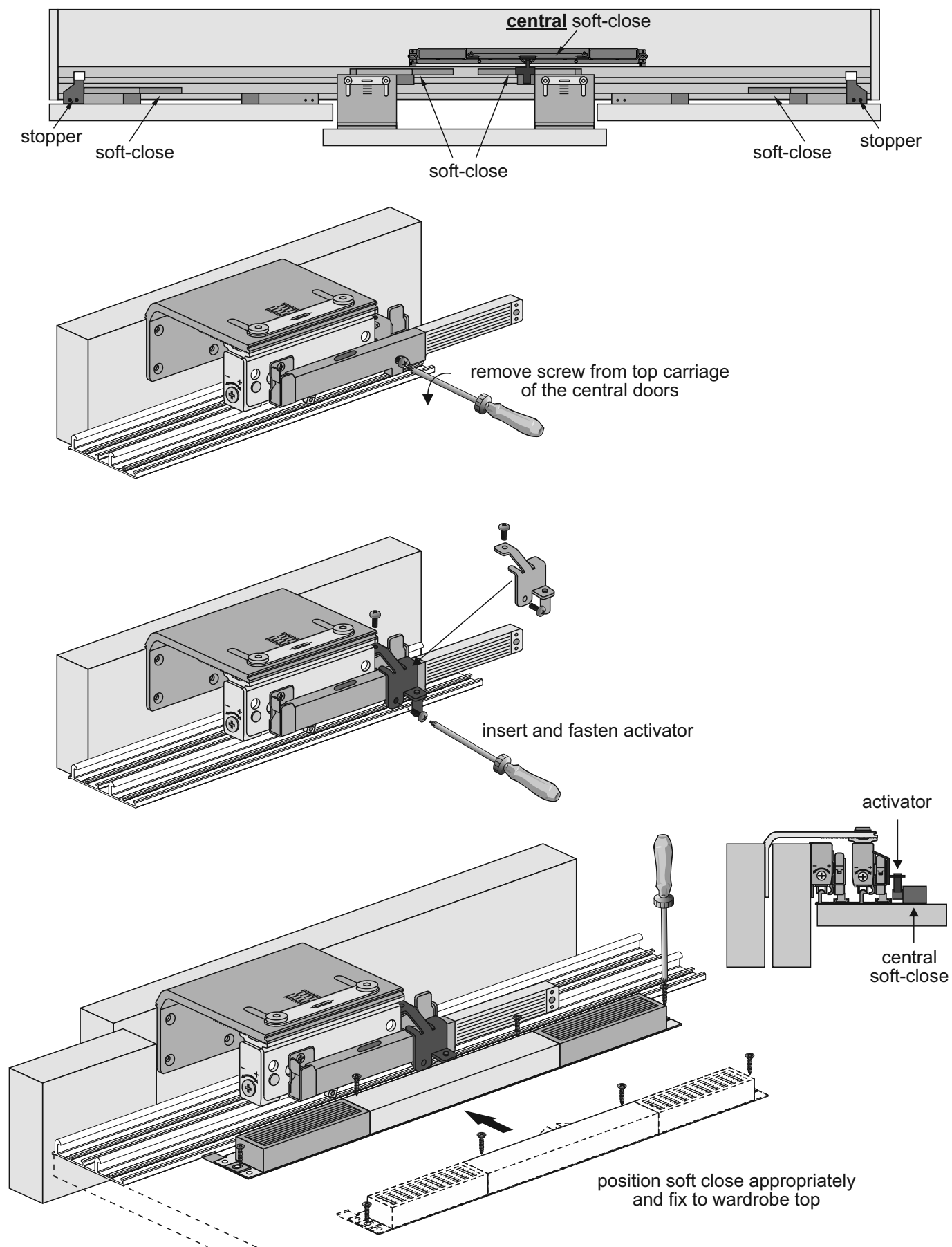


fasten bottom
bumper stopper





Set for three wings – assembly of central soft-close



ATTENTION!

Remove protective film from aluminium elements (handles, tracks, connectors, etc.) prior to cutting them to the desired size. Film removal will reveal quality issues (eg. scratches)



INSTALLATION OF DISTANCING GUIDES CAPITOL

Guides are fitted in order to eliminate door bowing (caused by low quality board)

