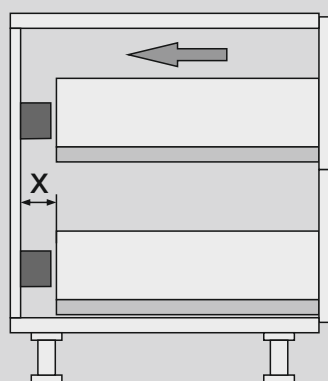
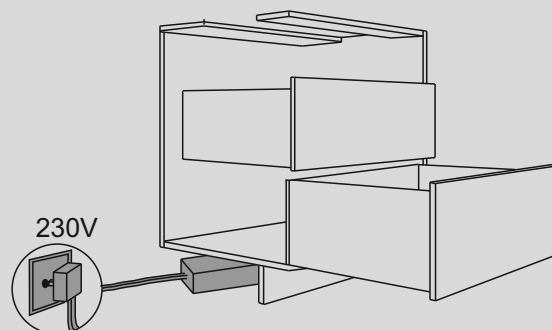
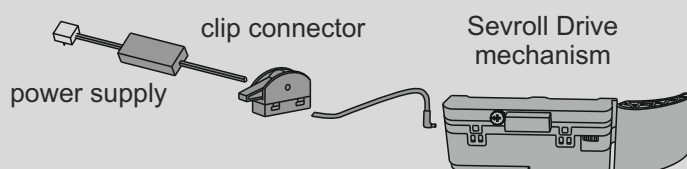
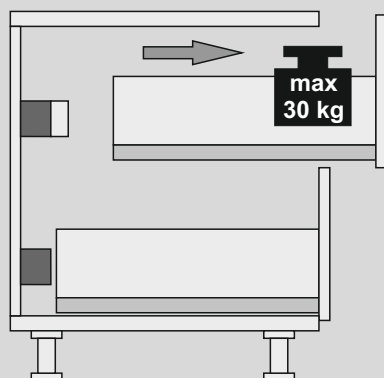


Max. drawer load - **30 kg**

Cabinet dimensions



$$43 \leq x \leq 46$$

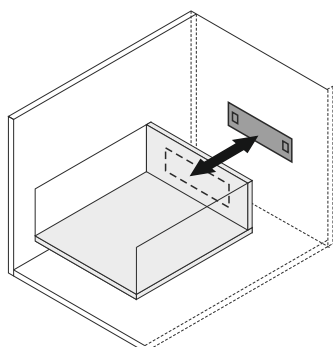


COMPONENTS

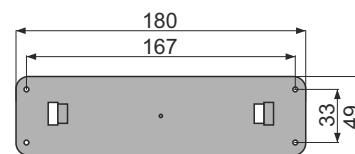
Electric drawer opening mechanism-Sevroll Drive				
Sevroll Drive mechanism	fastening plate	X1	cable	L: 1.2 m
X1	clip connector	X1	bumper	X4
	end cap for cable	X2	screw 4x12	X4

Power supply for Sevroll Drive mechanism	
24V	L: 3.5 m

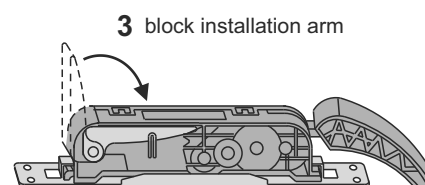
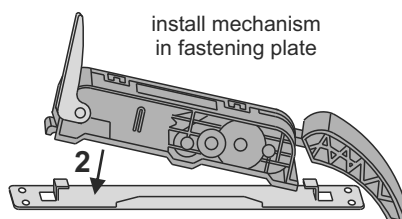
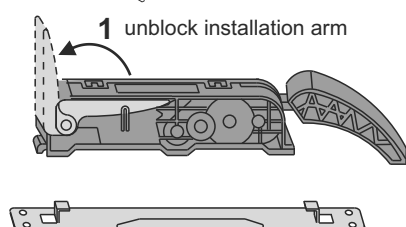
Sevroll Drive mechanism installation to carcass with fastening plate



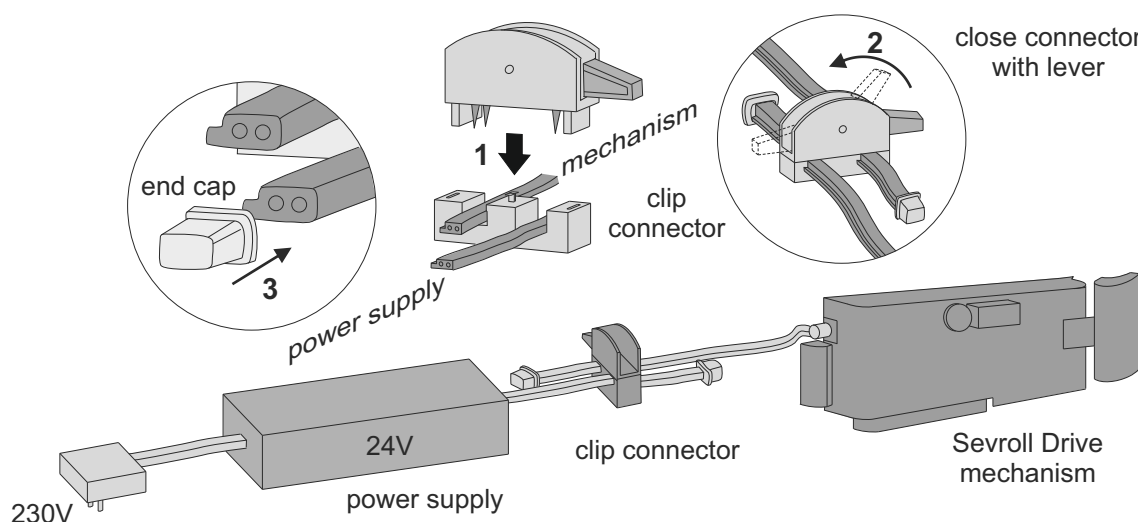
Fastening plate should be installed on the rear side of the cabinet, in the middle of the drawer height. Plate should be level.



Fastening plate dimensions

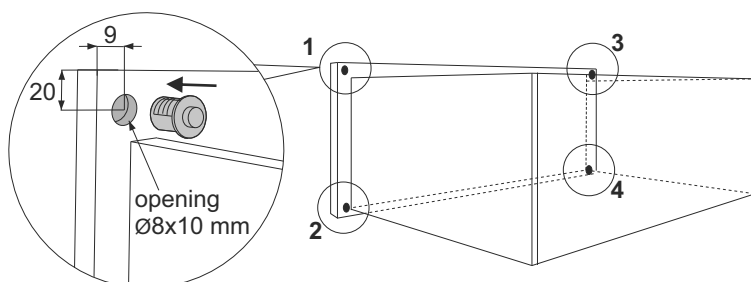


Connecting Sevroll Drive mechanism to power supply with help of clip connector

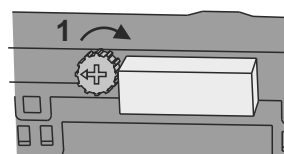


Install the power supply cable ends and mechanism in clip connector (1). Close clip connector using lever (2). Insert end caps onto the ends of cables (3). **Correctly installed unit can be connected to power supply.**

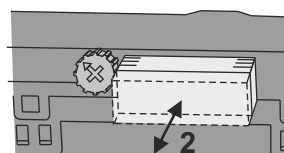
Installation of bumpers to the drawer front



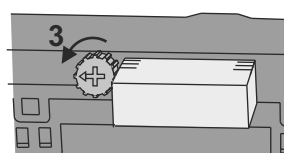
unblock push button



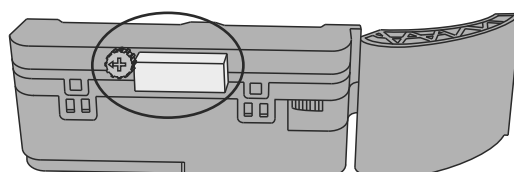
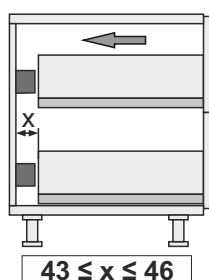
push out the push button



block push button



Regulation/Adjustment of push button protrusion which activates Sevroll Drive mechanism



Attention! Should the activating push button be pressed more than 10 times within 1 minute, the mechanism will block itself for 1 minute.