



LINE

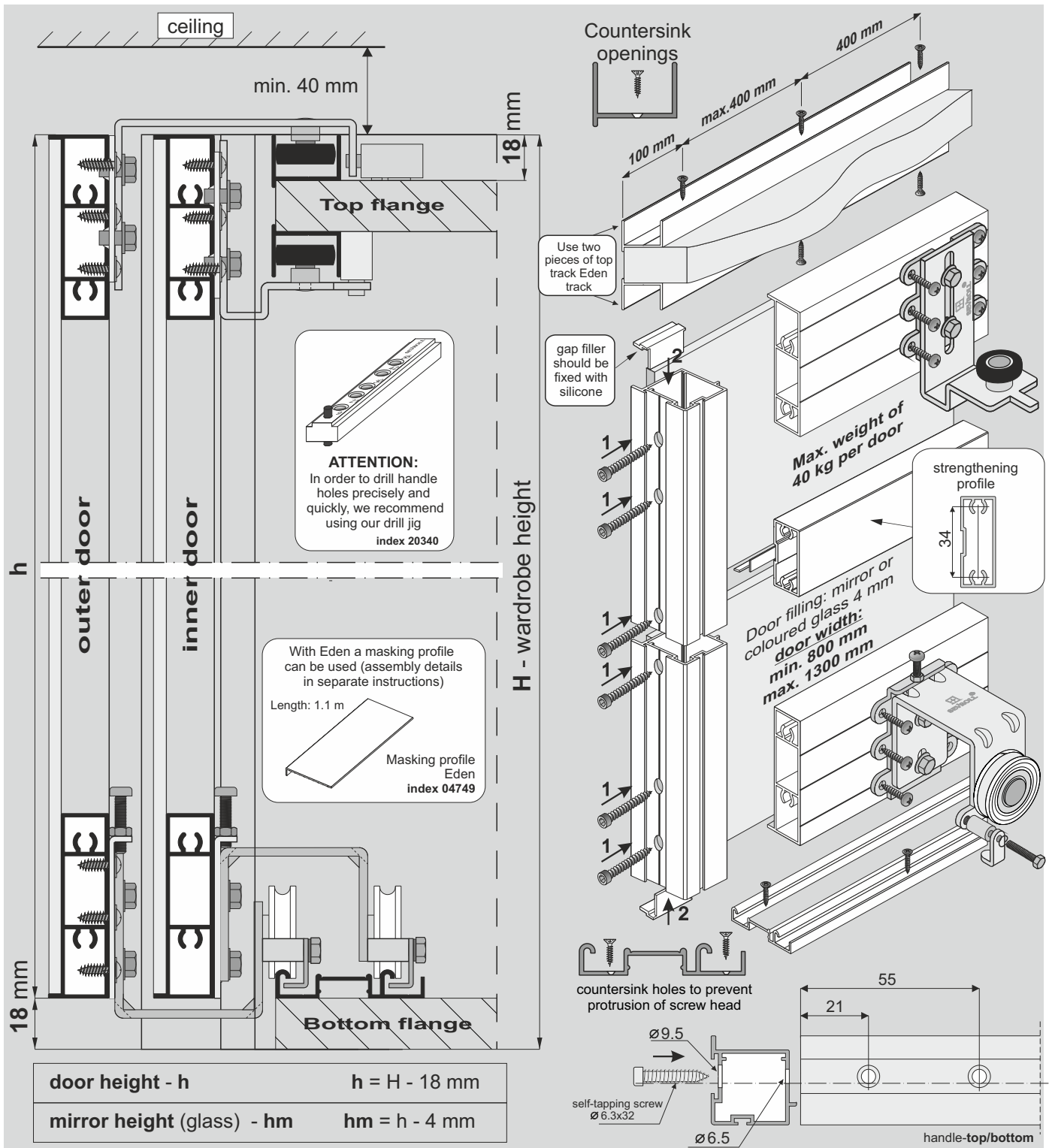
Pax

SYSTEM

EDEN 4 – 3 door wings



SEVROLL®



door height - h

 $h = H - 18 \text{ mm}$

mirror height (glass) - hm

 $hm = h - 4 \text{ mm}$

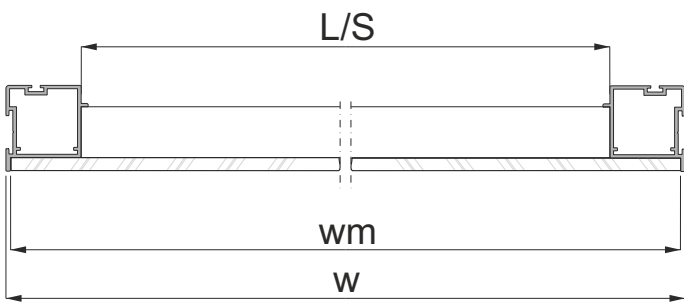
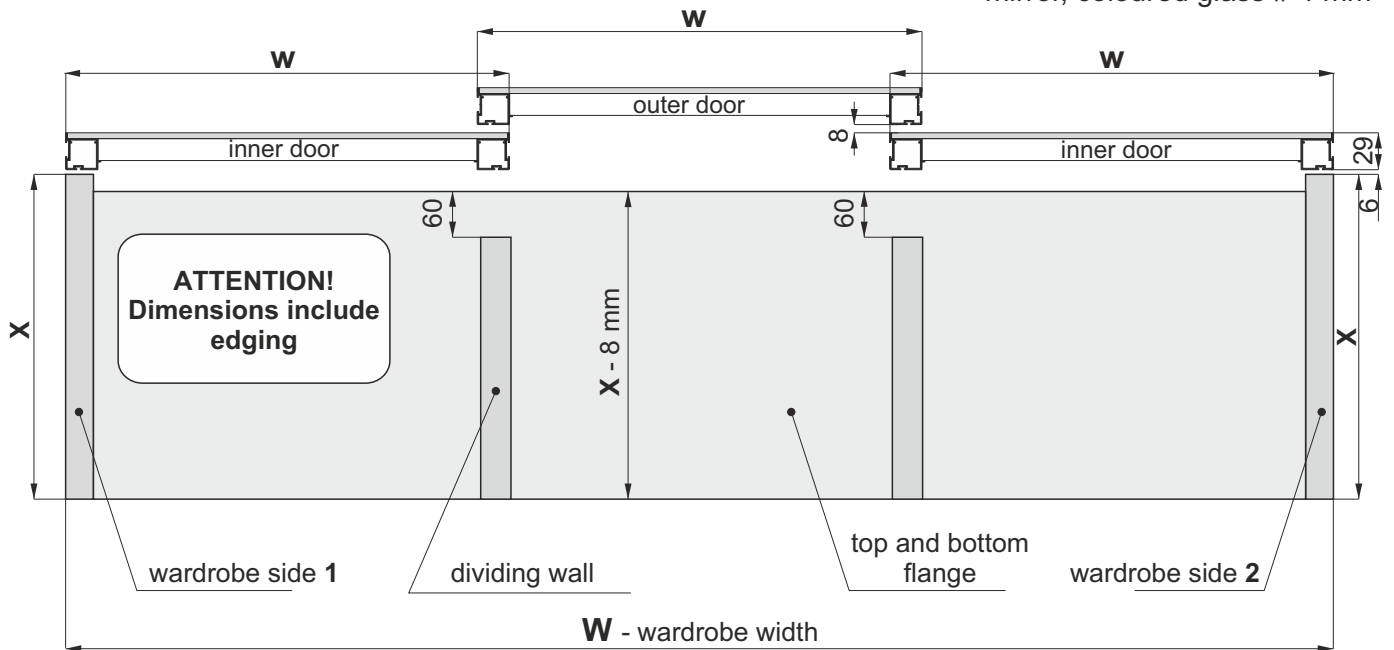
COMPONENTS

Handle Pax L: 2.70 m, 3.00 m Anti-dust brush (inserted) 4.8 x 6 mm Textile door stop (inserted) 14 x 4 mm	Gap filler Pax 12 pcs	Horizontal profile Eden L: 1.70 m, 2.35 m, 3.00 m	Set for sliding door Eden - 2 door wings (inner and outer) x2 x2 x2 x2 x4 x4 x4 x2 screw 3.5x20 x 4 screw M4x20 x 4 self-tapping screw 3.9x13 x 48 spring washer 4 x 4	Set for third door Eden - 1 inner door x2 x2 x1 x2 x2
Bottom track Gemini-Decor II L: 1.70 m, 2.35 m, 3.00 m, 4.05 m, 6.00 m 53	Top track Eden L: 1.70 m, 2.35 m, 3.00 m, 6.00 m 24	(A) Strengthening profile (B) Spacer profile 04 L: 3.00 m L: 3.00 m	Soft-close SV25 MINI (index: 20359-SV) x4 or SV40 MINI (index: 20260-SV) Central SV25 (20360-BL) or Central SV40 (20297-BL) x1	

You must remember to purchase self-tapping screws to construct each door (min. 8 screws per door).



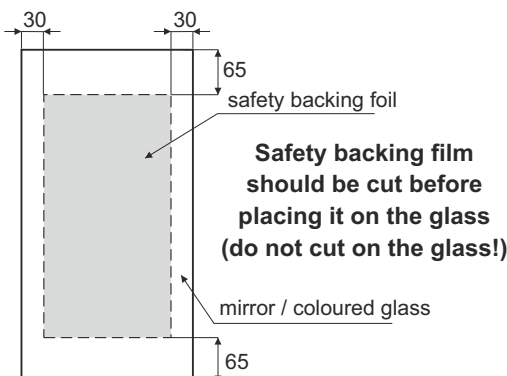
door filling:
- mirror, coloured glass # 4 mm



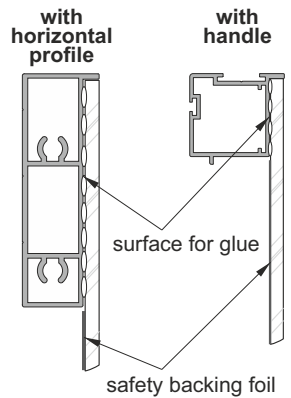
Door width	$w = (W + 50 \text{ mm}) : 3$
Mirror width (glass)	$w_m = w - 4 \text{ mm}$
Horizontal profile Eden length - L	$L/S = w - 50 \text{ mm}$
Strengthening profile length - S	
Spacer profile 04 length	$S + 46 \text{ mm}$

ATTENTION!

Rear mirror / coloured glass surface must be secured with safety backing foil (excluding glass surface glued with mirror adhesive). The edges of glass must be polished.

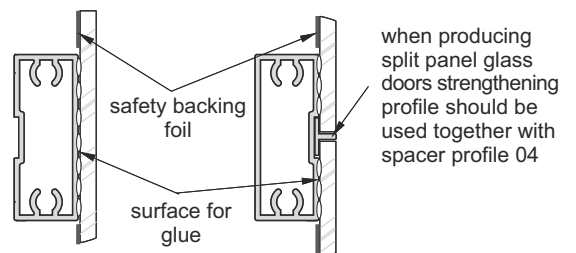


Installation method for fitting mirror or coloured glass 4 mm



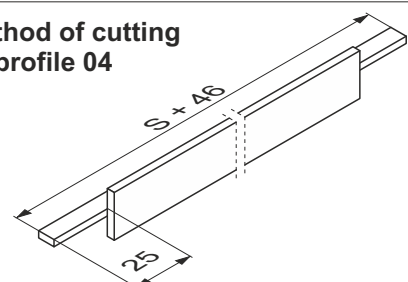
ATTENTION!
Due to the fact that no plinth is needed in system Eden, attention must be paid to the bottom flange being positioned level to the floor. Additionally, when using furniture slides, they should be placed along the whole length so that the bottom flange and bottom track does not bend.

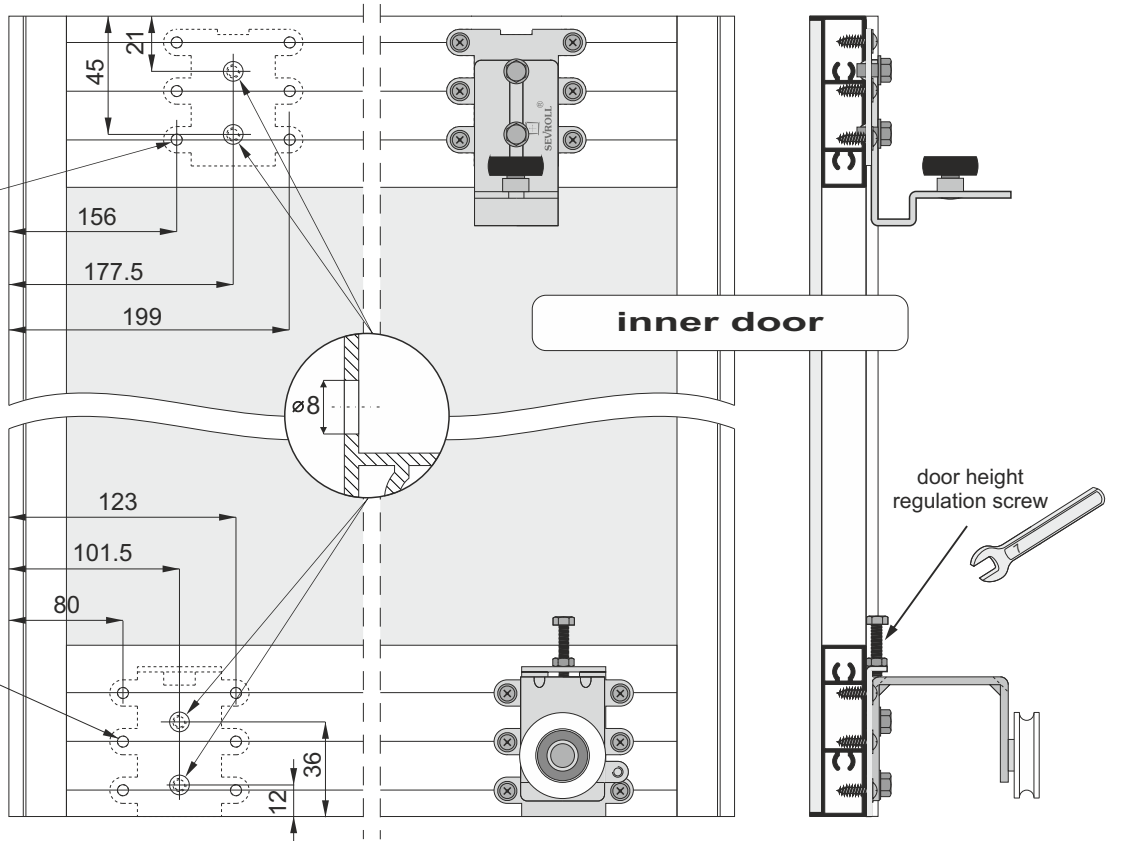
with strengthening profile



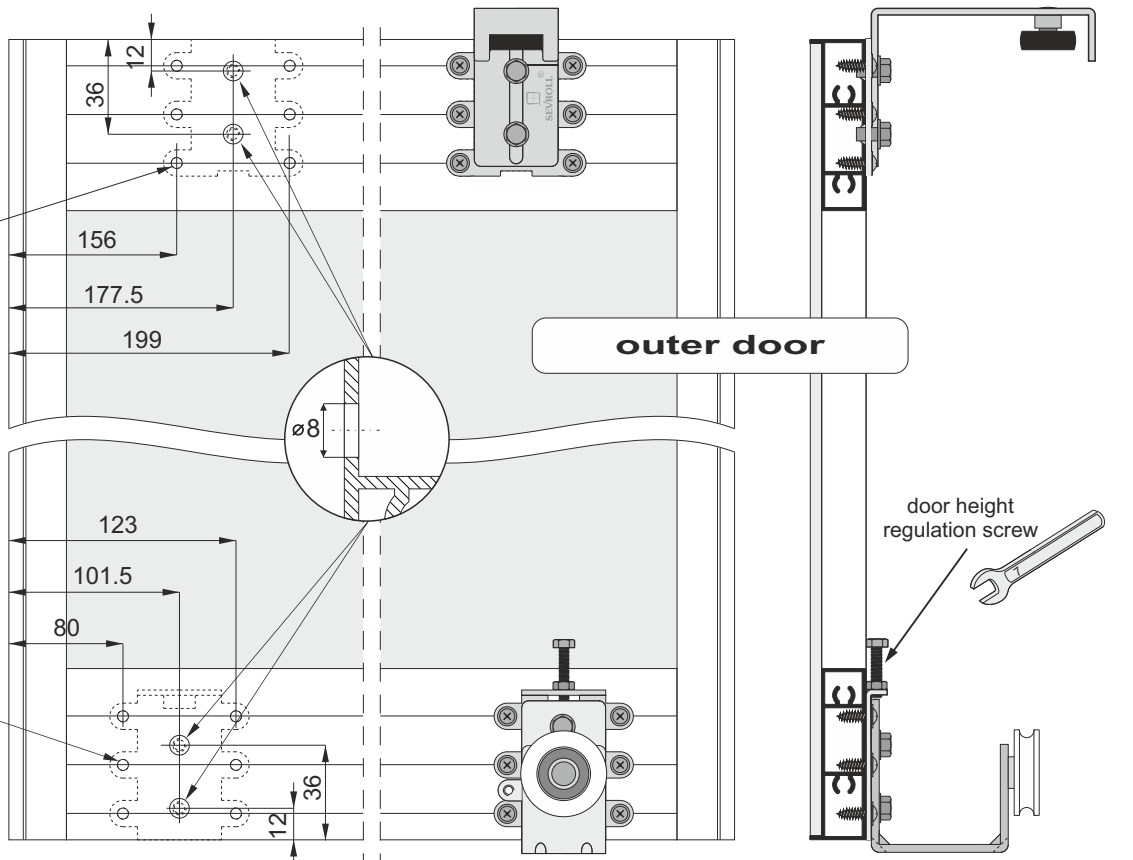
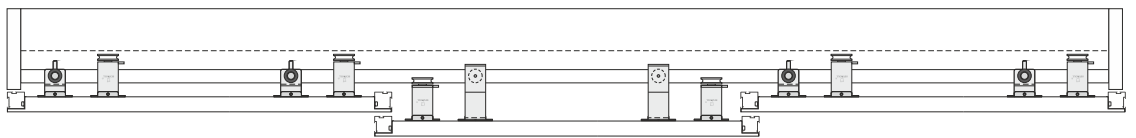
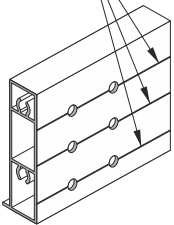
it is recommended that mirror / coloured glass is glued to aluminium profiles with specialist glass adhesive

The method of cutting spacer profile 04



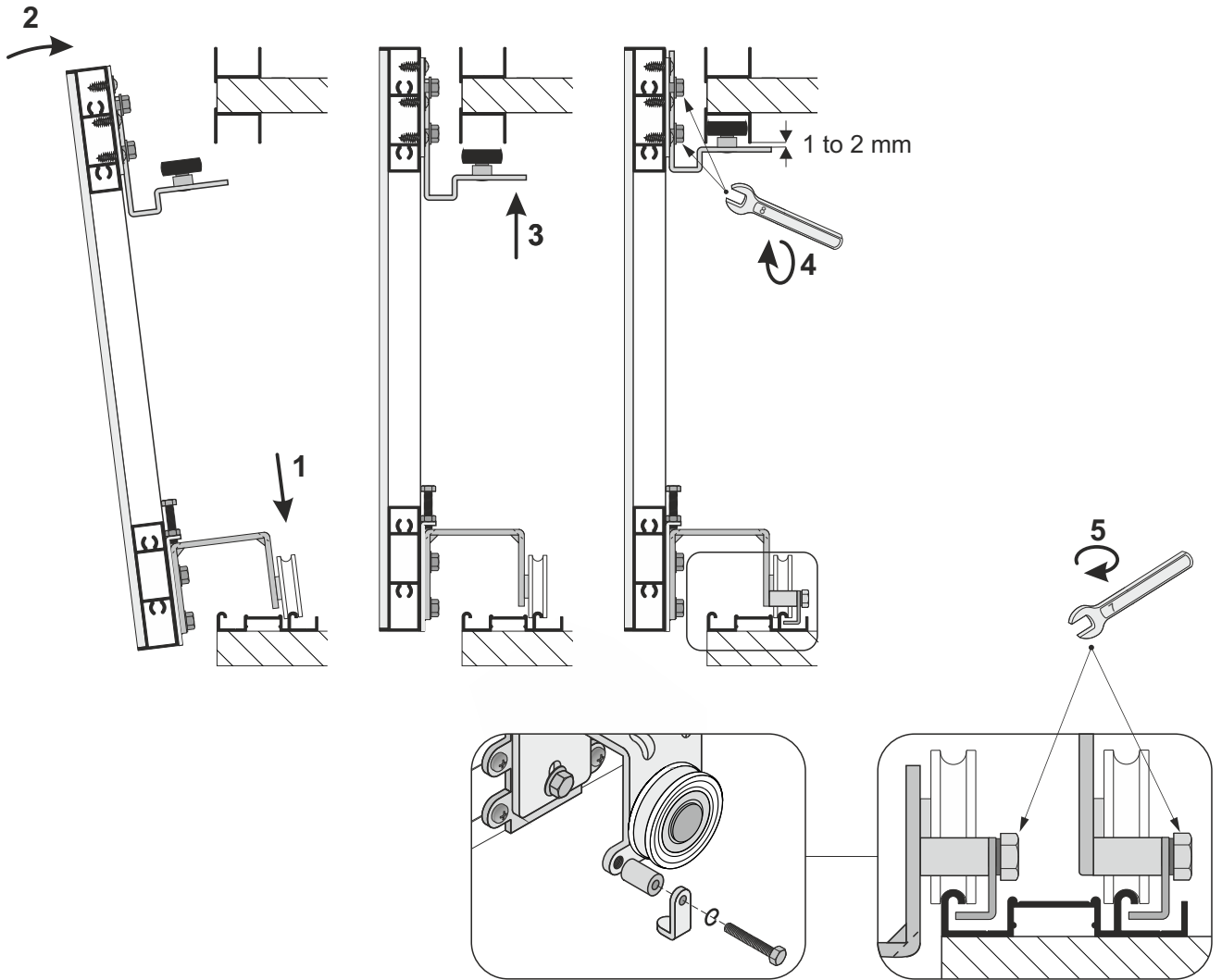


openings $\varnothing 3$ for fastening carriages must be drilled along profile grooves



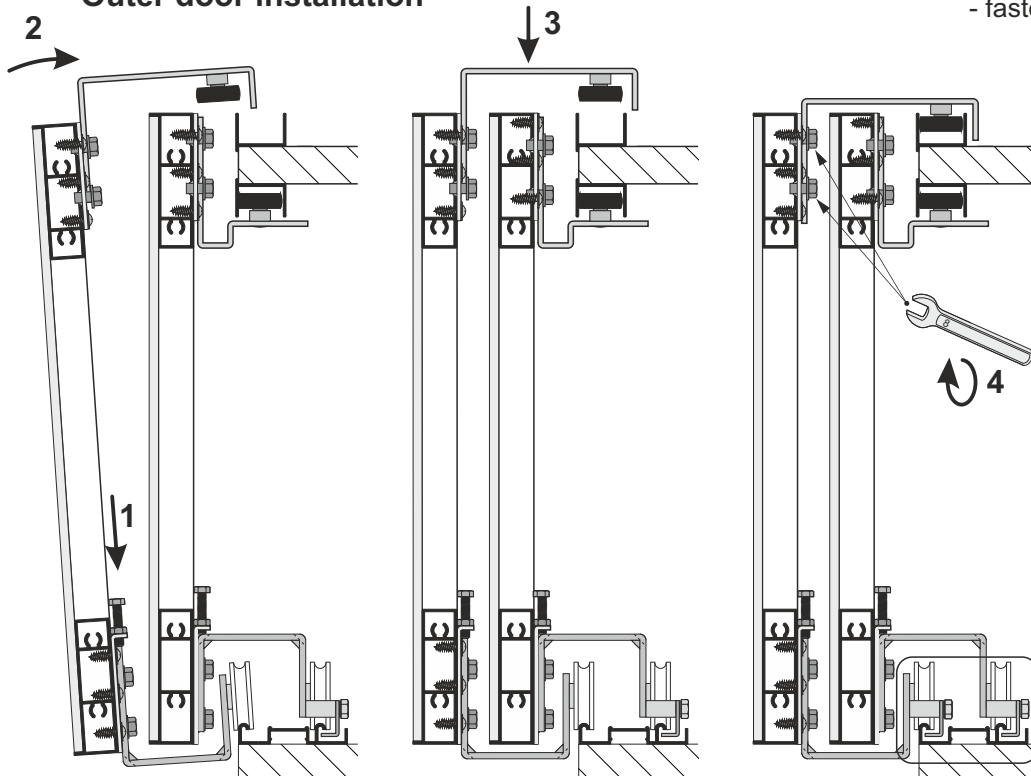


Inner door installation



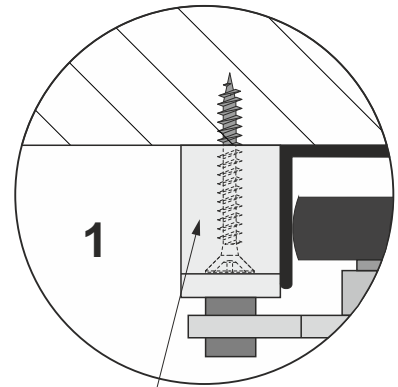
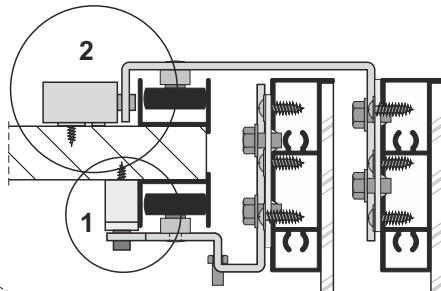
securing catch
- fasten after door assembly

Outer door installation

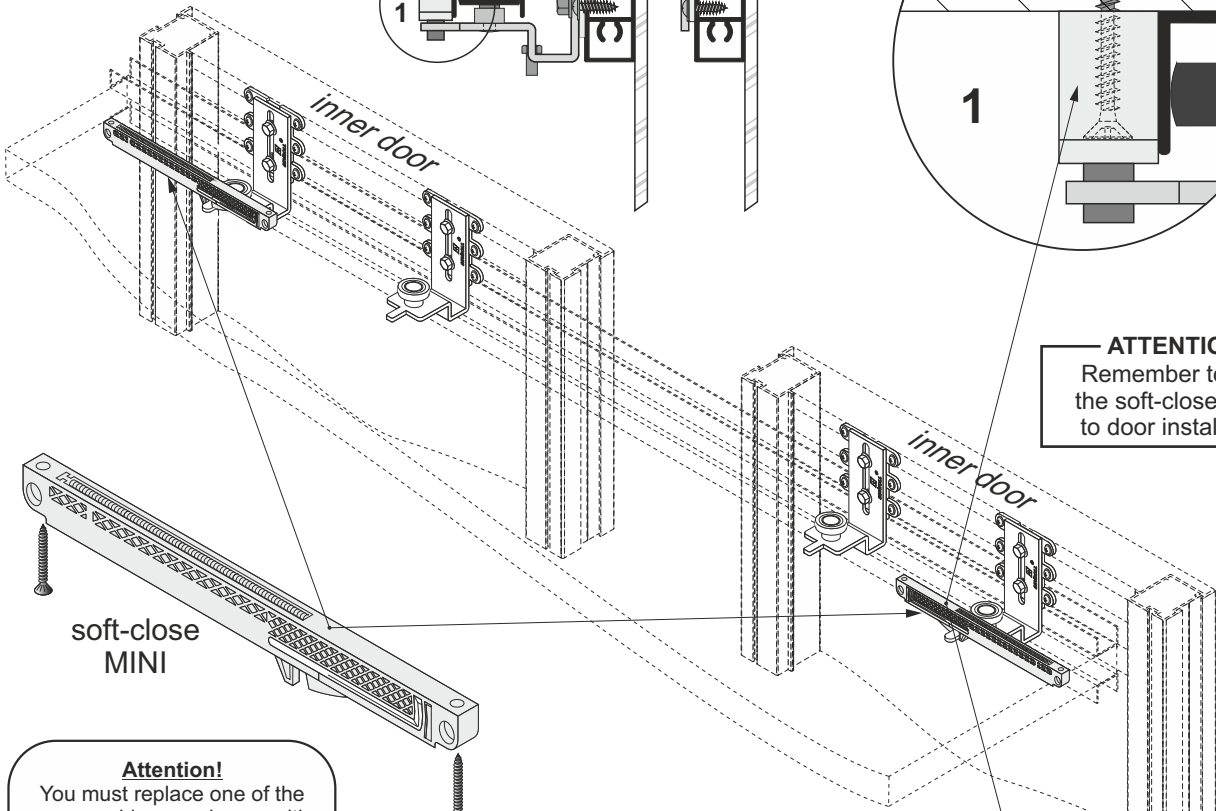




Soft-close installation



ATTENTION!
Remember to arm
the soft-closer prior
to door installation



Attention!
You must replace one of the
upper guides, as shown, with
the replacement found in 'set
for 1 sliding door Eden'

