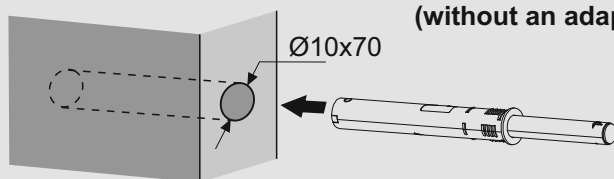
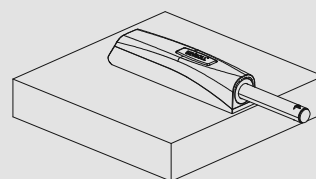
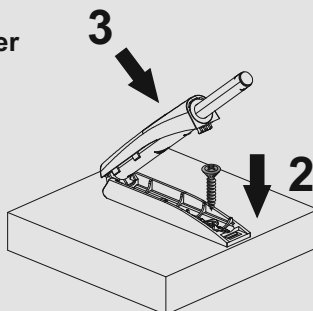
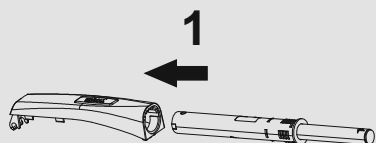


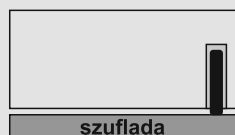
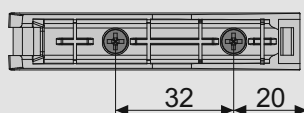
Mounting the bumper
to the hole in the cabinet body
(without an adapter)



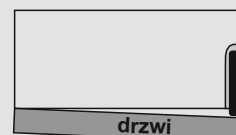
Mounting the bumper in the adapter



Fastening of adapter
to wardrobe



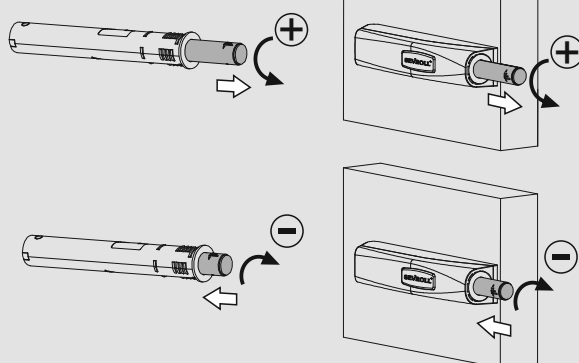
Fixing to drawer



Fixing to door

Regulation

Gap regulation

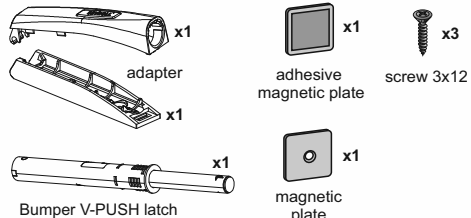


Door gap

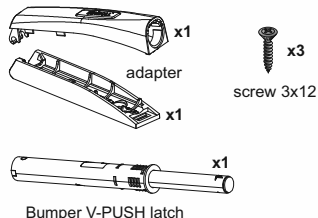
2÷3 mm

COMPONENTS

Bumper V- PUSH latch with adapter,
20N or 30N, with magnetic plate



Bumper V- PUSH latch with adapter,
30N, with silicone plate



Bumper V- PUSH latch,
30N, with silicone plate

