

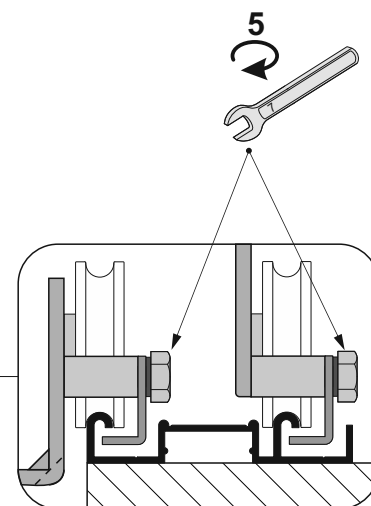
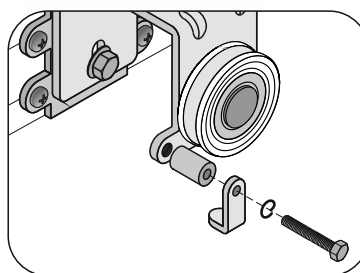
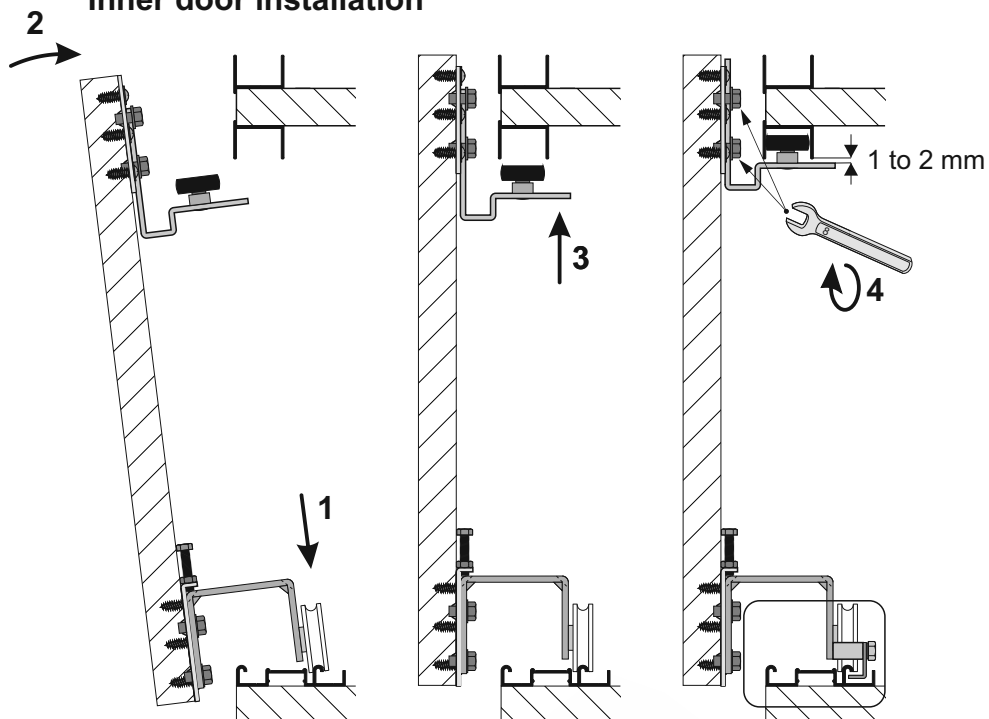


SYSTEM

EDEN 18 BOARD – 3 door wings

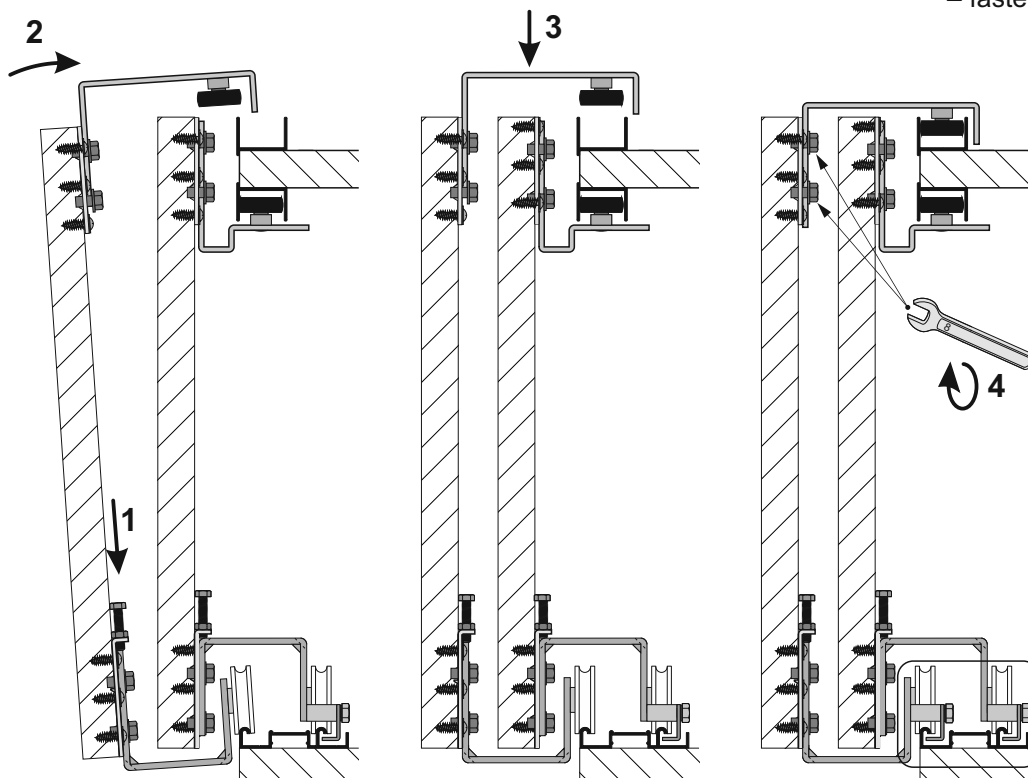
SEVROLL®

Inner door installation



securing catch
– fasten after door assembly

Outer door installation



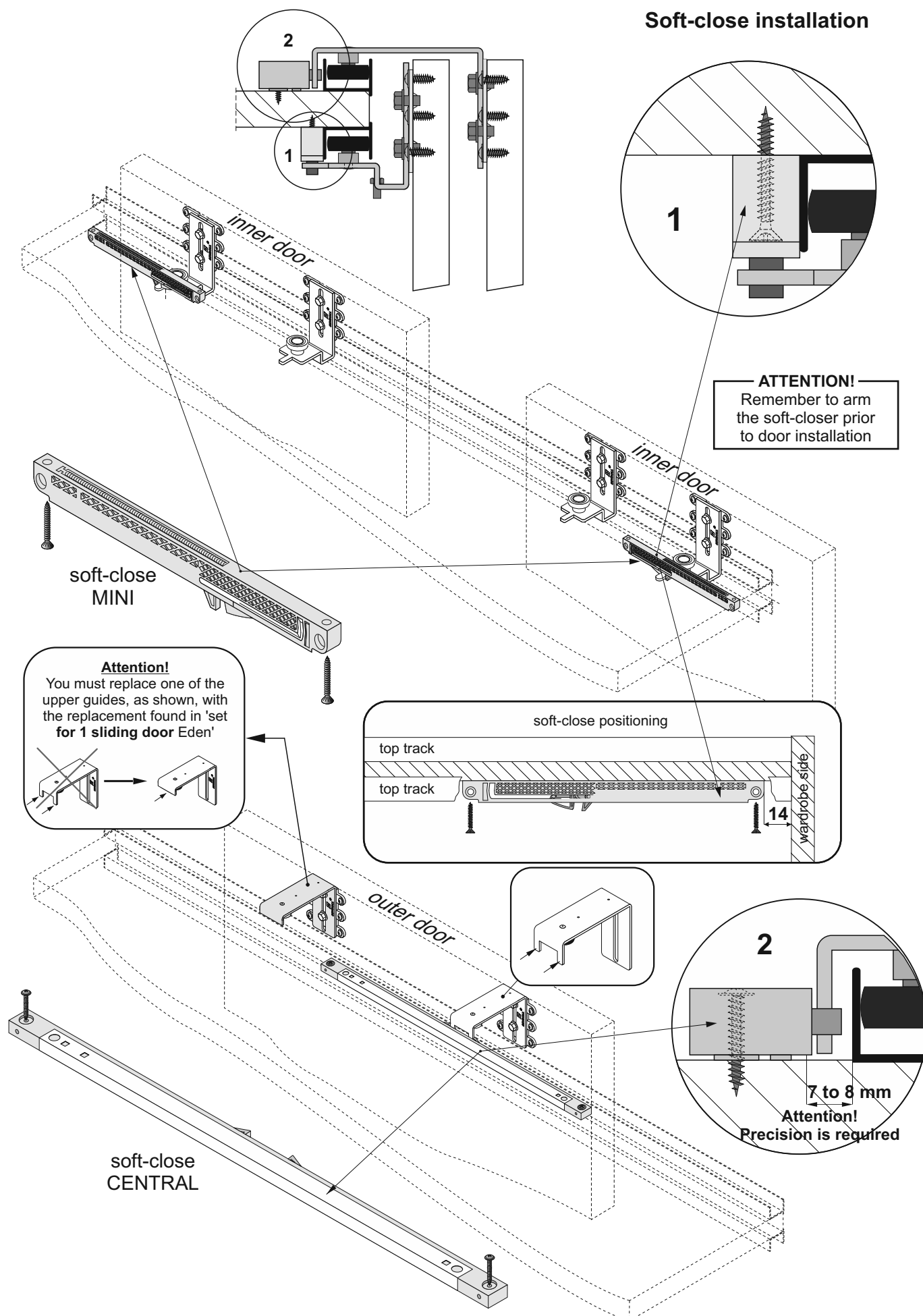


SYSTEM

EDEN 18 BOARD – 3 door wings

SEVROLL®

Soft-close installation





SYSTEM

EDEN 18 BOARD – 3 door wings

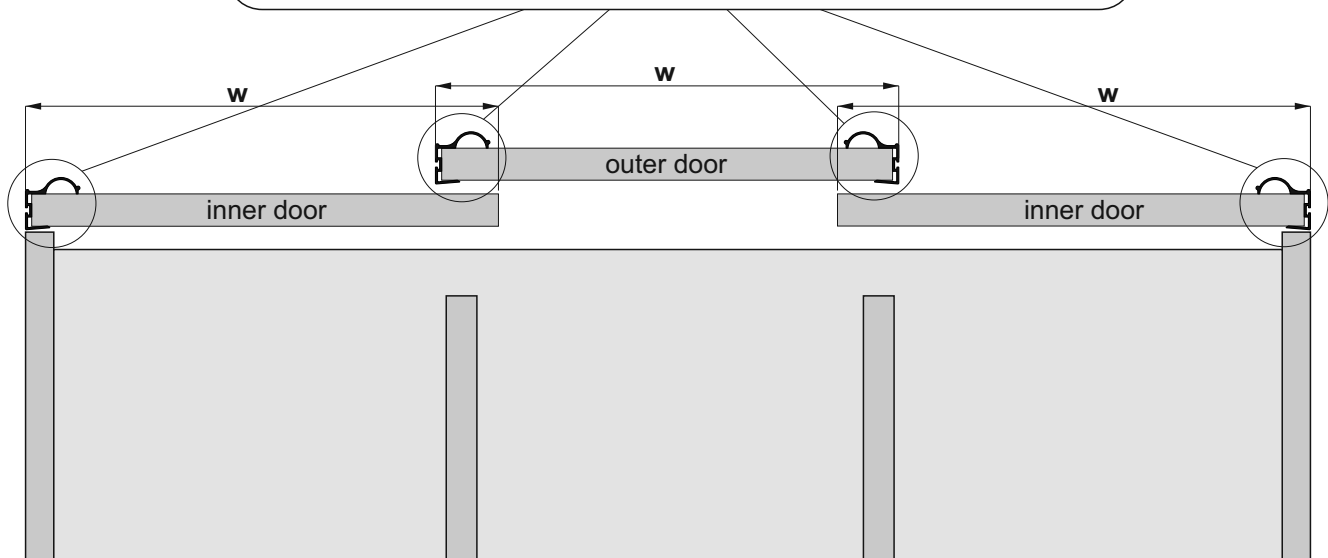
SEVROLL®

ATTENTION! With system **Eden Board** for use with **18 mm** board
you can use handle profiles from our **Gemini 18** range.

Inner door/s - 1 handle

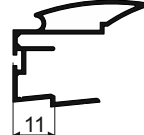

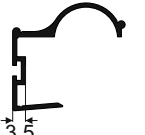
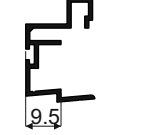
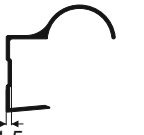
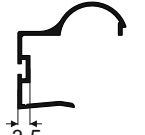
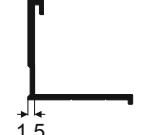
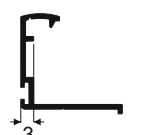
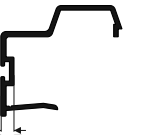
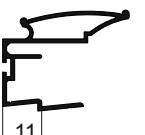

Outer door - 2 handles

(Door width calculations change)



door width	- w	$w = (W + 72 \text{ mm}) : 3$
board width (outer door)	- wp_o	$wp_o = w - 2x$
board width (inner door)	- wp_i	$wp_i = w - x$

The value of **x** depends on the handle profile used

 Alfa $x = 11 \text{ mm}$	 Beta $x = 1.5 \text{ mm}$	 Factor $x = 3.5 \text{ mm}$	 Faworyt $x = 9.5 \text{ mm}$
 Focus $x = 1.5 \text{ mm}$	 Focus II $x = 3.5 \text{ mm}$	 Secret Line $x = 1.5 \text{ mm}$	 Slim Line $x = 3 \text{ mm}$
 Universal $x = 3.5 \text{ mm}$	 Victoria $x = 11 \text{ mm}$	 Arte GM $x = 16 \text{ mm}$	

Carriage installation

