



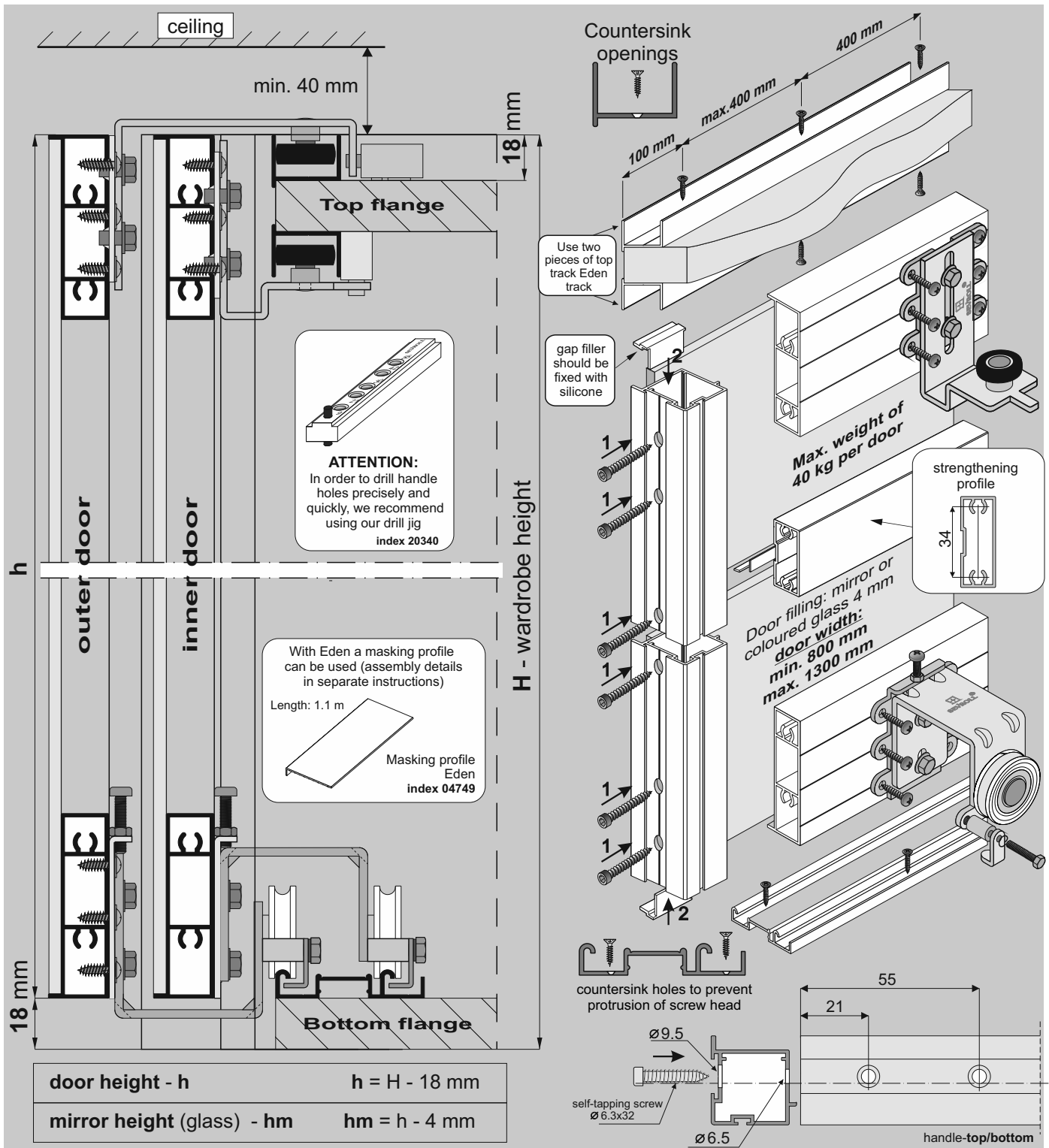
LINE

Pax

SYSTEM

EDEN 4 – 3 door wings

SEVROLL



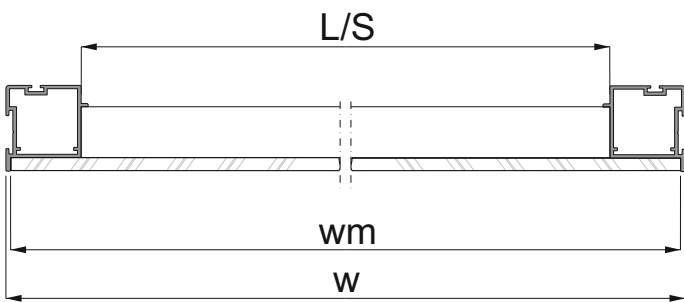
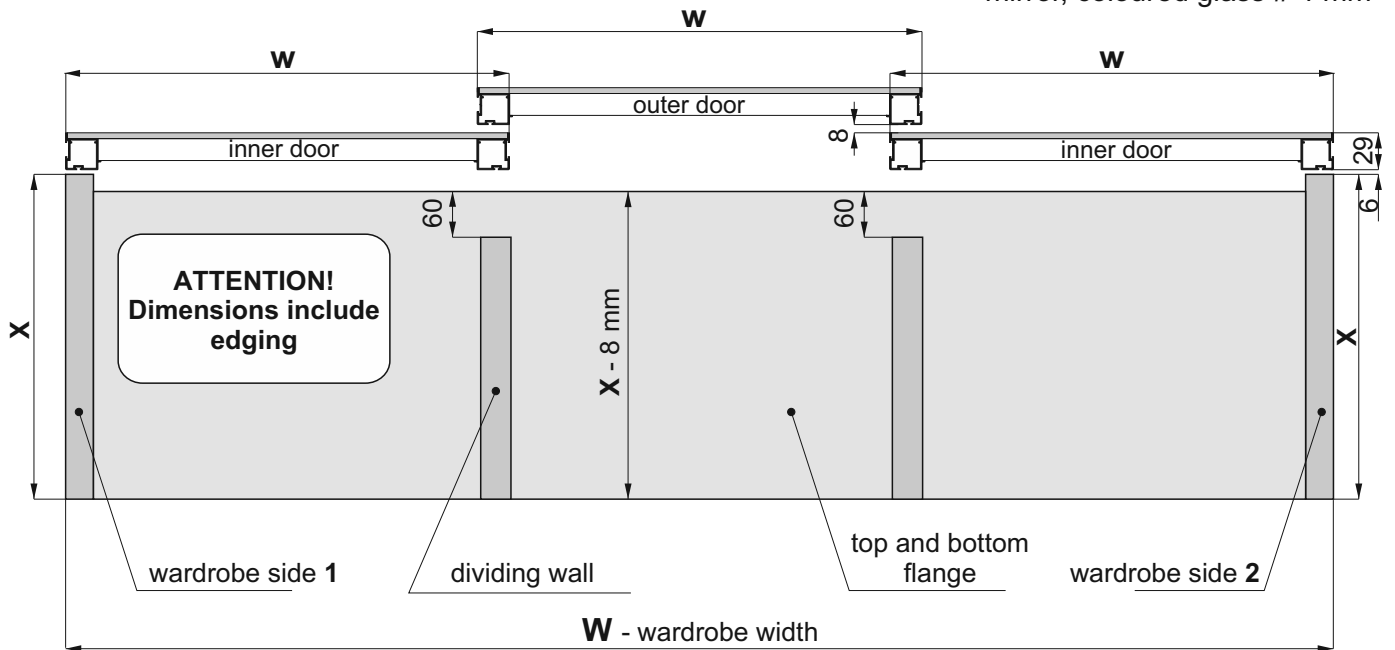
## COMPONENTS

<b>Handle Pax</b> L: 2.70 m, 3.00 m Anti-dust brush (inserted) 4.8 x 6 mm Textile door stop (inserted) 14 x 4 mm	<b>Gap filler Pax</b> 12 pcs	<b>Horizontal profile Edén</b> L: 1.70 m, 2.35 m, 3.00 m	<b>Set for sliding door Edén - 2 door wings (inner and outer)</b> x2 x2 x2 x2 x4 x4 x2	<b>Set for third door Edén - 1 inner door</b> x2 x2 x1 x2 x2
<b>Bottom track Gemini-Decor II</b> L: 1.70 m, 2.35 m, 3.00 m, 4.05 m, 6.00 m 53	<b>Top track Edén</b> L: 1.70 m, 2.35 m, 3.00 m, 6.00 m 24	<b>(A) Strengthening profile</b> <b>(B) Spacer profile 04</b> L: 3.00 m L: 3.00 m	screw 3.5x20 x4 screw M4x20 x4 self-tapping screw 3.9x13 x48 spring washer 4 x4	<b>Soft-close</b> SV25 MINI (index: 20359-SV) or SV40 MINI (index: 20260-SV) x4 Central SV25 (20360-BL) or Central SV40 (20297-BL) x1

You must remember to purchase self-tapping screws to construct each door (min. 8 screws per door).

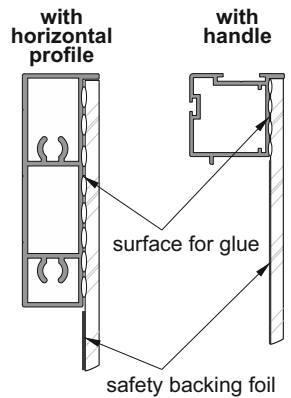


door filling:  
- mirror, coloured glass # 4 mm



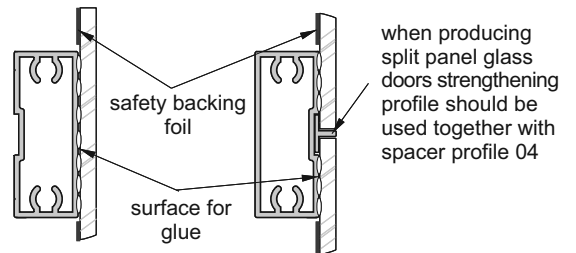
Door width	$w = (W + 50 \text{ mm}) : 3$
Mirror width (glass)	$w_m = w - 4 \text{ mm}$
Horizontal profile Eden length - L	$L/S = w - 50 \text{ mm}$
Strengthening profile length - S	
Spacer profile 04 length	$S + 46 \text{ mm}$

Installation method for fitting mirror or coloured glass 4 mm



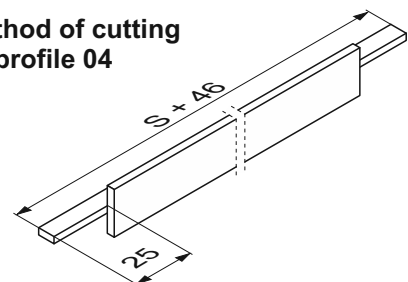
**ATTENTION!**  
Due to the fact that no plinth is needed in system Eden, attention must be paid to the bottom flange being positioned level to the floor. Additionally, when using furniture slides, they should be placed along the whole length so that the bottom flange and bottom track does not bend.

with strengthening profile



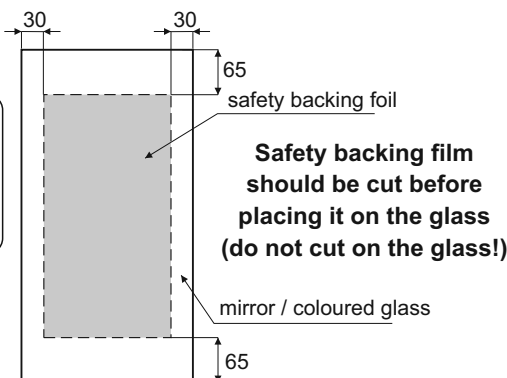
it is recommended that mirror / coloured glass is glued to aluminium profiles with specialist glass adhesive

The method of cutting spacer profile 04



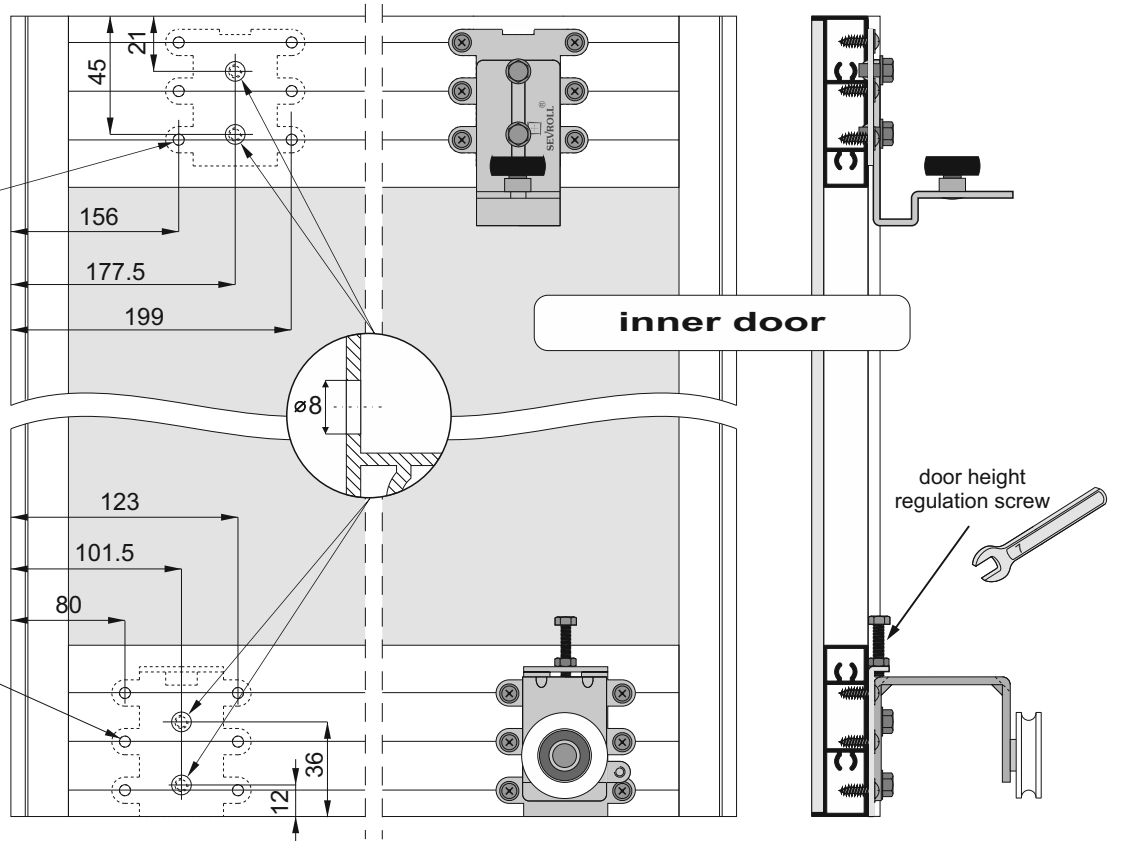
**ATTENTION!**

Rear mirror / coloured glass surface must be secured with safety backing foil (excluding glass surface glued with mirror adhesive).  
The edges of glass must be polished.

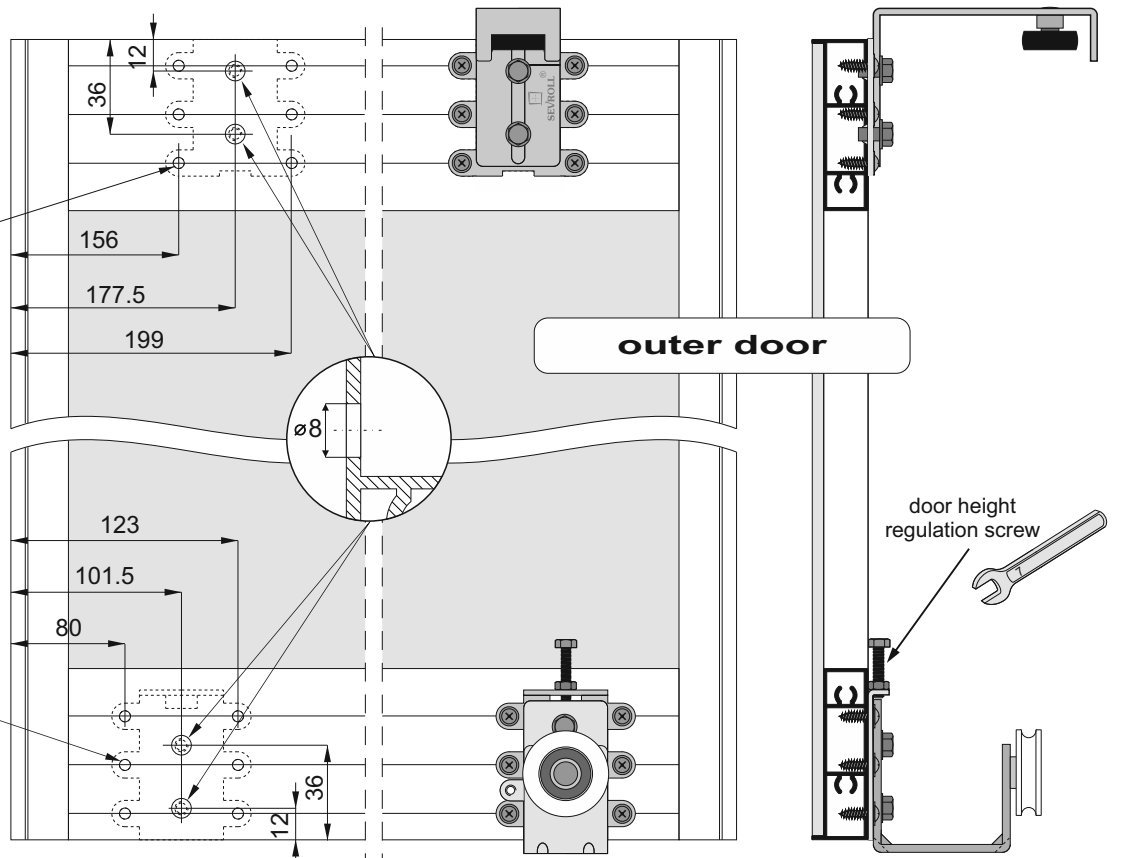
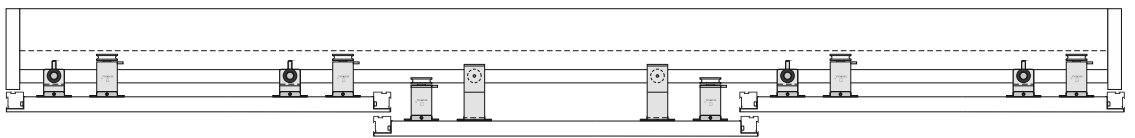
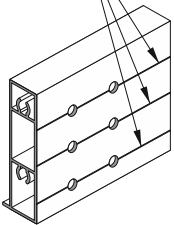


**ATTENTION**

In Eden system with doors taller than 2 m it is possible for the door wing to bow +/- 5 mm

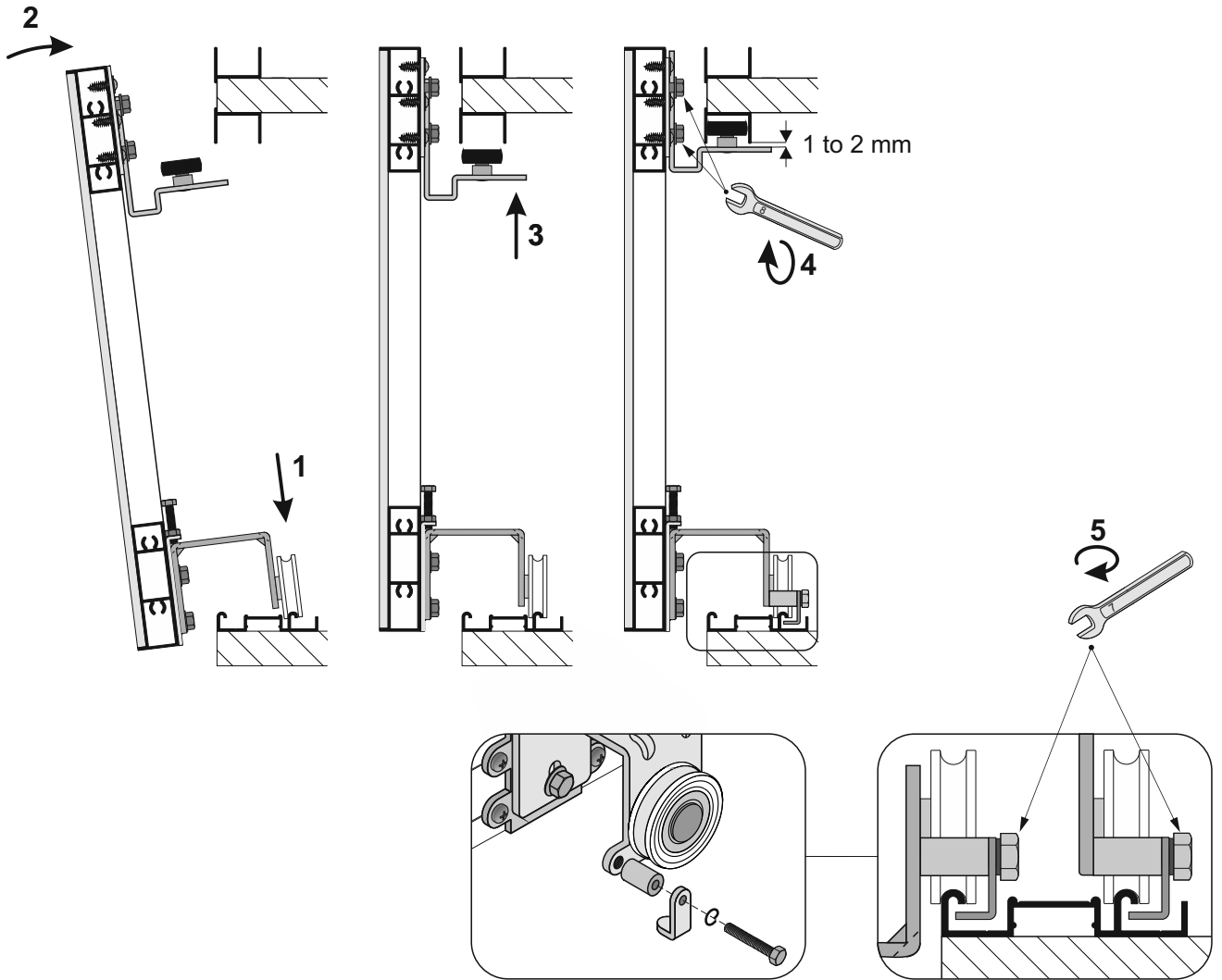


openings  $\varnothing 3$  for fastening carriages must be drilled along profile grooves



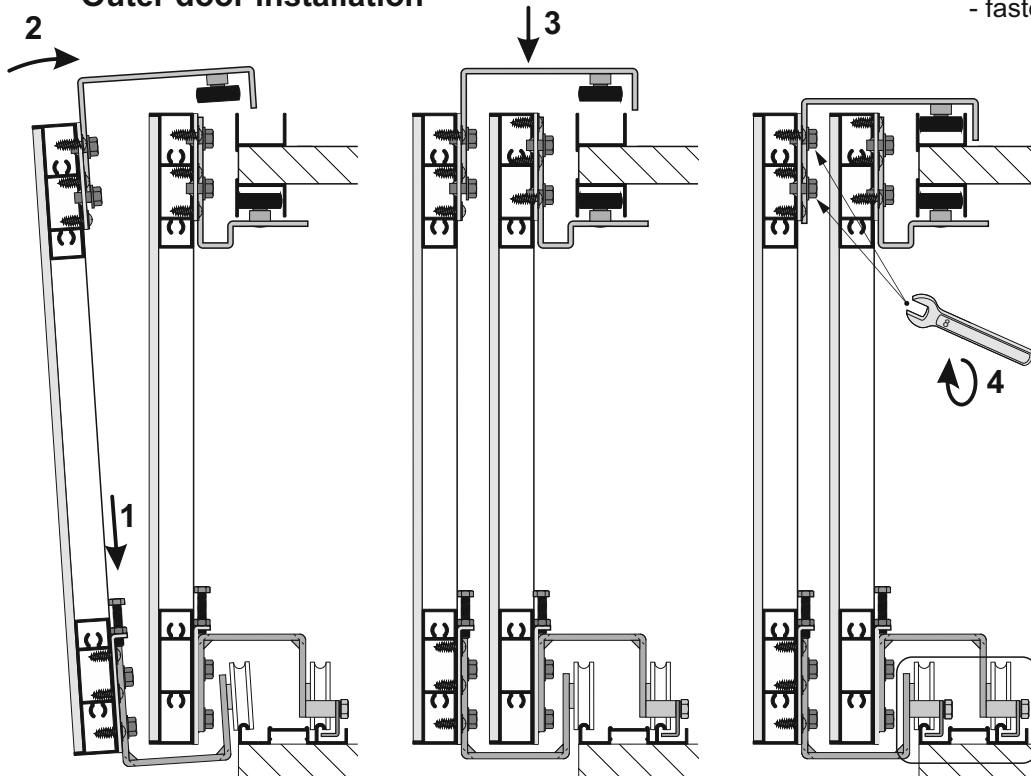


### Inner door installation



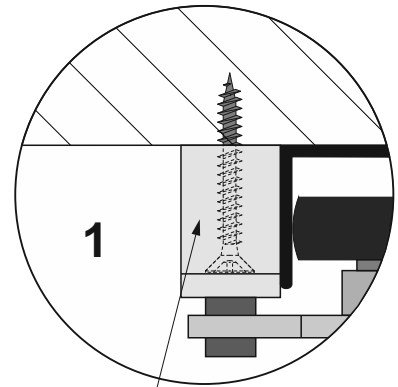
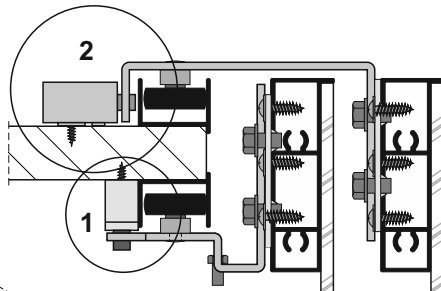
securing catch  
- fasten after door assembly

### Outer door installation

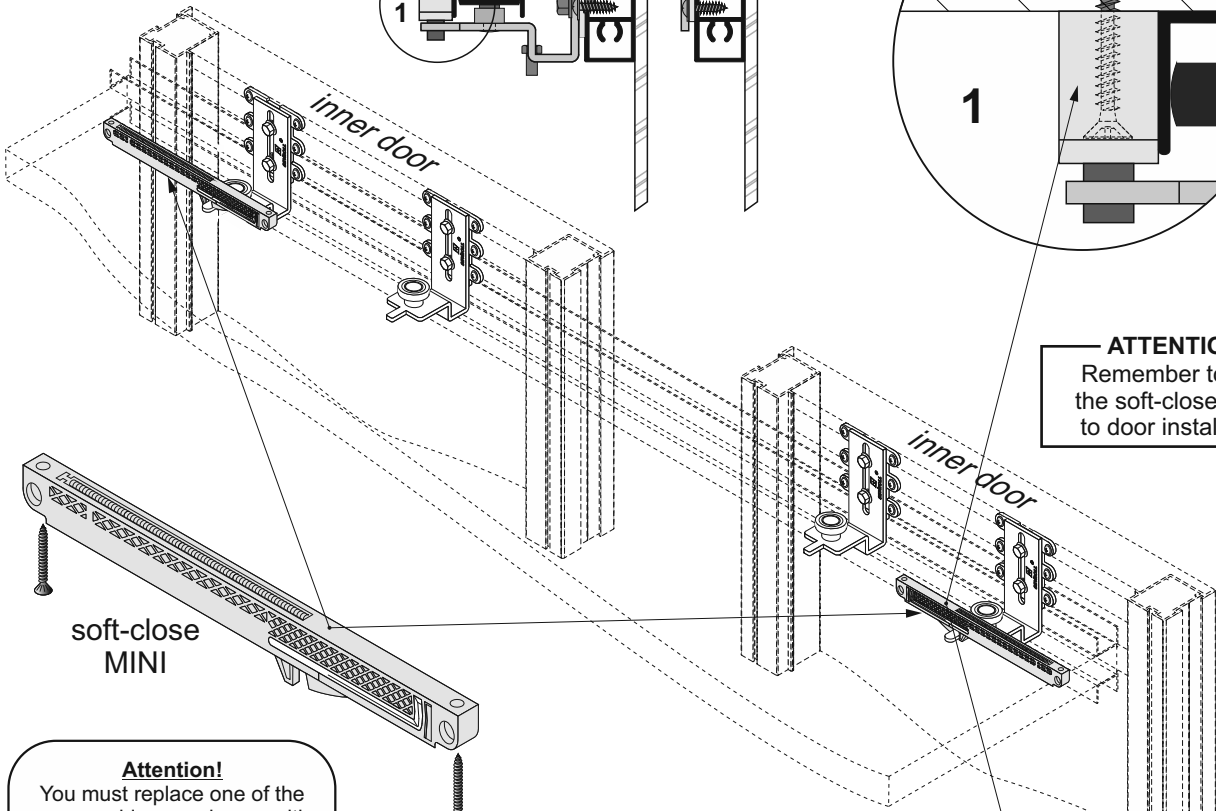




Soft-close installation



**ATTENTION!**  
Remember to arm  
the soft-closer prior  
to door installation



**Attention!**  
You must replace one of the  
upper guides, as shown, with  
the replacement found in 'set  
for 1 sliding door Eden'

