

FURNITURE ACCESSORIES



SEVROLLBOX SLIM drawers

Soft-close thin walled drawer box systems

2



Ball bearing slides

Full extension ball bearing slides with soft-close

16



Soft-close clip-on hinges

Our full offer of furniture hinges

18



Furniture legs

Adjustable furniture legs suitable for heavy loads

30

Sevroll System's offer includes high quality furniture accessories.

These are innovative solutions facilitating the arrangement of space and increasing the functionality of furniture.

SEVROLL's furniture accessories came as a response to the growing demand for a high quality, aesthetically pleasing products, whilst maintaining the style and functionality of arranged spaces.

- **SEVROLL's high quality** furniture accessories increase the longevity of the furniture itself and increasing its resistance during everyday use
- **Aesthetics** and the modern design of components provide individual character to all arrangements
- **The functionality** of SEVROLL's furniture accessories ensure optimal space management



SEVROLLBOX SLIM DRAWERS

Innovative thin walled drawer box system



Sevroll drawers are reliable and modern

SEVROLLBOX SLIM is an innovative system for the installation of drawers. Its design, look and colour range allow you to create a modern drawer. The 3 heights of drawer sides: 84 mm, 167 mm and 199 mm (available in white and graphite finishes) have a perfect rectangular shape, taking up less area inside the drawer and maximizing usable space. Silent and fully extendable soft-close guides are comfortable to use and offer unlimited access to the drawer. The drawer fronts can be adjusted vertically and horizontally giving perfect alignment within the carcass. Drawer front adjustment is made from inside the drawer, making it easy to adjust and easy to remove. SEVROLLBOX SLIM has a high load capacity of 40 kg and a wide range of drawer depths (270-550 mm) allowing you to use this product in any interior.



CHARACTERISTICS

► Application	Drawer system
► Filling (bottom / back)	Board 16 mm
► Available lengths	270, 300, 350, 400, 450, 500, 550 mm
► Max. door load	40 kg
► Available wall heights	84, 167, 199 mm
► Construction	Metal
► Number of test cycles	50,000
► Color	White RAL 9003, graphite RAL 7015
► Sales programme	Drawers are sold in sets

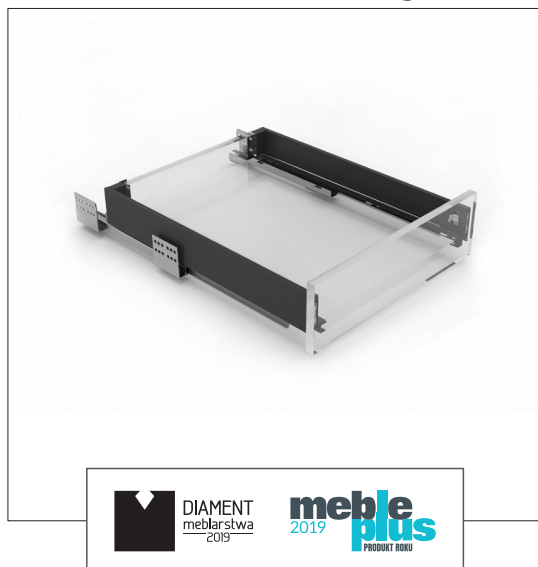
USAGE

► Carcass furniture, kitchens, walk-in wardrobes, wardrobes

DRAWERS SEVROLLBOX SLIM



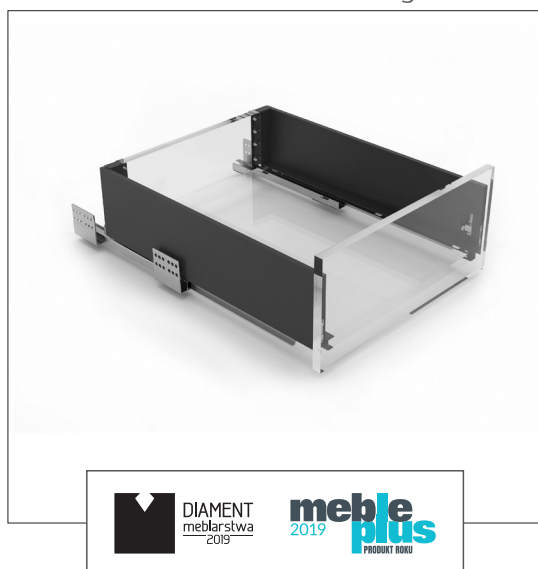
Drawer SEVROLLBOX SLIM height = 84 mm



CODE	COLOUR	LENGTH (MM)	COLLECTIVE PACKAGING	PRICED PER
222892	WHITE	270	6	set
222913	GRAPHITE	270	6	set
222893	WHITE	300	6	set
222914	GRAPHITE	300	6	set
222894	WHITE	350	6	set
222915	GRAPHITE	350	6	set
222895	WHITE	400	6	set
222916	GRAPHITE	400	6	set
222896	WHITE	450	6	set
222917	GRAPHITE	450	6	set
222897	WHITE	500	6	set
222918	GRAPHITE	500	6	set
222898	WHITE	550	6	set
222919	GRAPHITE	550	6	set

i Included: 2 drawer runners, 2 drawer sides, 2 drawer front catches, 2 rear wall connectors and two adjustment covers

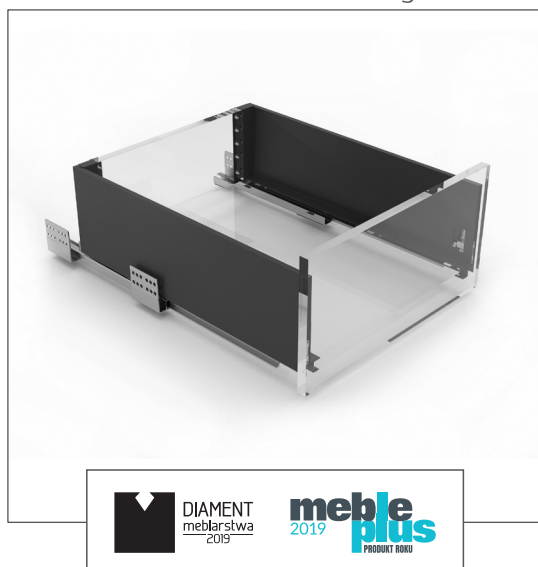
Drawer SEVROLLBOX SLIM height = 167 mm



CODE	COLOUR	LENGTH (mm)	COLLECTIVE PACKAGING	PRICED PER
222899	WHITE	270	5	set
222920	GRAPHITE	270	5	set
222900	WHITE	300	5	set
222921	GRAPHITE	300	5	set
222901	WHITE	350	5	set
222922	GRAPHITE	350	5	set
222902	WHITE	400	5	set
222923	GRAPHITE	400	5	set
222903	WHITE	450	5	set
222924	GRAPHITE	450	5	set
222904	WHITE	500	5	set
222925	GRAPHITE	500	5	set
222905	WHITE	550	5	set
222926	GRAPHITE	550	5	set

i Included: 2 drawer runners, 2 drawer sides, 2 drawer front catches, 2 rear wall connectors and two adjustment covers

Drawer SEVROLLBOX SLIM height = 199 mm



CODE	COLOUR	LENGTH (mm)	COLLECTIVE PACKAGING	PRICED PER
222906	WHITE	270	4	set
222927	GRAPHITE	270	4	set
222907	WHITE	300	4	set
222928	GRAPHITE	300	4	set
222908	WHITE	350	4	set
222929	GRAPHITE	350	4	set
222909	WHITE	400	4	set
222930	GRAPHITE	400	4	set
222910	WHITE	450	4	set
222931	GRAPHITE	450	4	set
222911	WHITE	500	4	set
222932	GRAPHITE	500	4	set
222912	WHITE	550	4	set
222933	GRAPHITE	550	4	set

i Included: 2 drawer runners, 2 drawer sides, 2 drawer front catches, 2 rear wall connectors and two adjustment covers

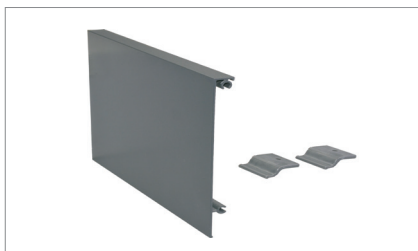


DRAWERS

SEVROLLBOX SLIM

Drawer accessories

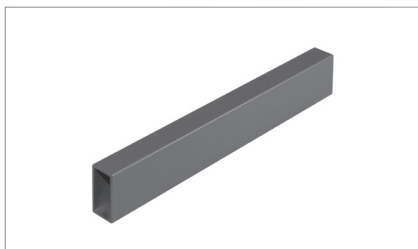
Universal drawer front base profile for internal drawer **SEVROLLBOX SLIM**



CODE	COLOUR	LENGTH (mm)	COLLECTIVE PACKAGING	PRICED PER
04980	WHITE	1200	20	set
04979	GRAPHITE	1200	20	set

i These elements are for producing internal drawer fronts

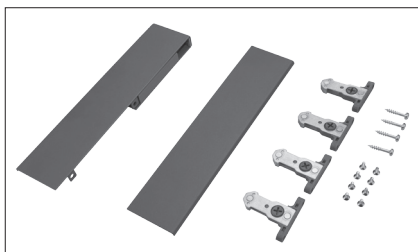
Universal drawer front railing for internal drawer **SEVROLLBOX SLIM**



CODE	COLOUR	LENGTH (mm)	COLLECTIVE PACKAGING	PRICED PER
04975	WHITE	1200	50	item
04974	GRAPHITE	1200	50	item

i These elements are for producing internal drawer fronts

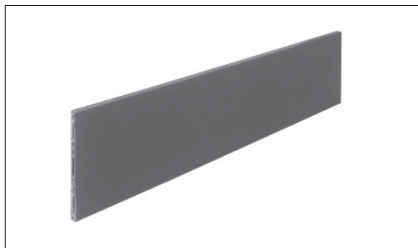
Set for internal drawer **SEVROLLBOX SLIM**



CODE	COLOUR	HEIGHT (mm)	COLLECTIVE PACKAGING	PRICED PER
04971	WHITE	84	50	set
04976	GRAPHITE	84	50	set
04977	WHITE	167	20	set
04972	GRAPHITE	167	20	set
04978	WHITE	199	20	set
04973	GRAPHITE	199	20	set

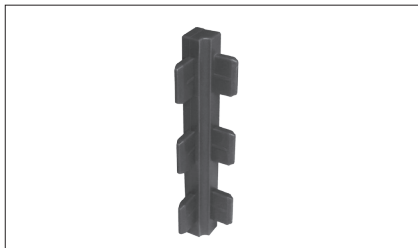
i These elements are for producing internal drawer fronts

Drawer accessories **Dividing wall 60 x 2000 mm**



CODE	COLOUR	HEIGHT (mm)	COLLECTIVE PACKAGING	PRICED PER
222965	WHITE	60	20	item
222955	GRAPHITE	60	20	item
222959	VELVET GREY	60	20	item

Drawer accessories **Two-sided wall connector**



CODE	COLOUR	HEIGHT (mm)	COLLECTIVE PACKAGING	PRICED PER
222966	WHITE	60	10	set
222956	GRAPHITE	60	10	set
222960	VELVET GREY	60	10	set

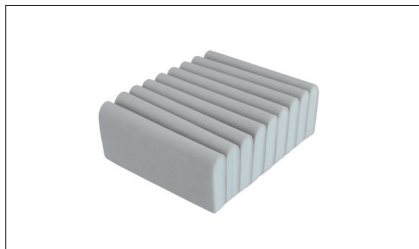
Drawer accessories **Three-sided wall connector**



CODE	COLOUR	HEIGHT (mm)	COLLECTIVE PACKAGING	PRICED PER
222967	WHITE	60	10	set
222957	GRAPHITE	60	10	set
222961	VELVET GREY	60	10	set

Drawer accessories **Four-sided wall connector**

CODE	COLOUR	HEIGHT (mm)	COLLECTIVE PACKAGING	PRICED PER
222968	WHITE	60	10	set
222958	GRAPHITE	60	10	set
222962	VELVET GREY	60	10	set

Drawer accessories **Inlay for earings 120x150x50 mm**

CODE	COLOUR	DIMENSIONS (mm)	COLLECTIVE PACKAGING	PRICED PER
222963	VELVET GREY	120 x 150 x 50	100	item

Drawer accessories **Self-adhesive insert 1000x1500 mm**

CODE	COLOUR	DIMENSIONS (mm)	COLLECTIVE PACKAGING	PRICED PER
222964	VELVET GREY	1500 x 1000	1	roll

i Self-adhesive material for lining drawer interior

Drawer accessories **Steel angle fixing**

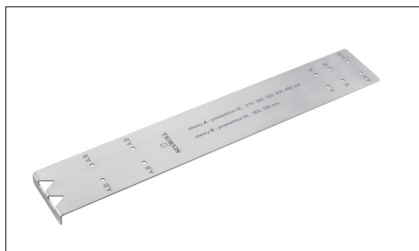
CODE	COLOUR	DIMENSIONS (mm)	COLLECTIVE PACKAGING	PRICED PER
40343	STEEL	12x21x35	40	set

i Designed to strengthen the drawer base

Sevrollbox Slim drawer **front** template

CODE	COLOUR	COLLECTIVE PACKAGING	PRICED PER
05058	STEEL	1	item

i Details on pages 12-13

Sevrollbox Slim template **for guides**

CODE	COLOUR	COLLECTIVE PACKAGING	PRICED PER
05050	STEEL	1	item

i Details on pages 14-15



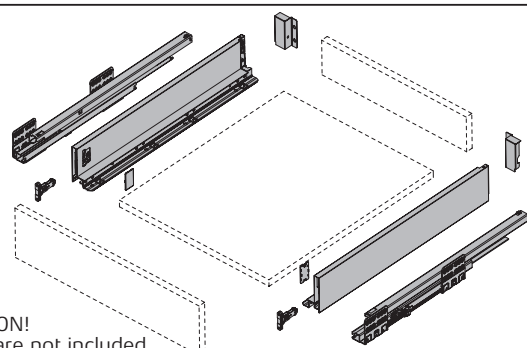
DRAWERS

SEVROLLBOX SLIM



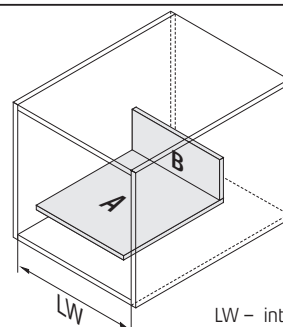
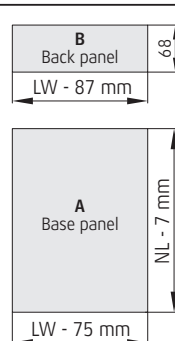
Assembly instructions

Components



ATTENTION!
screws are not included

Cutting dimensions of 16 mm MDF

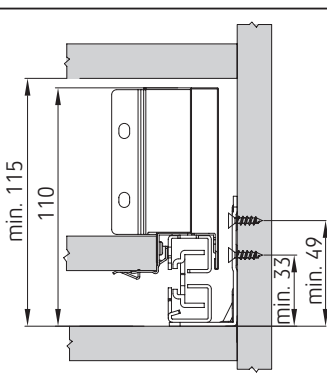


NL: 270 [mm]
300
350
400
450
500
550

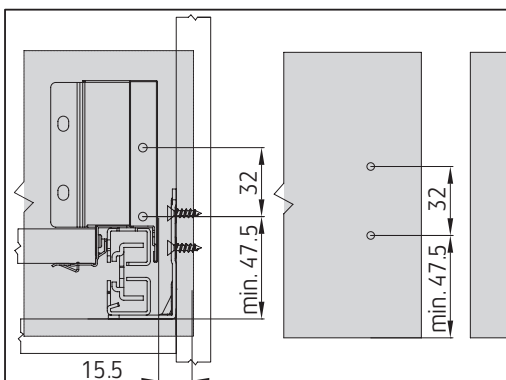
A – Base panel
B – Back panel

LW – internal cabin width
NL – nominal length of drawer

Installation measurement

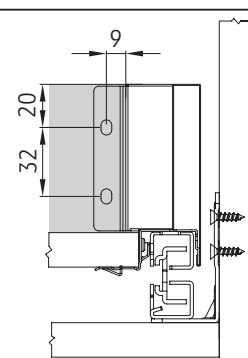


Mounting dimensions for drawer front panel



To precisely drill your holes we recommend using Sevrroll templates:
– for assembly of drawer front mounts (5058)
– for assembly of drawer guides (5050)

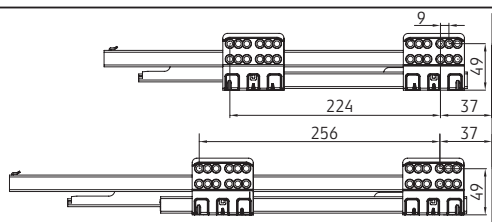
Mounting dimensions of back panel



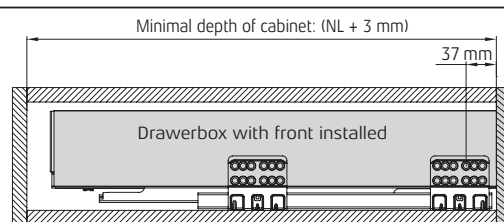
Drawer runner positioning

Slide NL: 270
300
350
400
450

Slide NL: 500
550



Minimal depth of cabinet: (NL + 3 mm)

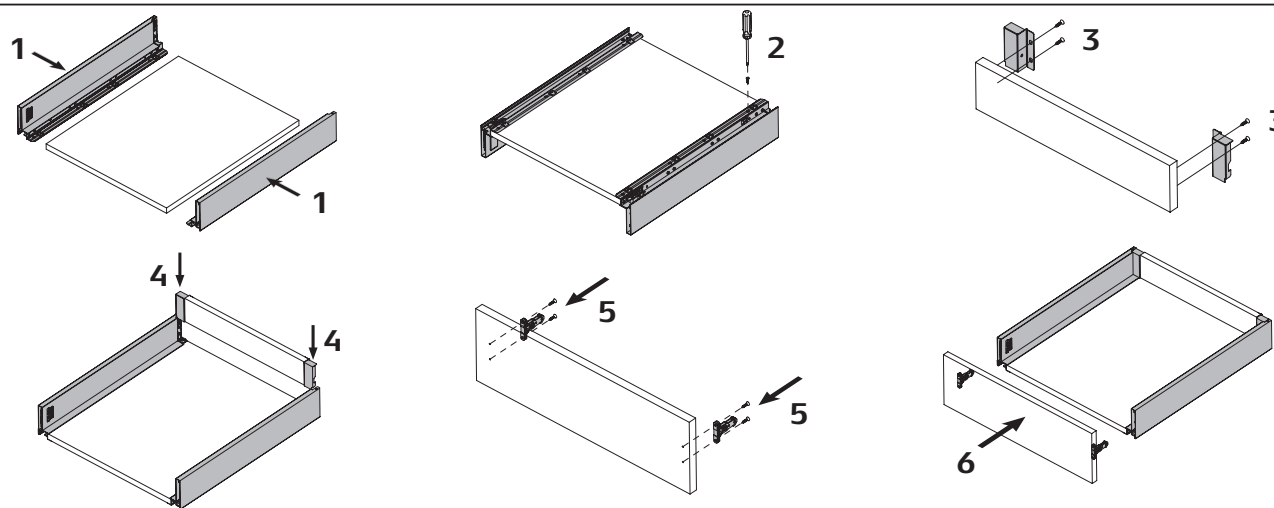


NL: 270 [mm]
300
350
400
450
500
550

Drawer front installed

Warning: in drawers with recessed fronts, the guides should be positioned further back by the thickness of the drawer front!

Drawer assembly





Components	Cutting dimensions of 16 mm MDF
<p>ATTENTION! screws are not included</p>	<p>NL: 270 (mm) 300 350 400 450 500 550</p> <p>A – Base panel B – Back panel</p> <p>LW – internal cabin width NL – nominal length of drawer</p>

Installation measurement	Mounting dimensions for drawer front panel	Mounting dimensions of back panel
	<p>To precisely drill your holes we recommend using Sevroll templates: – for assembly of drawer front mounts (5058) – for assembly of drawer guides (5050)</p>	

Drawer runner positioning		
<p>Slide NL: 270 300 350 400 450</p> <p>Slide NL: 500 550</p>	<p>Minimal depth of cabinet: (NL + 3 mm)</p> <p>Drawerbox with front installed</p> <p>Drawer front installed</p>	<p>NL: 270 (mm) 300 350 400 450 500 550</p>

Warning: in drawers with recessed fronts, the guides should be positioned further back by the thickness of the drawer front!

Drawer assembly		
<p>1</p>	<p>2</p>	<p>3</p>
<p>4</p>	<p>5</p>	<p>6</p>



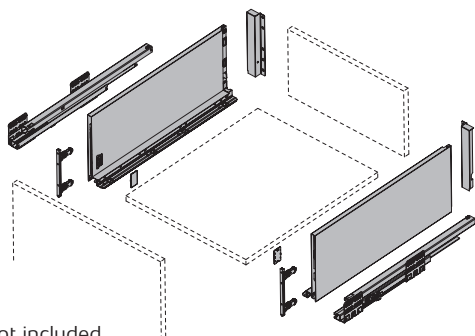
DRAWERS

SEVROLLBOX SLIM



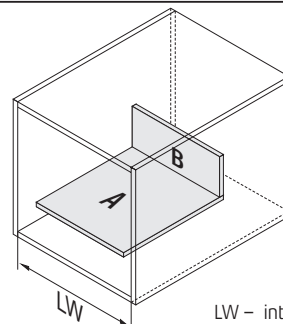
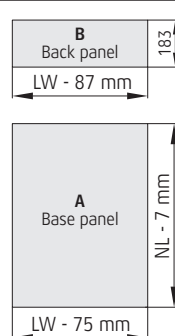
Assembly instructions

Components



ATTENTION!
screws are not included

Cutting dimensions of 16 mm MDF

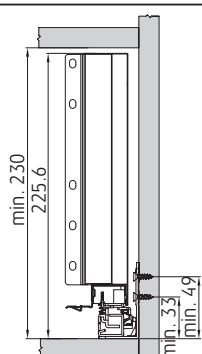


NL: 270 [mm]
300
350
400
450
500
550

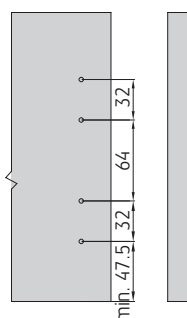
A – Base panel
B – Back panel

LW – internal cabin width
NL – nominal length of drawer

Installation measurement

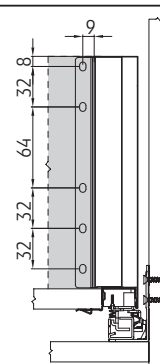


Mounting dimensions for drawer front panel



To precisely drill your holes we recommend using Sevrill templates:
– for assembly of drawer front mounts (5058)
– for assembly of drawer guides (5050)

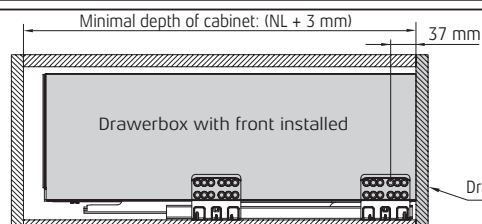
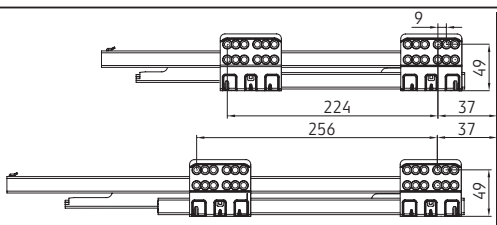
Mounting dimensions of back panel



Drawer runner positioning

Slide NL: 270
300
350
400
450

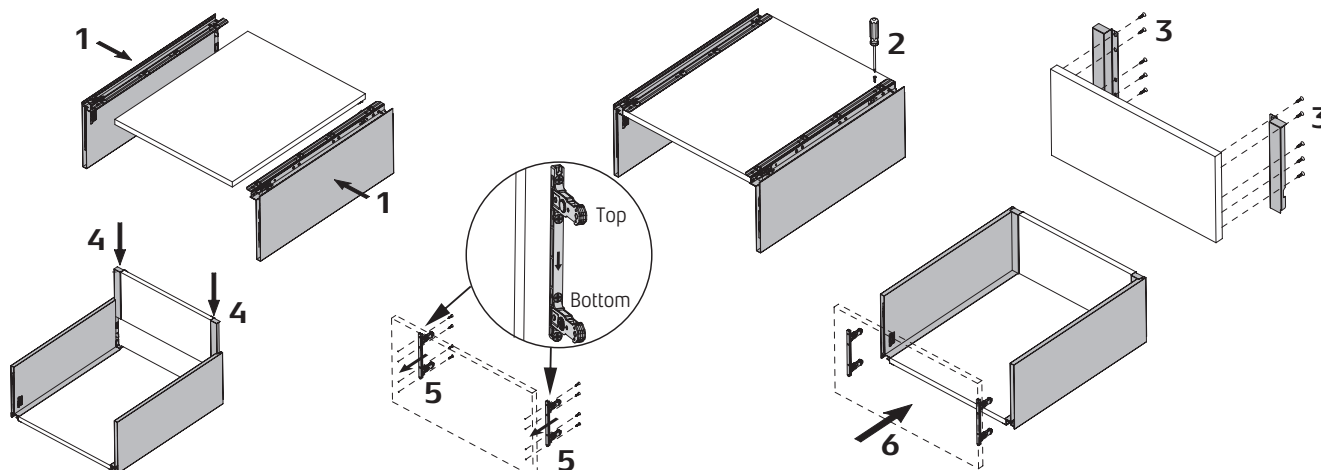
Slide NL: 500
550



NL: 270 [mm]
300
350
400
450
500
550

Warning: in drawers with recessed fronts, the guides should be positioned further back by the thickness of the drawer front!

Drawer assembly



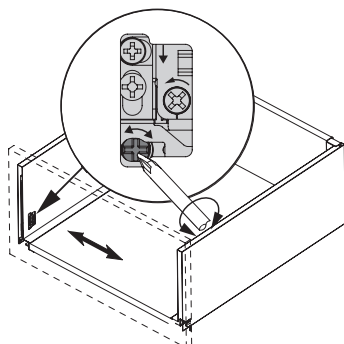


SEVROLLBOX SLIM

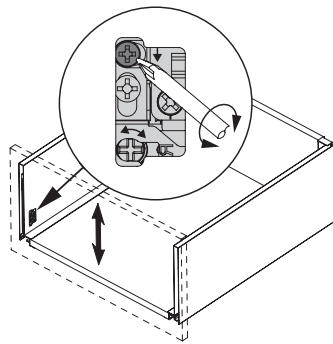
DRAWERS



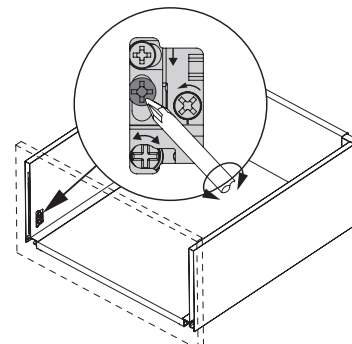
Drawer front regulation



Side adjustment within ± 1.5 mm

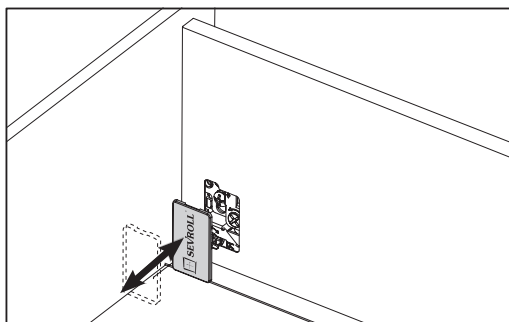


Height adjustment within ± 2 mm

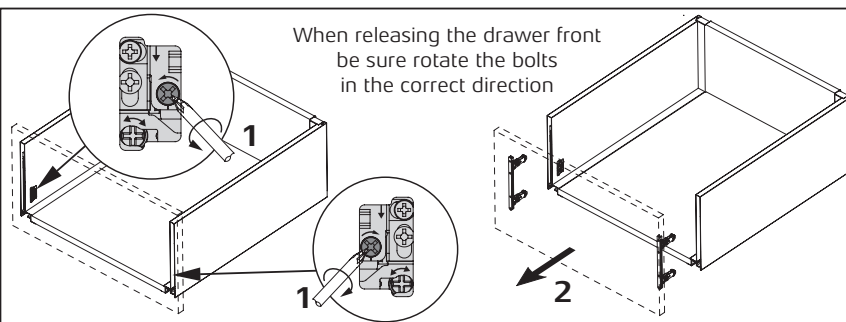


Locking

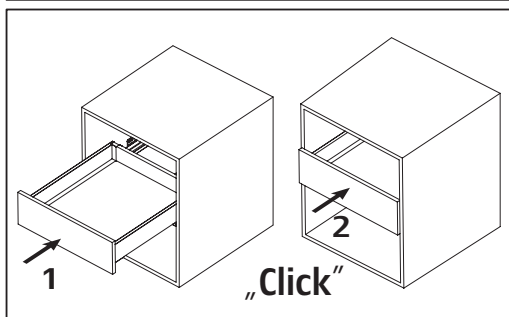
Cover insertion / removal



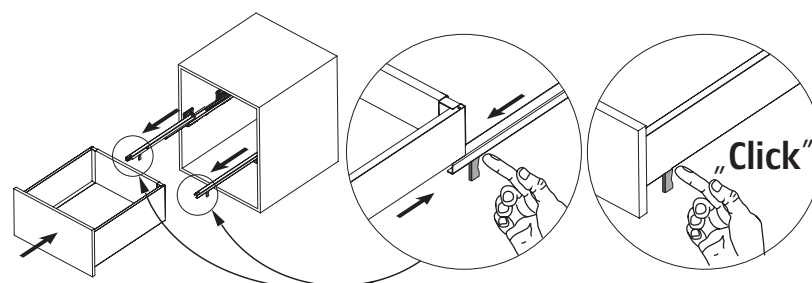
Drawer front panel removal



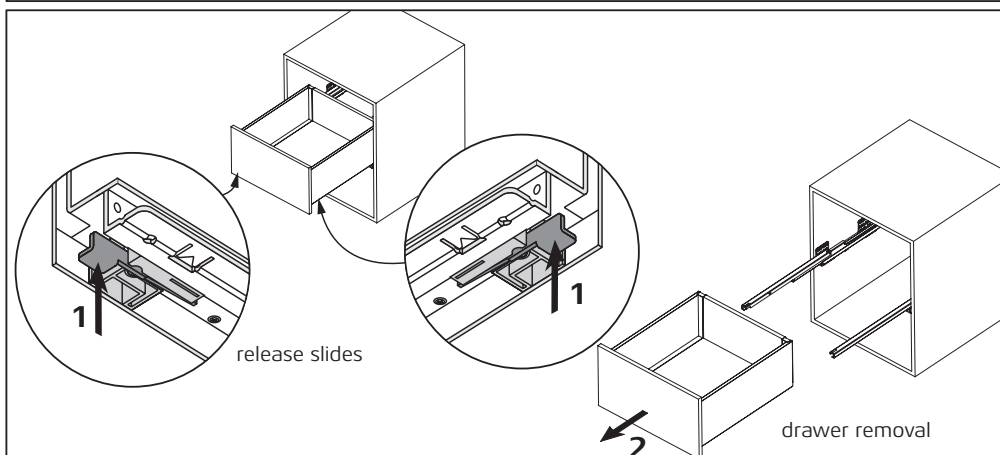
Drawer insertion



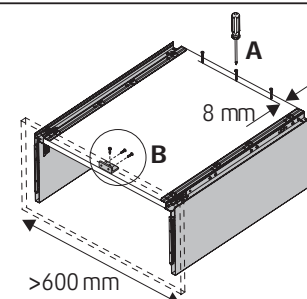
Additionally: For ease of assembly (especially with full overlay fronts) you can withdraw the slides. Hold in the highlighted position and use the release catches.



Drawer removal



Drawer strengthening



We recommend additional reinforcement for drawers with a width greater than 600 mm:

- A** - screw the bottom of the drawer to the drawer back using three 3.5x30 screws
- B** - screwing the bottom of the drawer to the drawer front using steel bracket (40343) and 3.5x13 screws



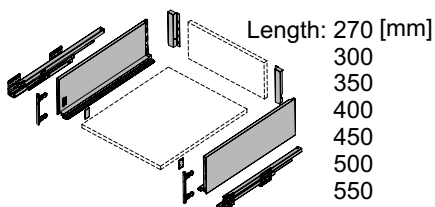
DRAWERS

SEVROLLBOX SLIM

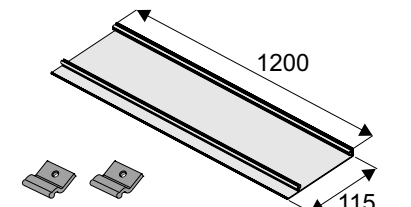
Assembly instructions

Internal drawer

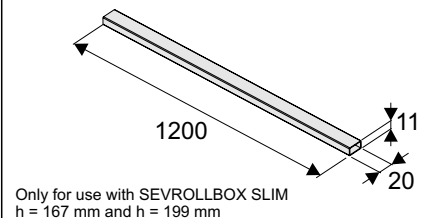
Drawer SEVROLLBOX SLIM
h = 84 mm / h = 167 mm / h = 199 mm



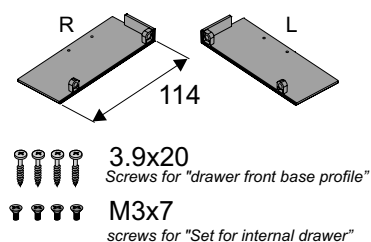
Universal drawer front base profile for
internal drawer SEVROLLBOX SLIM



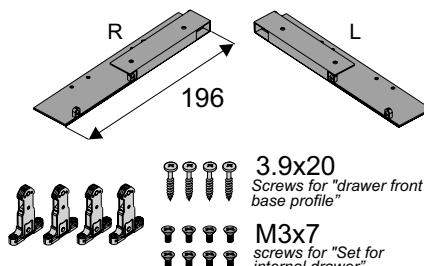
Universal drawer front railing for internal
drawer SEVROLLBOX SLIM



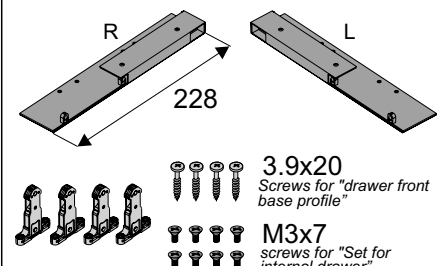
Set for internal drawer
SEVROLLBOX SLIM h = 84 mm



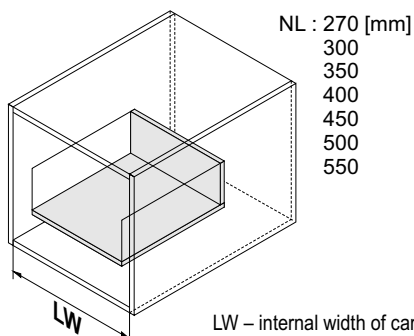
Set for internal drawer
SEVROLLBOX SLIM h = 167 mm



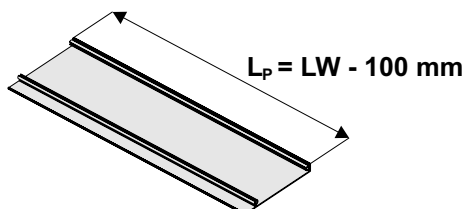
Set for internal drawer
SEVROLLBOX SLIM h = 199 mm



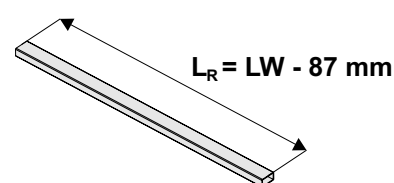
Cutting dimensions of profiles



Universal drawer front base profile



Universal drawer front railing

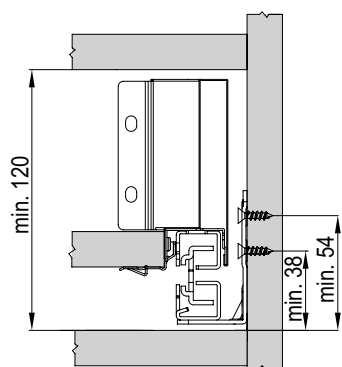


LW – internal width of carcass
NL – nominal length of the drawer

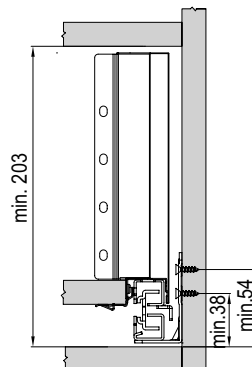
Calculations for the back wall and base of the drawer
can be found in the instructions SEVROLLBOX SLIM

Mounting dimensions

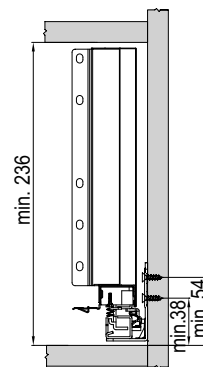
SEVROLLBOX SLIM h = 84 mm



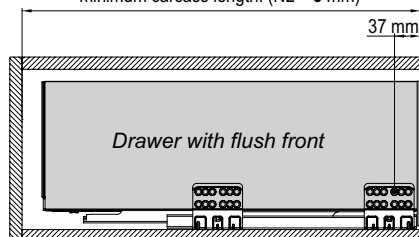
SEVROLLBOX SLIM h = 167 mm



SEVROLLBOX SLIM h = 199 mm

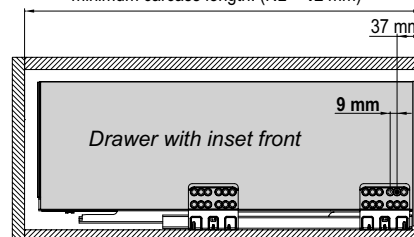


minimum carcass length: (NL + 3 mm)



The front of the drawer sits level with the carcass edges

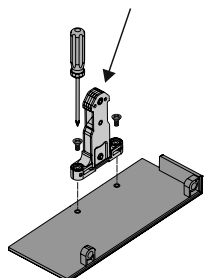
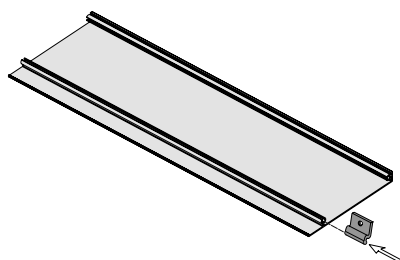
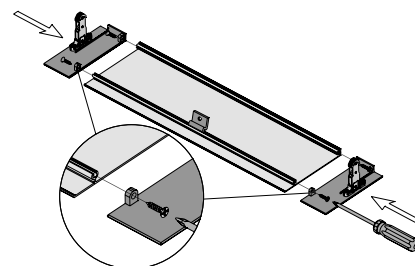
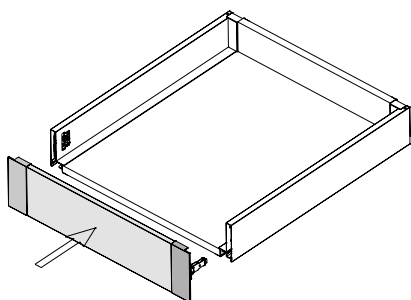
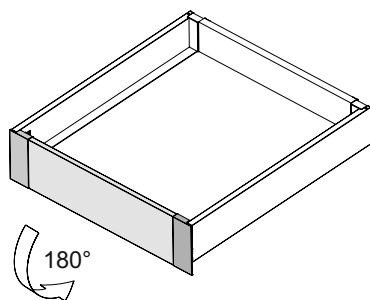
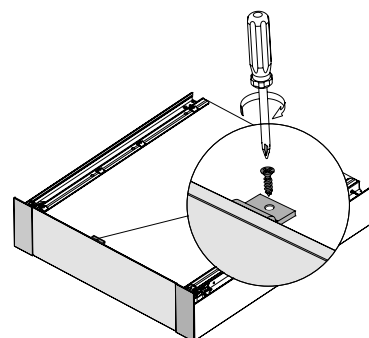
minimum carcass length: (NL + 12 mm)



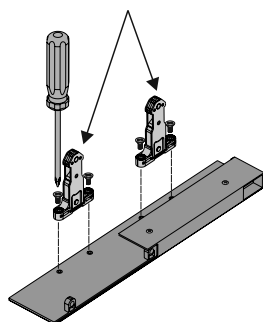
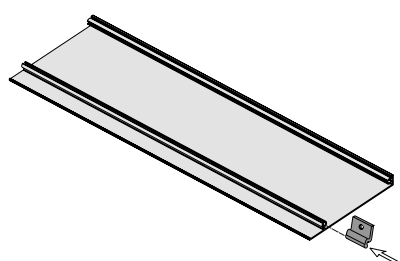
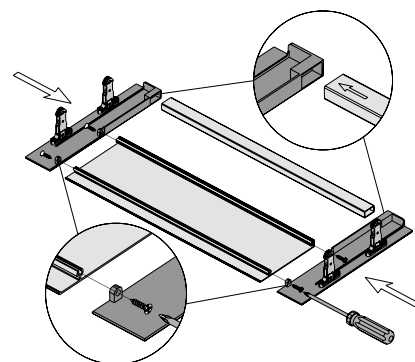
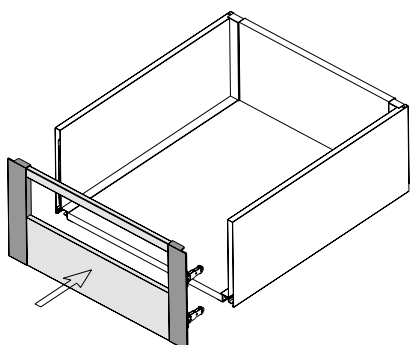
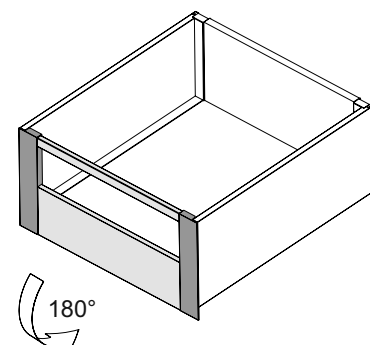
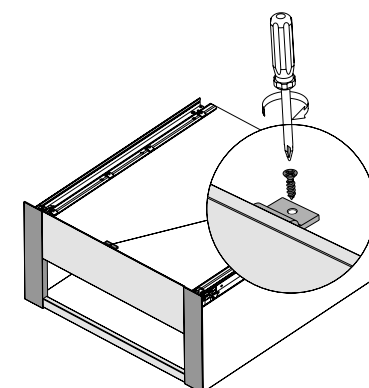
ATTENTION! To ensure that the drawers cover the high front applied,
the guides should be taken back by 9 mm (one hole in the guide)
into the carcass

**Internal drawer****Installing the drawer front for SEVROLLBOX SLIM h = 84 mm**

ATTENTION! Use the drawer front catches supplied with your **Sevrollbox Slim drawer h = 84 mm**

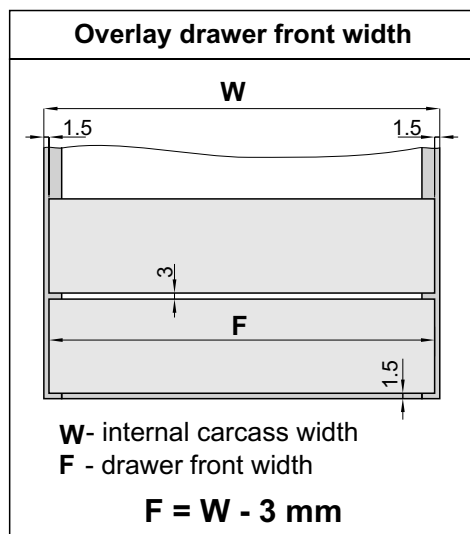
**1****2****3****4****5****6****Installing the drawer front for SEVROLLBOX SLIM h = 167 mm and h = 199 mm**

ATTENTION! Use the drawer front catches supplied with your Sevrollbox Slim drawer

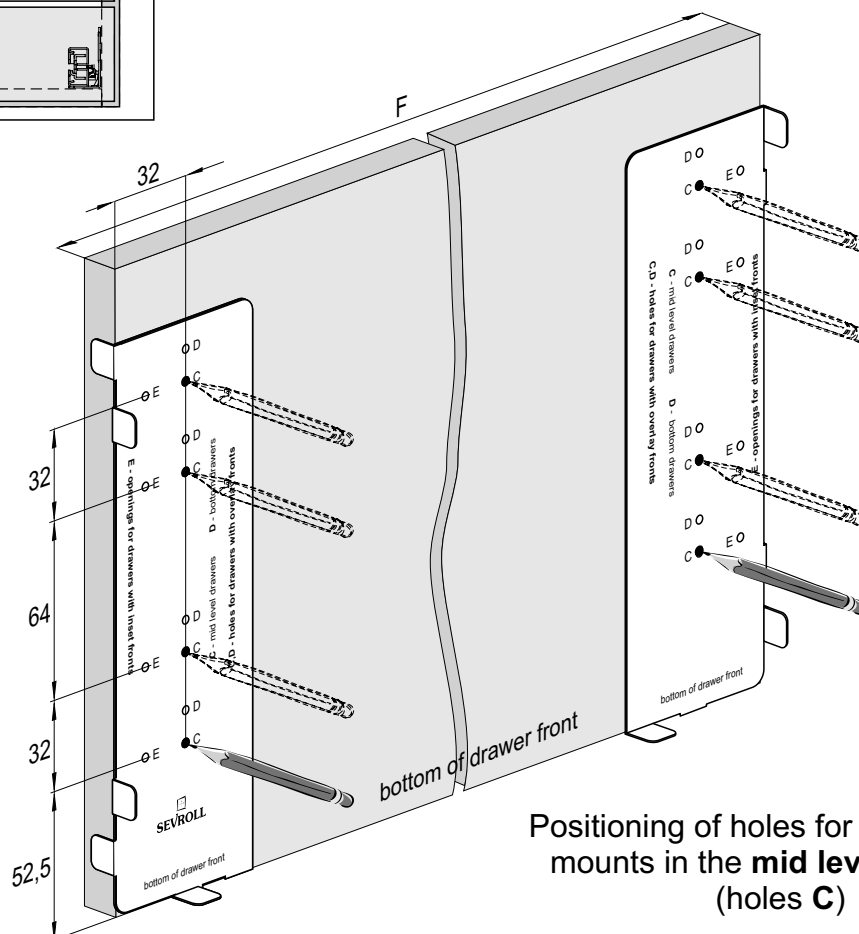
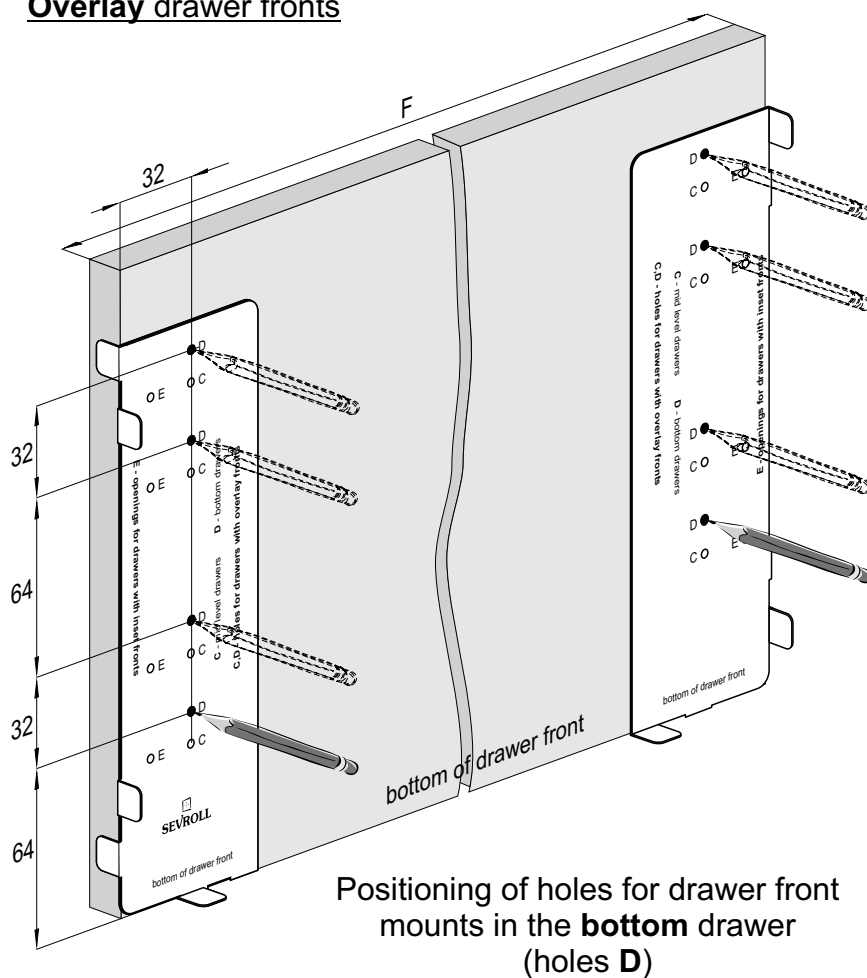
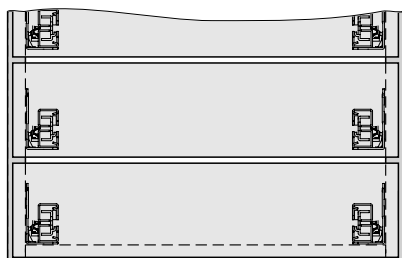
**1****2****3****4****5****6**



Template for DRAWER FRONTS

Overlay drawer fronts

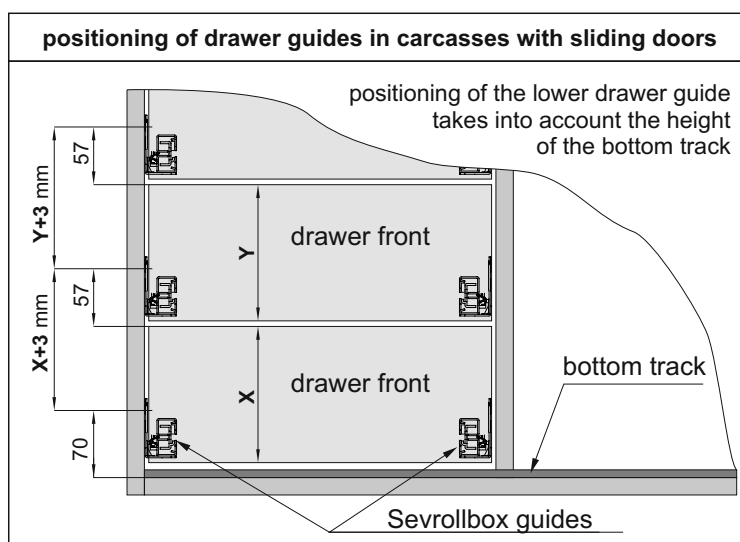
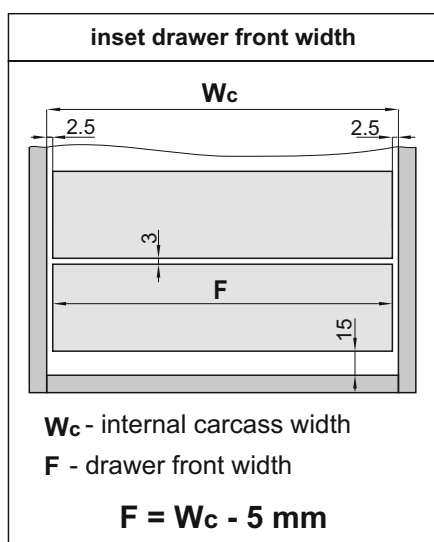
Template **Sevrollbox Slim** for guides
can be used to determine guide
positions with overlay drawer fronts



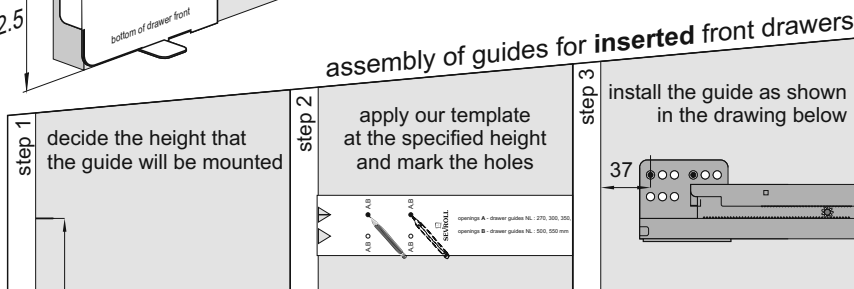
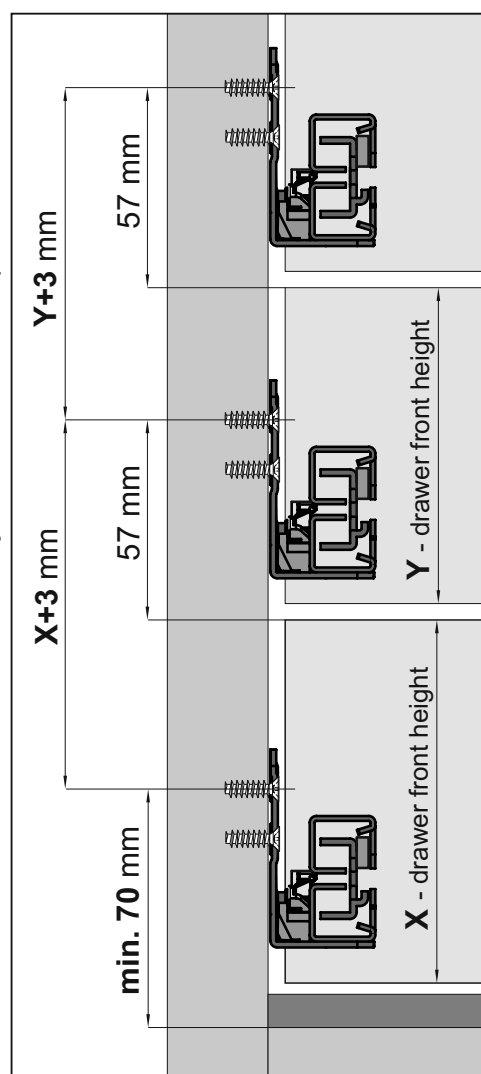
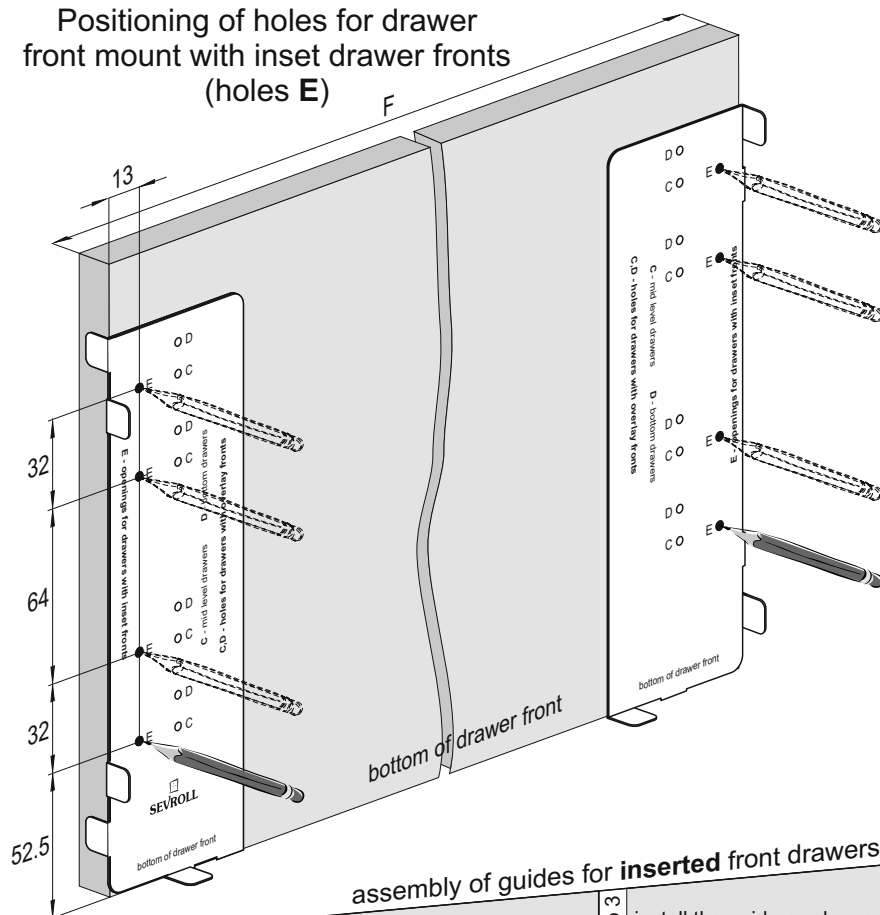


Template for DRAWER FRONTS

Inset drawer fronts

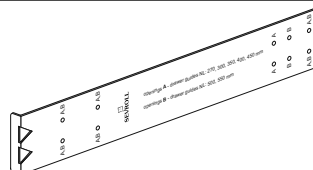


Positioning of holes for drawer front mount with inset drawer fronts (holes E)



Important information

Sevroll offers the template
Sevrollbox Slim for guides (index: **05050**)
 for determining the hole positioning for guides
 in Sevrollbox Slim drawers.





DRAWERS

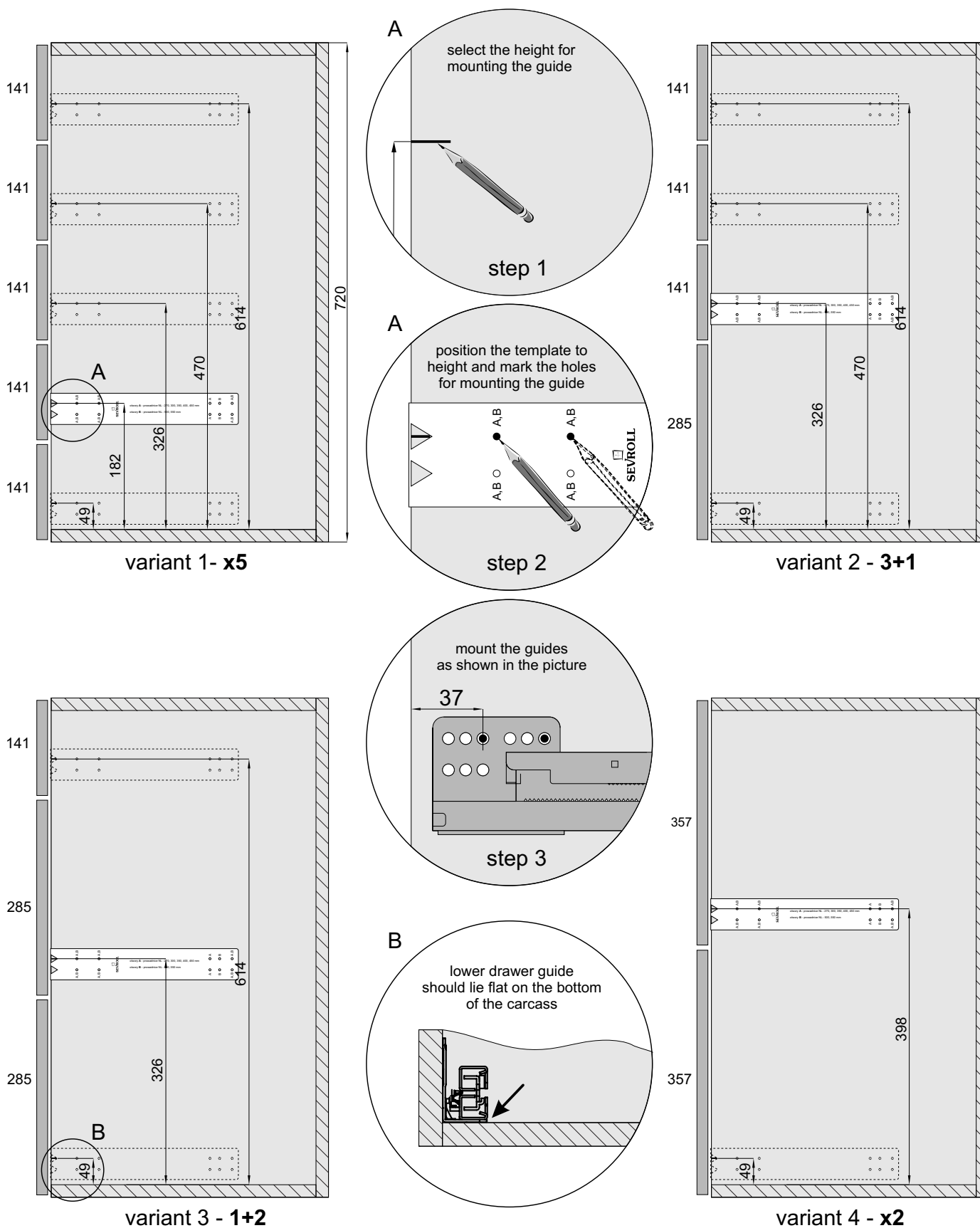
SEVROLLBOX SLIM

Assembly tools – instructions

Template for GUIDES

Marking holes for attaching the guides to Sevrollbox Slim drawers
with **overlays** fronts

The height of Sevrollbox Slim guides in furniture carcasses (height 720 mm)
- 4 variants

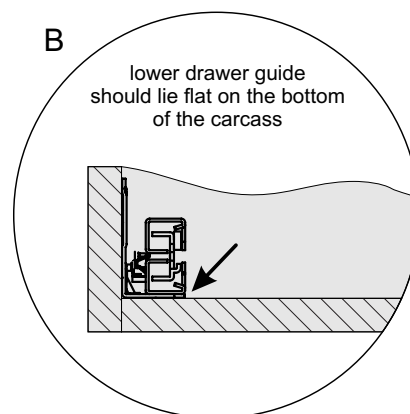
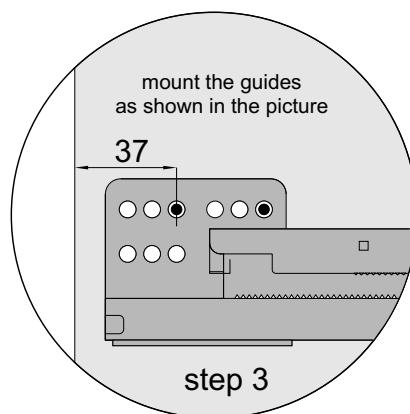
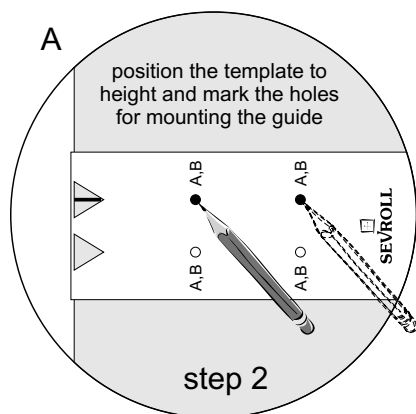
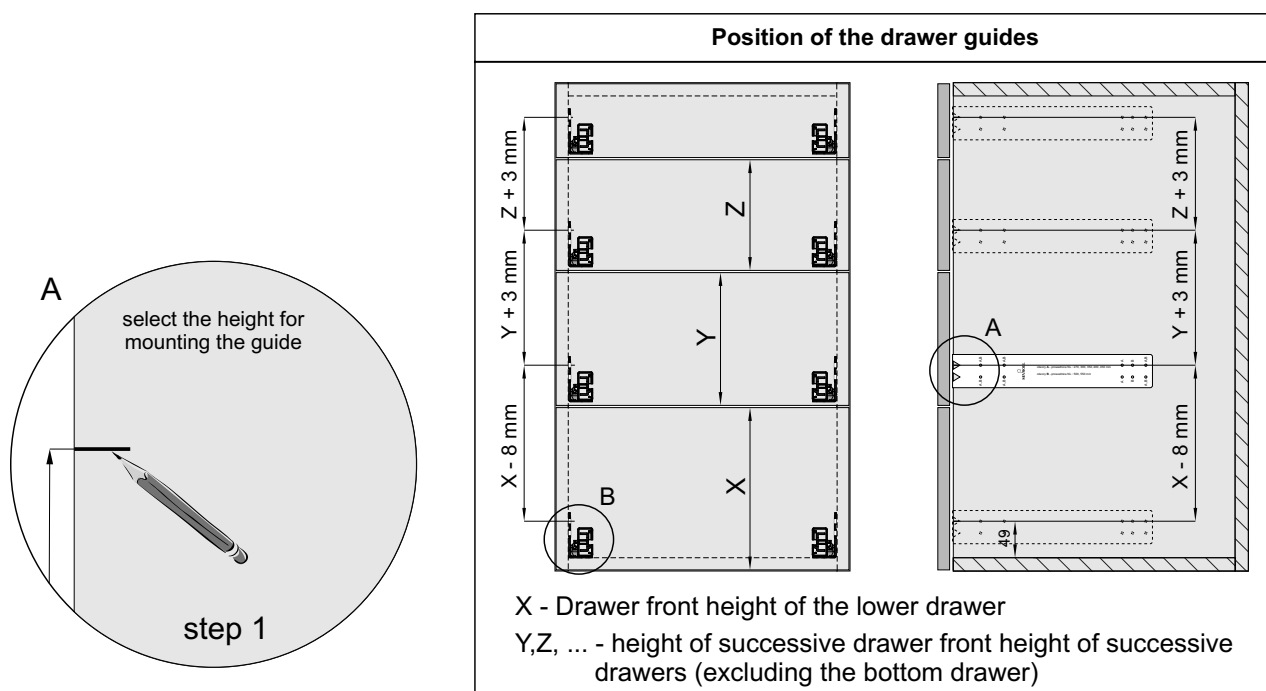




Template for GUIDES

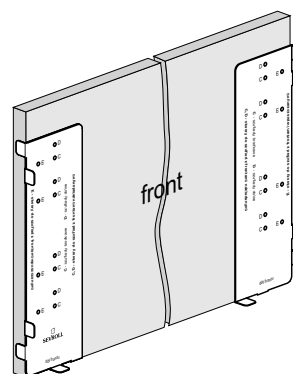
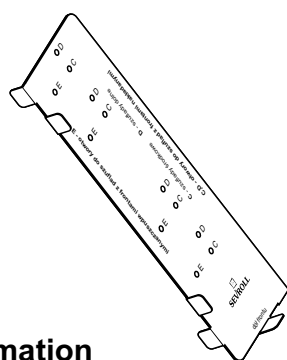
Marking holes for attaching the guides to Sevrollbox Slim drawers
with **overlays** fronts

Any height of carcass, quantity and drawer front height



Important information

Sevroll's offer also includes the template Sevrollbox Slim for drawer fronts (index: 05058). This is used for marking the holes to mount drawer fronts to Sevrollbox Slim drawers.





FULL EXTENSION BALL BEARING SLIDES

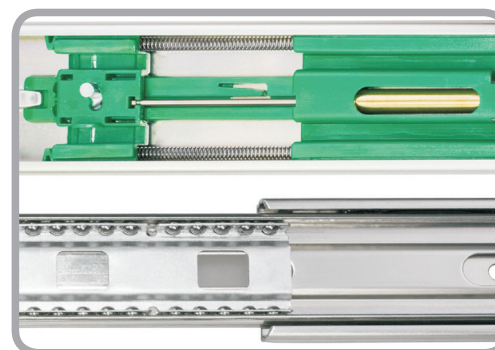
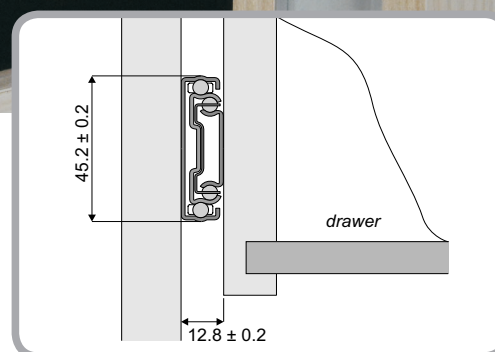
Full extension ball bearing slides with soft-close



Sevroll's modern and reliable slides

Full extension ball bearing slides with soft-closing mechanism constitute yet another innovative Sevroll product. A compact 45 mm high quality construction is used whilst maintaining high load capacity. They are constructed from metal resistant to deformation. Our soft-close mechanism is supported by a double spring and brass shock absorbing cylinder.

Each guide is equipped with 5 sets of 5 ball bearings on each side to obtain great stability and durability. All complemented by the best of oil solutions used for guide lubrication and maintenance. The wide range of guide lengths (250-600) makes them a great choice for kitchen and office furniture, enabling the creation of spacious and durable drawers.



CHARACTERISTICS

► Application	Guide for wooden drawers boxes
► Filling	Any material
► Available lengths	250, 300, 350, 400, 450, 500, 550, 600 mm
► The minimum height of the side	45 mm
► Construction	Metal, combined with an integrated soft-close
► Weight limit	30 kg
► Number of test cycles	70,000
► Color	N/A
► Sales programme	These guides are sold in sets

USAGE

► Carcass furniture, kitchens, walk-in wardrobes, wardrobes, office furniture, archives

BALL BEARING SLIDES

FULL EXTENSION



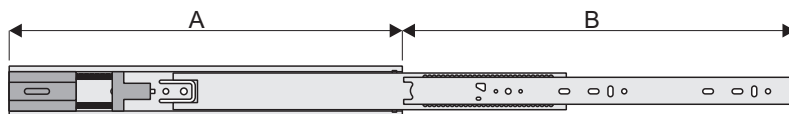
Full extension ball bearing slides with soft-close



CODE	LENGTH (mm)	HEIGHT (mm)	COLLECTIVE PACKAGING	PRICED PER
04896	250	45	15	set
04897	300	45	15	set
04898	350	45	15	set
04899	400	45	15	set
04900	450	45	15	set
04901	500	45	15	set
04902	550	45	15	set
04903	600	45	15	set

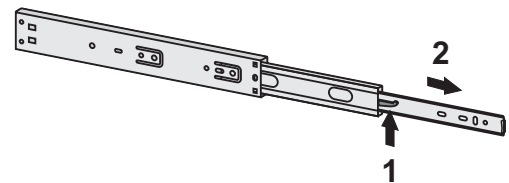


Slide length

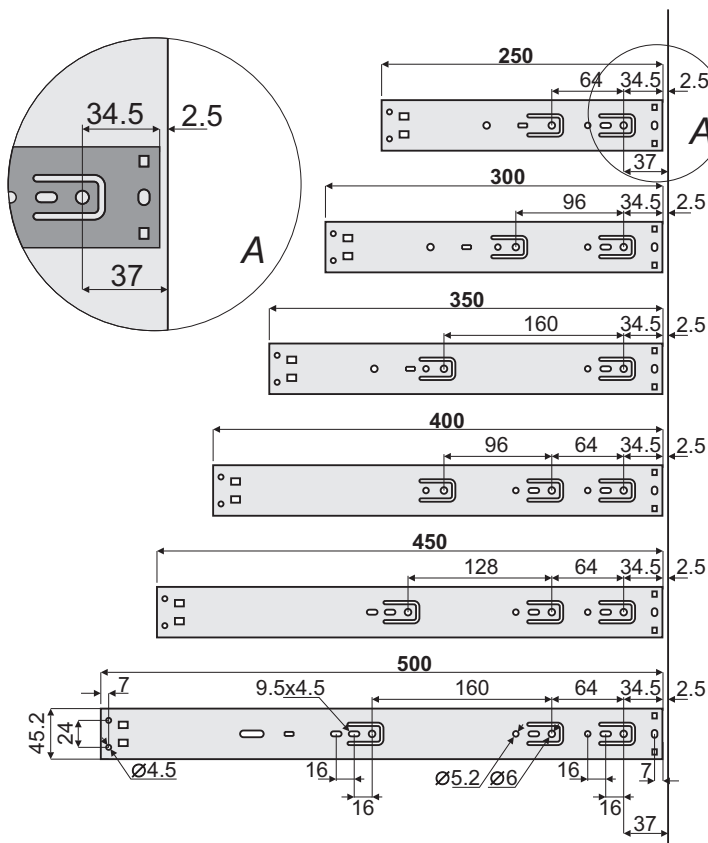


A	250	300	350	400	450	500
B	192±2	268±2	343±2	382±2	452±2	503±2

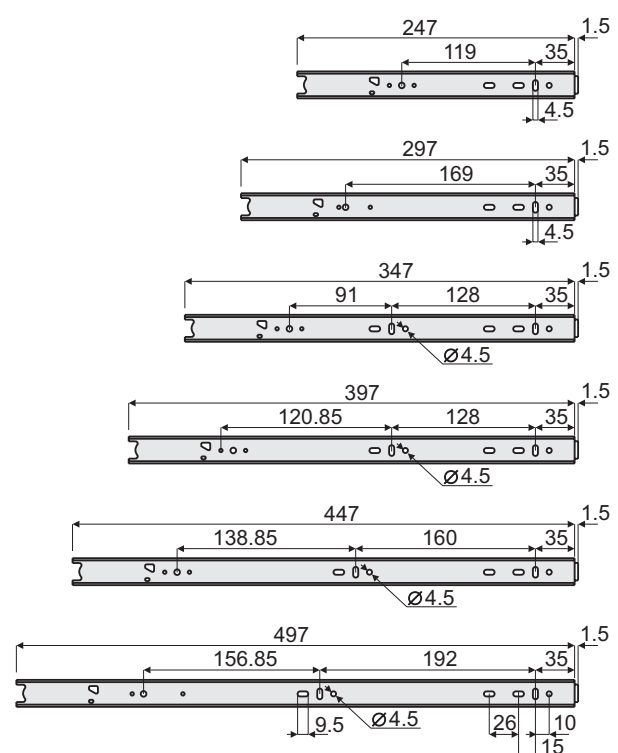
Slide disassembly



Attaching the slide to the carcass



Attaching the slide to the drawer





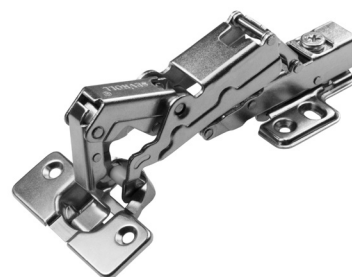
HINGES

Soft-close clip-on hinges



Sevroll hinges – the right option for fixing doors

A silent closing mechanism is an option that increases the comfort of furniture use. The use of clip-on hinges together with a silent closing mechanism means that the door is defended against a loud slam. Our buffering system also works during the final phase of opening – weakened tension during this phase prevents light door fronts from hitting. The standard hinge offer is complemented by a 4 screw universal mounting plate, this accommodates large and heavy door fronts. Hinges with premounting screws and hinges with smooth regulation allow easier and more accurate adjustment. Sevroll always focuses on the quality of workmanship and tested materials, this is why our hinges come with a guarantee of 80,000 open-close cycles. In practice, this ensures many years of reliable operation whilst remaining within full operational parameters.



CHARACTERISTICS

► Application	Installation of cabinet doors
► Door material	Wooden and MDF board over 18 mm
► Construction	High-quality steel alloy
► Number of test cycles	80,000
► Sales programme	Hinges are sold in both sets and as elements

USAGE

- Carcass furniture - installation of doors



Hinges, hole spacing 45 mm ø35 mm

NEW!

OVERLAY hinge, hole spacing 45 mm ø35 mm – soft-close clip-on hinges (2 pcs)



CODE	COLOUR	COLLECTIVE PACKAGING	PRICED PER
223032	SILVER	50	set

i Set includes 2 hinges, 2 mounting plates, plus cup/arm cover caps and screws

HALF OVERLAY hinge, hole spacing 45 mm ø35 mm – soft-close clip-on hinges (2 pcs)



CODE	COLOUR	COLLECTIVE PACKAGING	PRICED PER
223033	SILVER	50	set

i Set includes 2 hinges, 2 mounting plates, plus cup/arm cover caps and screws

INSET hinge, hole spacing 45 mm ø35 mm – soft-close clip-on hinges (2 pcs)



CODE	COLOUR	COLLECTIVE PACKAGING	PRICED PER
223034	SILVER	50	set

i Set includes 2 hinges, 2 mounting plates, plus cup/arm cover caps and screws





SOFT-CLOSE CLIP-ON

HINGES

Angled hinges, hole spacing 48 mm ø35 mm

ANGLED Hinge 30°, ø35 mm – soft-close clip-on hinges (2 pcs)



CODE	COLOUR	COLLECTIVE PACKAGING	PRICED PER
222876	SILVER	50	set

i Set includes 2 hinges, 2 mounting plates, plus cup/arm cover caps and screws. Additionally these hinges have eccentric depth regulation.

ANGLED Hinge 45°, ø35 mm – soft-close clip-on hinges (2 pcs)



CODE	COLOUR	COLLECTIVE PACKAGING	PRICED PER
222877	SILVER	50	set

i Set includes 2 hinges, 2 mounting plates, plus cup/arm cover caps and screws. Additionally these hinges have eccentric depth regulation.

ANGLED Hinge 90°, ø35 mm – soft-close clip-on hinges (2 pcs)



CODE	COLOUR	COLLECTIVE PACKAGING	PRICED PER
222878	SILVER	50	set

i Set includes 2 hinges, 2 mounting plates, plus cup/arm cover caps and screws. Additionally these hinges have eccentric depth regulation.

ANGLED Hinge 135°, ø35 mm – clip-on hinges (2 pcs)



CODE	COLOUR	COLLECTIVE PACKAGING	PRICED PER
222879	SILVER	50	set

i Set includes 2 hinges, 2 mounting plates, plus cup/arm cover caps and screws

FULL OVERLAY Hinge 165°, ø35 mm – soft-close clip-on hinges (2 pcs)



CODE	COLOUR	COLLECTIVE PACKAGING	PRICED PER
222882	SILVER	50	set

i Set includes 2 hinges, 2 mounting plates, plus cup/arm cover caps and screws. Additionally these hinges have eccentric depth regulation.

**Hinges with premounting screws, hole spacing 45 mm ø35 mm****NEW!****OVERLAY** hinge without mounting plate – hole spacing 45 mm ø35 mm – soft-close clip-on hinges (1 pc.)

CODE	COLOUR	COLLECTIVE PACKAGING	PRICED PER
222969	SILVER	100	item

i Hinge without mounting plate sold individually**HALF OVERLAY** hinge without mounting plate – hole spacing 45 mm ø35 mm – soft-close clip-on hinges (1 pc.)

CODE	COLOUR	COLLECTIVE PACKAGING	PRICED PER
222970	SILVER	100	item

i Hinge without mounting plate sold individually**INSET** hinge without mounting plate – hole spacing 45 mm ø35 mm – soft-close clip-on hinges (1 pc.)

CODE	COLOUR	COLLECTIVE PACKAGING	PRICED PER
222971	SILVER	100	item

i Hinge without mounting plate sold individually**Universal mounting plate** with premounting screws

CODE	COLOUR	COLLECTIVE PACKAGING	PRICED PER
222974	SILVER	100	item

i Universal mounting plate sold individually

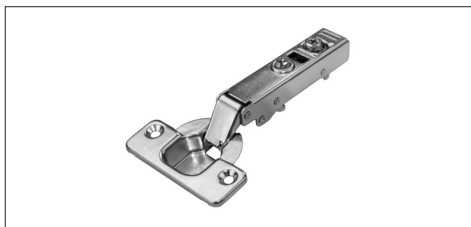


SOFT-CLOSE CLIP-ON

HINGES

Hinges with eccentric adjustment, hole spacing 48 mm \varnothing 35 mm

OVERLAY hinge without mounting plate – hole spacing 48 mm \varnothing 35 mm – soft-close clip-on hinges with eccentric adjustment (1 pc.)



CODE	COLOUR	COLLECTIVE PACKAGING	PRICED PER
223028	SILVER	100	pcs

i Hinge without mounting plate sold individually

HALF OVERLAY hinge without mounting plate – hole spacing 48 mm \varnothing 35 mm – soft-close clip-on hinges with eccentric adjustment (1 pc.)



CODE	COLOUR	COLLECTIVE PACKAGING	PRICED PER
223029	SILVER	100	pcs

i Hinge without mounting plate sold individually

INSET hinge without mounting plate – hole spacing 48 mm \varnothing 35 mm – soft-close clip-on hinges with eccentric adjustment (1 pc.)



CODE	COLOUR	COLLECTIVE PACKAGING	PRICED PER
223030	SILVER	100	pcs

i Hinge without mounting plate sold individually

Universal mounting plate with 4 symmetrical holes



CODE	COLOUR	COLLECTIVE PACKAGING	PRICED PER
223031	SILVER	100	pcs

i Universal mounting plate sold individually

Universal **hinge cup** cover cap

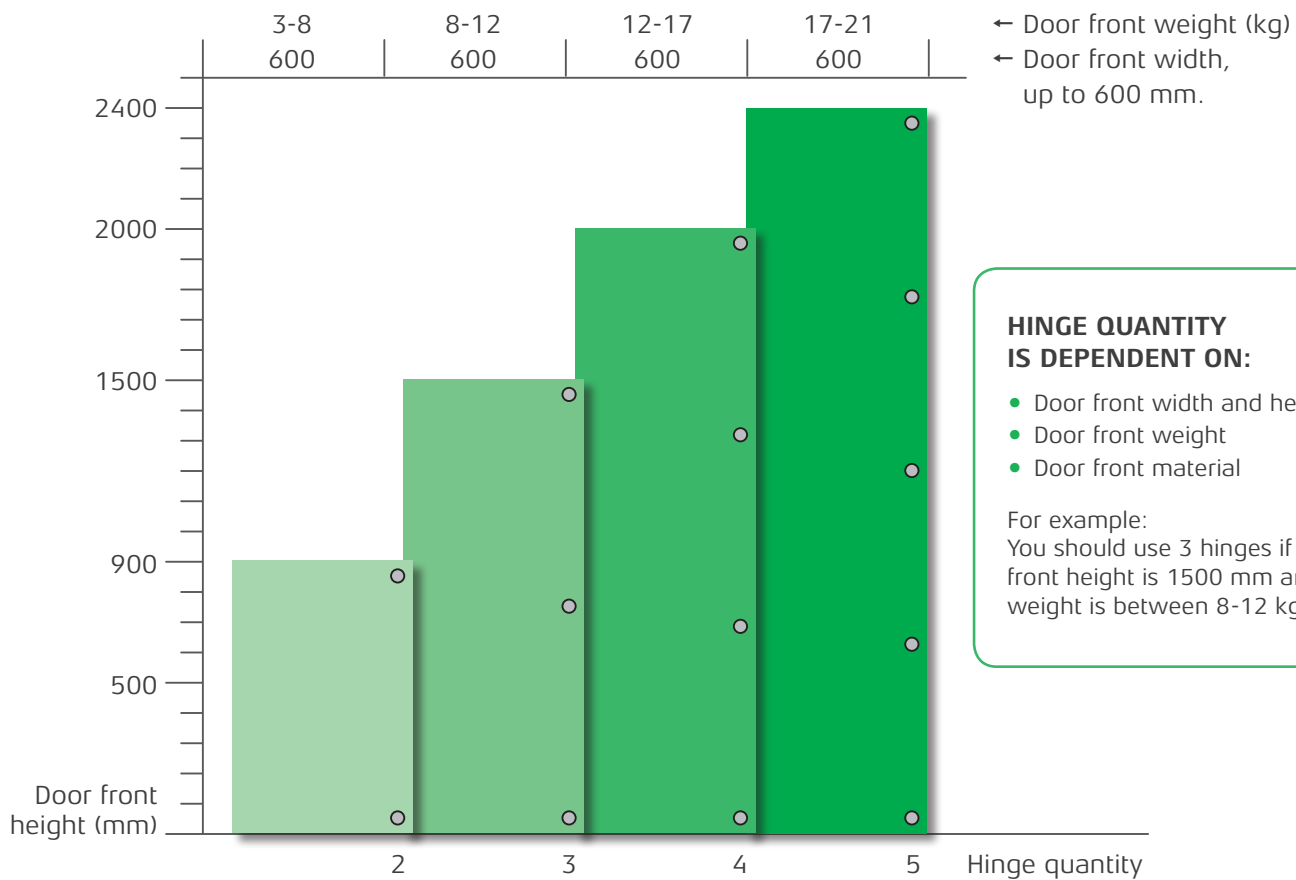
CODE	COLOUR	COLLECTIVE PACKAGING	PRICED PER
222972-SV	SILVER	1500	pcs

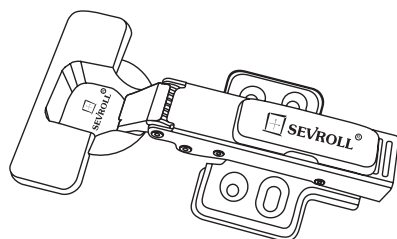
Universal **hinge arm** cover cap

CODE	COLOUR	COLLECTIVE PACKAGING	PRICED PER
222973-SV	SILVER	1500	pcs

HINGE QUANTIFIER

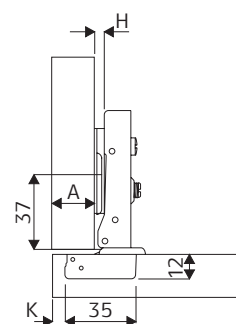
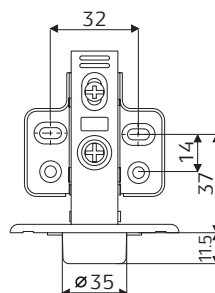
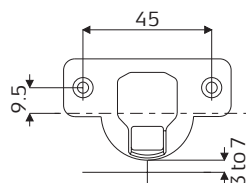
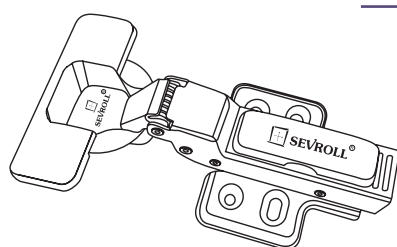
Determine the number of hinges required, depending on the height and weight of door fronts used



**Hinges, hole spacing 45 mm $\varnothing 35$ mm****OVERLAY hinge****Mounting plate H = 0**

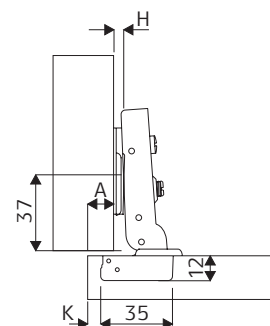
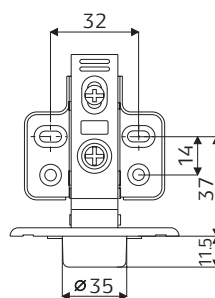
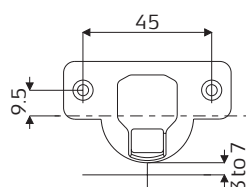
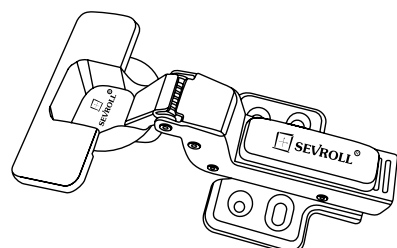
K	3	4	5	6	7
A	17	18	19	20	21

K – cup distance
A – overlay

**HALF OVERLAY hinge****Mounting plate H = 0**

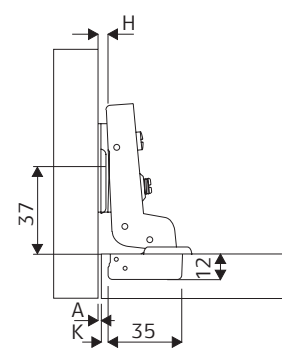
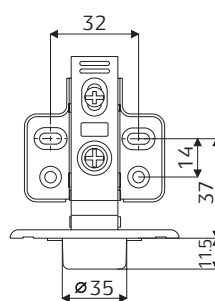
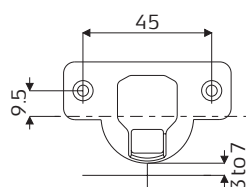
K	3	4	5	6	7
A	8	9	10	11	12

K – cup distance
A – overlay

**INSET hinge****Mounting plate H = 0**

K	3	4	5	6	7
A	1.5	0.5	-0.5	-1.5	-2.5

K – cup distance
A – gap





ANGLED hinges, hole spacing 48 mm $\varnothing 35$ mm

ANGLED hinge 30°

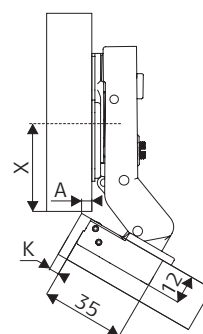
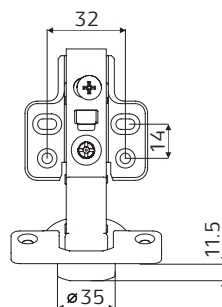
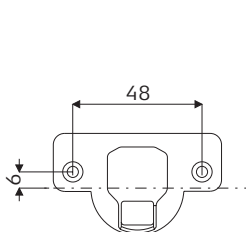
Mounting plate H=0

K	4	5	6	7
A	2.5	3.4	4.3	5.2
X	35	34	33	32

K – cup distance

A – overlay

X – guide distance



ANGLED hinge 45°

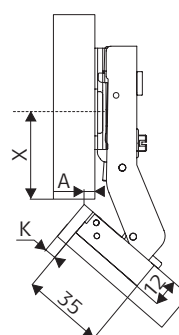
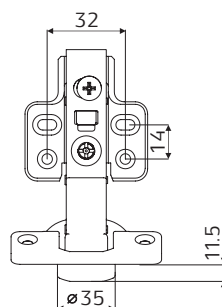
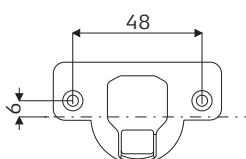
Mounting plate H=0

K	4	5	6	7
A	4.5	5.4	6.3	7.2
X	37	36	35	34

K – cup distance

A – overlay

X – guide distance



ANGLED hinge 90°

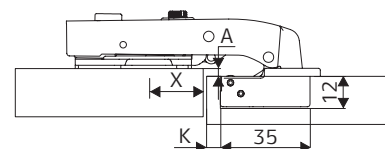
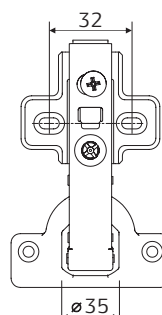
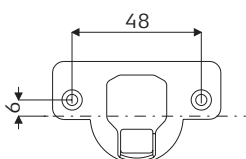
Mounting plate H=0

K	4	5
A	2.8	2.8
X	20	19

K – cup distance

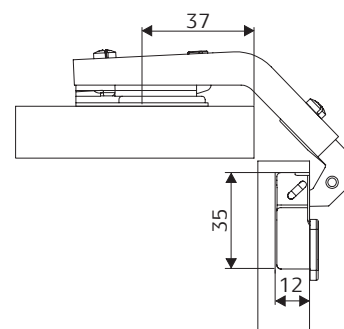
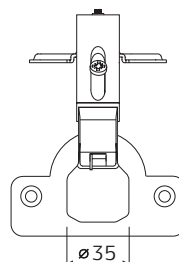
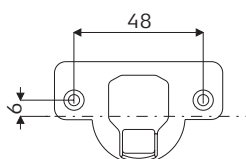
A – overlay

X – guide distance



ANGLED hinge 135°

Mounting plate H=0



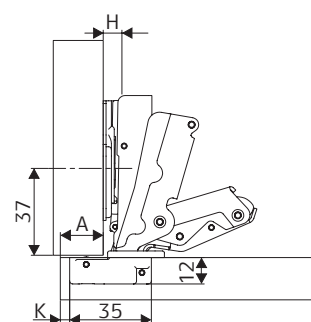
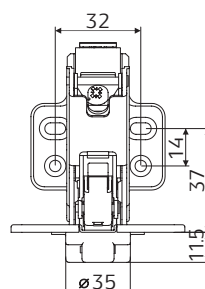
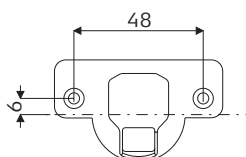
ANGLED hinge 165°

Mounting plate H=0

K	3	4	5	6	7
A	18	19	20	21	22

K – cup distance

A – overlay





SOFT-CLOSE CLIP-ON

HINGES

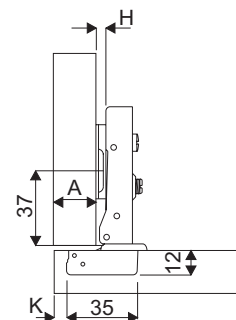
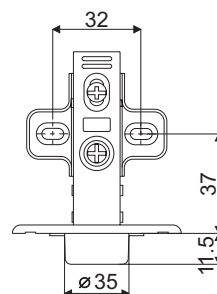
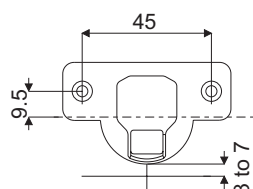
Hinges with premounting screws, hole spacing 45 mm $\varnothing 35$ mm

OVERLAY hinge

Mounting plate H = 0

K	3	4	5	6	7
A	17	18	19	20	21

K – cup distance
A – overlay

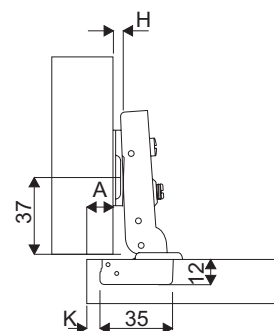
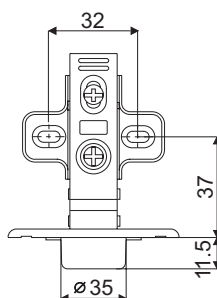
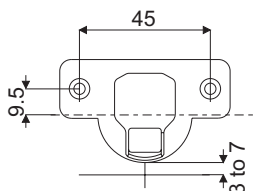


HALF OVERLAY hinge

Mounting plate H = 0

K	3	4	5	6	7
A	9	10	11	12	13

K – cup distance
A – overlay

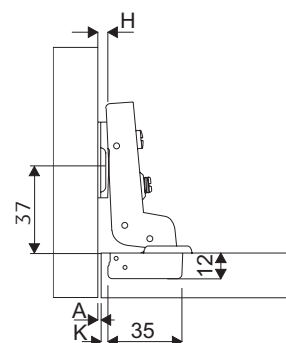
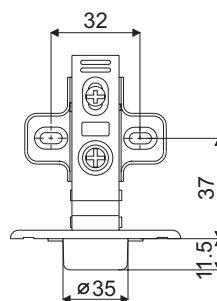
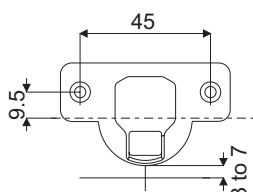


INSET hinge

Mounting plate H = 0

K	3	4	5	6	7
A	1.5	0.5	-0.5	-1.5	-2.5

K – cup distance
A – gap





Hinges with eccentric adjustment, hole spacing 48 mm $\varnothing 35$ mm

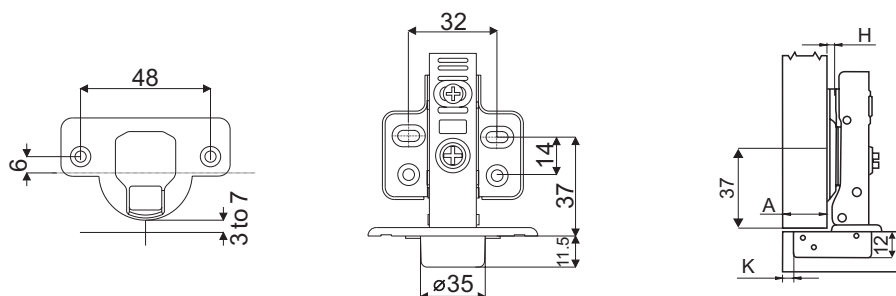


OVERLAY hinge

Mounting plate H=0

K	3	4	5	6	7
A	17	18	19	20	21

K – cup distance
A – overlay

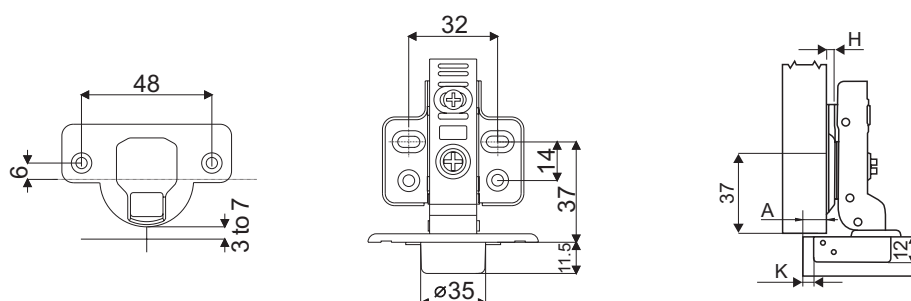


HALF OVERLAY hinge

Mounting plate H=0

K	3	4	5	6	7
A	9	10	11	12	13

K – cup distance
A – overlay

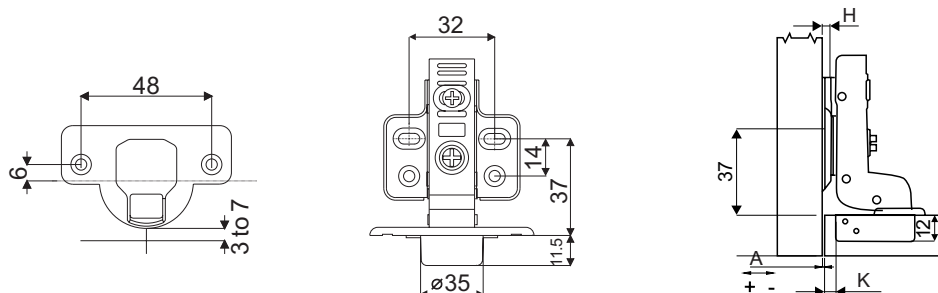


INSET hinge

Mounting plate H=0

K	3	4	5	6	7
A	1.5	0.5	-0.5	-1.5	-2.5

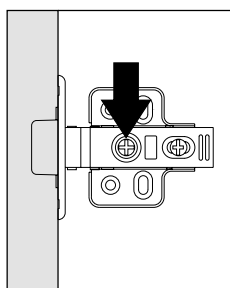
K – cup distance
A – gap



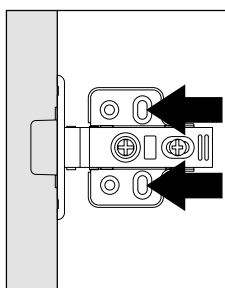
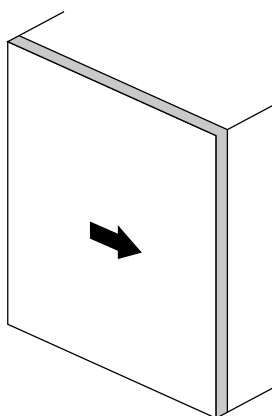


Hinge regulation

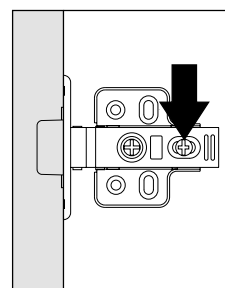
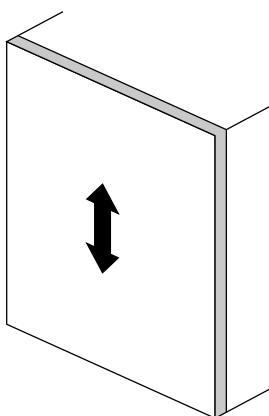
Hinges: OVERLAY, HALF OVERLAY, INSET



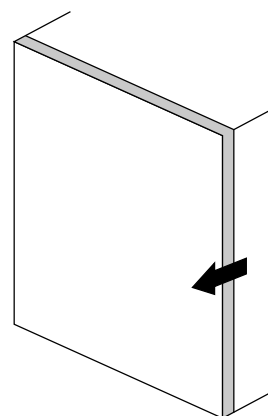
Adjustment: + 5 mm



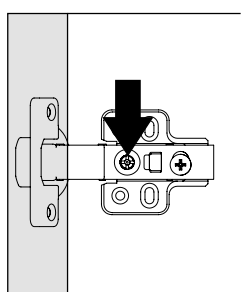
Adjustment: ± 2 mm



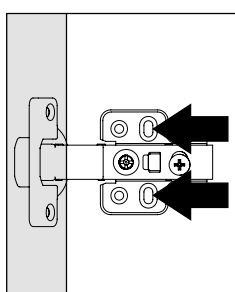
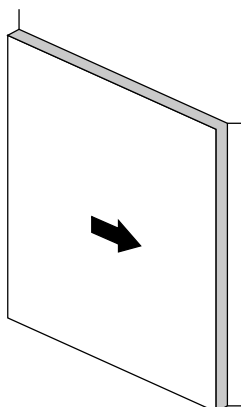
Adjustment: + 5 mm



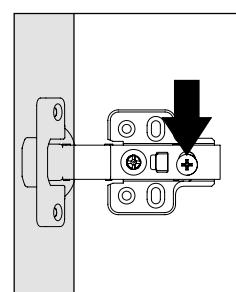
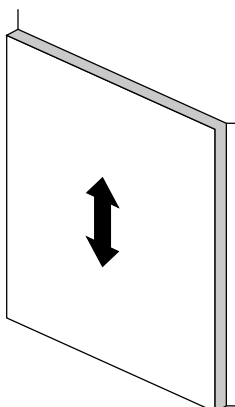
ANGLED hinges



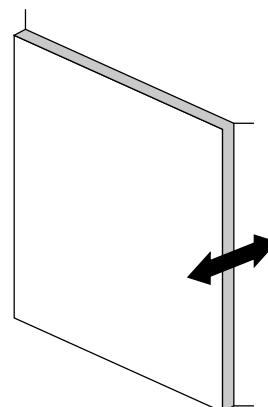
Adjustment: + 6 mm



Adjustment: ± 2 mm



Adjustment: ± 2 mm



Compositor5

New functions and improvements
simplifying furniture design

IMPROVED LAYOUT
OF PRODUCTION
LIST

INTERSECTING
MIDRAILS

UTILISE
EXCEL BASED
PRICE LISTS



- Design capability on mobile devices
- On-line design, directly through your internet browser
- New, simplified graphic design
- Separate filling management
- Possibility to design any project, even with intersecting midrails
- New option: import / export to Excel and export to PDF

Free version of COMPOSITOR 5
download at www.sevroll.com



FURNITURE FEET

Furniture legs with adjustable height



Sevroll furniture legs – heavy duty and high durability

Sevroll's furniture legs with adjustable height are a product offered in a wide height range and high load resistance. They are manufactured in heights ranging from 50 to 190 mm. Stable furniture support is provided by the oversized foot surface whilst durable product material ensures its high static durability – 450 kg. The rectangular shape of the foot additionally strengthens the whole structure of the furniture, which means that even at maximum load, the adjustment of leg height is facilitated. Plinth clips are also available.

CHARACTERISTICS

► Application	Base of furniture
► Construction	Resistant material
► Regulation	Manual, screw/twist
► Max. load	450 kg
► Available heights	3 versions with ranges from/to: 50-65, 85-120, 122-190 mm
► Fixing the plinth	Universal plinth II clip

USAGE

- Carcass furniture, base cabinets with plinths





Adjustable furniture leg h = 50-65 mm




CODE	LOAD (kg)	MATERIAL	COLOUR	HEIGHT (mm)	COLLECTIVE PACKAGING	PRICED PER
222934-SV	450	PLASTIC	BLACK	50-65	100	item

 Elements sold individually

Adjustable furniture leg h = 85-120 mm



CODE	LOAD (kg)	MATERIAL	COLOUR	HEIGHT (mm)	COLLECTIVE PACKAGING	PRICED PER
222935-SV	450	PLASTIC	BLACK	85-120	100	item

 Elements sold individually

Adjustable furniture leg h = 122-190 mm




CODE	LOAD (kg)	MATERIAL	COLOUR	HEIGHT (mm)	COLLECTIVE PACKAGING	PRICED PER
222936-SV	450	PLASTIC	BLACK	122-190	100	item

 Elements sold individually

Universal plinth clip II



CODE	MATERIAL	COLOUR	COLLECTIVE PACKAGING	PRICED PER
222938	PLASTIC	BLACK	2000	item

 Elements sold individually

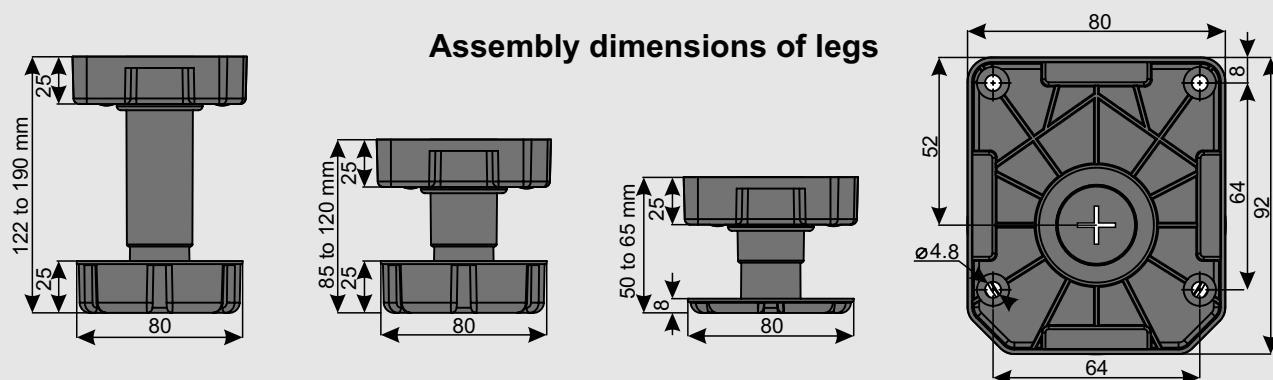


HEAVY DUTY

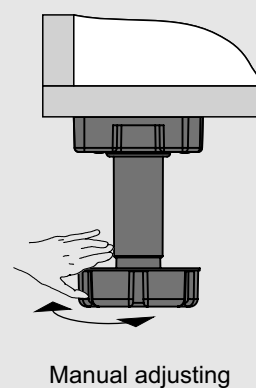
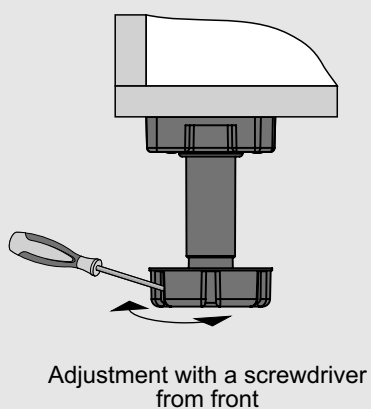
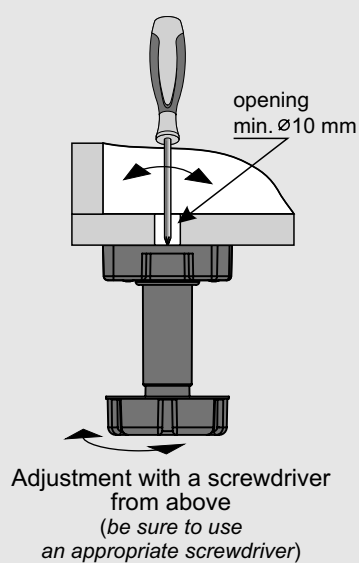
FURNITURE LEGS

Assembly instructions

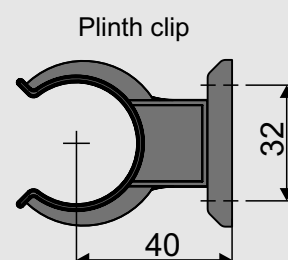
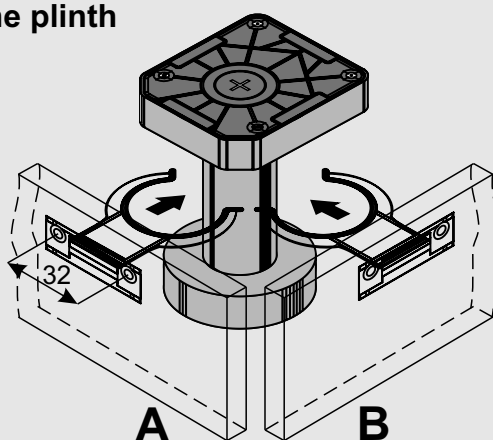
Assembly dimensions of legs



Foot height regulation



Installation of the plinth



The plinth can be attached both from the front (A) and from the side of the foot (B)
Thanks to this, the legs can also be used in "island" type projects

COMPONENTS

